

Product datasheet for **TA351553**

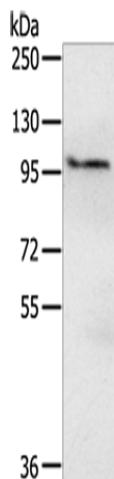
KIAA0090 (EMC1) Rabbit Polyclonal Antibody

Product data:

| | |
|-------------------------|---|
| Product Type: | Primary Antibodies |
| Applications: | WB |
| Recommended Dilution: | WB: 200-1000 WB positive control: HepG2 cells |
| Reactivity: | Human, Mouse |
| Host: | Rabbit |
| Isotype: | IgG |
| Clonality: | Polyclonal |
| Immunogen: | Synthetic peptide of human EMC1 |
| Formulation: | pH7.4 PBS, 0.05% NaN ₃ , 40% Glycerol |
| Concentration: | lot specific |
| Purification: | Antigen affinity purification |
| Conjugation: | Unconjugated |
| Storage: | Store at -20°C as received. |
| Stability: | Stable for 12 months from date of receipt. |
| Predicted Protein Size: | 112 kDa |
| Gene Name: | ER membrane protein complex subunit 1 |
| Database Link: | NP_001258356 Entrez Gene 23065 Human Q8N766 |
| Background: | This gene encodes a single-pass type I transmembrane protein, which is a subunit of the endoplasmic reticulum membrane protein complex (EMC). Multiple alternatively spliced transcript variants encoding different isoforms have been found for this gene. |
| Synonyms: | CAVIPMR; KIAA0090 |



[View online »](#)

Product images:


Gel: 6%SDS-PAGE

Lysate: 40 µg

Lane: HepG2 cells

Primary antibody: TA351553 (EMC1 Antibody) at dilution 1/200

Secondary antibody: Goat anti rabbit IgG at 1/8000 dilution

Exposure time: 15 seconds