

## Product datasheet for **TA351551S**

### PPM1F Rabbit Polyclonal Antibody

#### Product data:

Product Type:	Primary Antibodies
Applications:	IHC, WB
Recommended Dilution:	WB: 500-2000 WB positive control: K562 cells and human fetal liver tissue IHC: 50-200 Positive control: Human thyroid cancer Predicted cell location: Cytoplasm
Reactivity:	Human
Host:	Rabbit
Isotype:	IgG
Clonality:	Polyclonal
Immunogen:	Synthetic peptide of human PPM1F
Formulation:	pH7.4 PBS, 0.05% NaN <sub>3</sub> , 40% Glycerol
Purification:	Antigen affinity purification
Conjugation:	Unconjugated
Storage:	Store at -20°C as received.
Stability:	Stable for 12 months from date of receipt.
Predicted Protein Size:	50 kDa
Gene Name:	protein phosphatase, Mg <sup>2+</sup> /Mn <sup>2+</sup> dependent 1F
Database Link:	<a href="#">NP_055449</a> <a href="#">Entrez Gene 9647 Human</a> <a href="#">P49593</a>



[View online »](#)

**Background:**

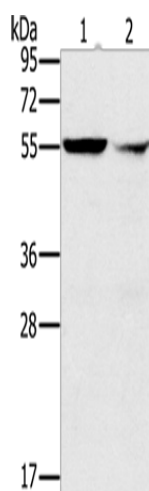
The protein encoded by this gene is a member of the PP2C family of Ser/Thr protein phosphatases. PP2C family members are known to be negative regulators of cell stress response pathways. This phosphatase can interact with Rho guanine nucleotide exchange factors (PIX), and thus block the effects of p21-activated kinase 1 (PAK), a protein kinase mediating biological effects downstream of Rho GTPases. Calcium/calmodulin-dependent protein kinase II gamma (CAMK2G/CAMK-II) is found to be one of the substrates of this phosphatase.

**Synonyms:**

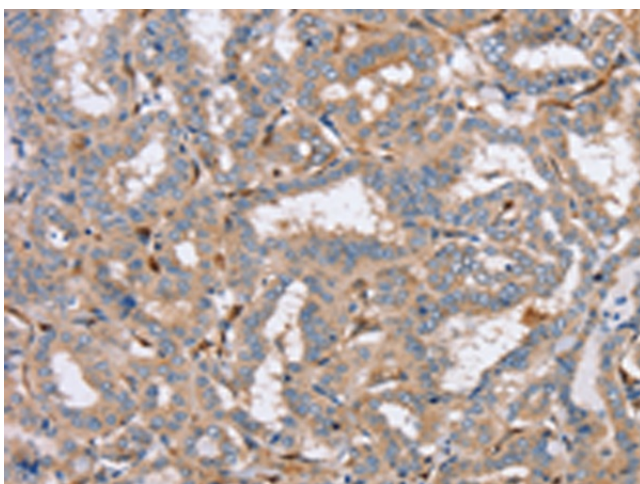
CAMKP; CaMKPase; FEM-2; hFEM-2; POPX2

**Protein Families:**

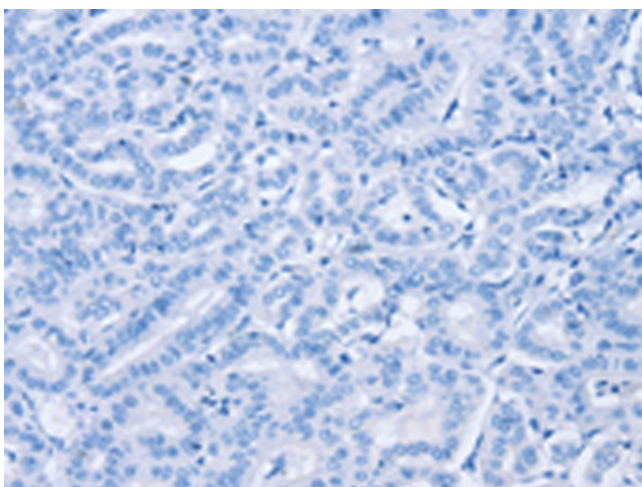
Druggable Genome, Phosphatase

**Product images:**

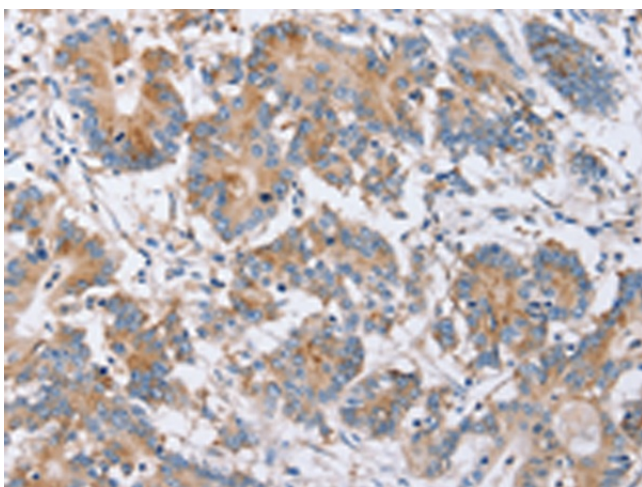
Gel: 8%SDS-PAGE  
Lysate: 40  $\mu$ g  
Lane 1-2: K562 cells  
human fetal liver tissue  
Primary antibody: [TA351551] (PPM1F Antibody)  
at dilution 1/200  
Secondary antibody: Goat anti rabbit IgG at  
1/8000 dilution  
Exposure time: 10 seconds



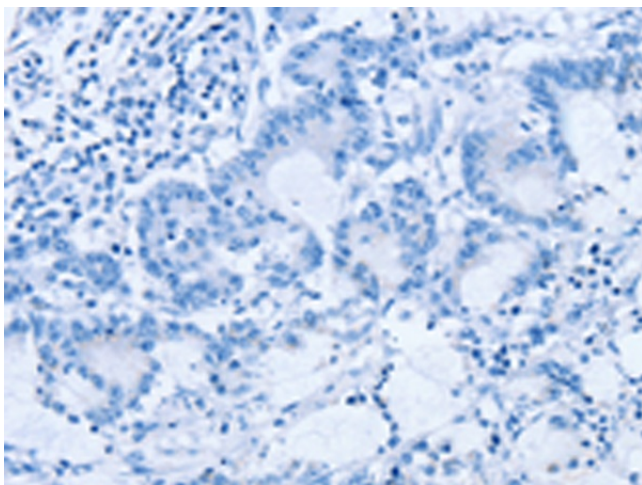
Immunohistochemistry of paraffin-embedded  
Human thyroid cancer tissue using [TA351551]  
(PPM1F Antibody) at dilution 1/40 (Original  
magnification:  $\times$ 200)



Immunohistochemistry of paraffin-embedded Human thyroid cancer tissue using [TA351551] (PPM1F Antibody) at dilution 1/40, treated with synthetic peptide. (Original magnification:  $\times 200$ )



Immunohistochemistry of paraffin-embedded Human colon cancer tissue using [TA351551] (PPM1F Antibody) at dilution 1/40 (Original magnification:  $\times 200$ )



Immunohistochemistry of paraffin-embedded Human colon cancer tissue using [TA351551] (PPM1F Antibody) at dilution 1/40, treated with synthetic peptide. (Original magnification:  $\times 200$ )