

Product datasheet for **TA351550**

PP1C gamma (PPP1CC) Rabbit Polyclonal Antibody

Product data:

Product Type:	Primary Antibodies
Applications:	IHC, WB
Recommended Dilution:	WB: 1000-5000 WB positive control: Jurkat, 293T and hela cells, mouse brain tissue and K562 cells IHC: 100-300 Positive control: Human lung cancer Predicted cell location: Cytoplasm or Nucleus
Reactivity:	Human, Mouse, Rat
Host:	Rabbit
Isotype:	IgG
Clonality:	Polyclonal
Immunogen:	Synthetic peptide of human PPP1CC
Formulation:	pH7.4 PBS, 0.05% NaN ₃ , 40% Glycerol
Concentration:	lot specific
Purification:	Antigen affinity purification
Conjugation:	Unconjugated
Storage:	Store at -20°C as received.
Stability:	Stable for 12 months from date of receipt.
Predicted Protein Size:	37 kDa
Gene Name:	protein phosphatase 1 catalytic subunit gamma
Database Link:	NP_002701 Entrez Gene 19047 Mouse Entrez Gene 24669 Rat Entrez Gene 5501 Human P36873



[View online »](#)

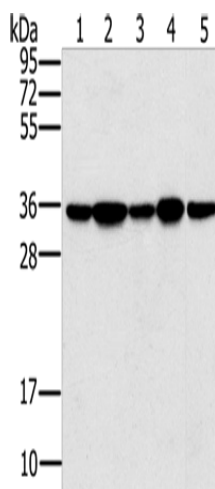
Background: The protein encoded by this gene belongs to the protein phosphatase family, PP1 subfamily. PP1 is an ubiquitous serine/threonine phosphatase that regulates many cellular processes, including cell division. It is expressed in mammalian cells as three closely related isoforms, alpha, beta/delta and gamma, which have distinct localization patterns. This gene encodes the gamma isozyme. Alternatively spliced transcript variants encoding different isoforms have been found for this gene.

Synonyms: PP-1G; PP1C; PPP1G

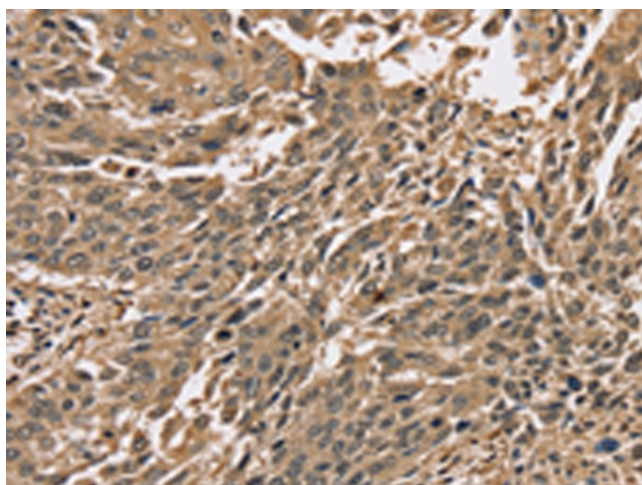
Protein Families: Druggable Genome, Phosphatase

Protein Pathways: Focal adhesion, Insulin signaling pathway, Long-term potentiation, Oocyte meiosis, Regulation of actin cytoskeleton, Vascular smooth muscle contraction

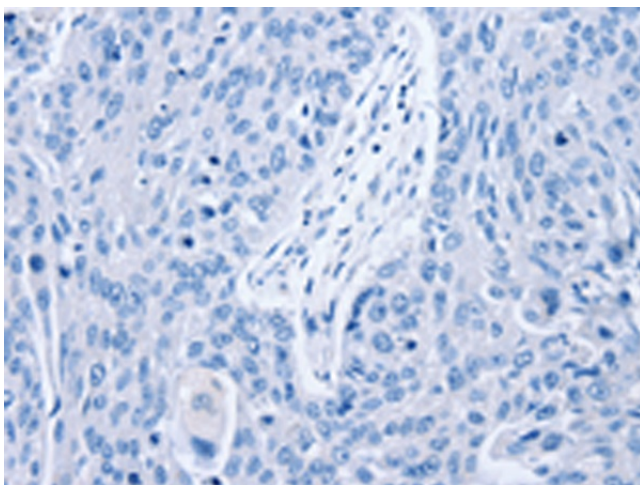
Product images:



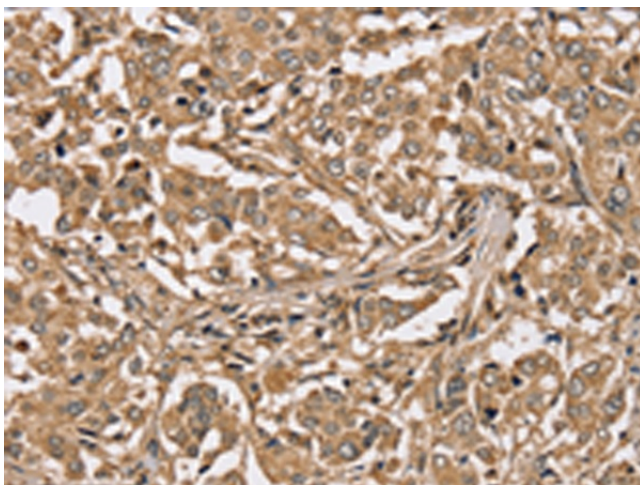
Gel: 10%SDS-PAGE
 Lysate: 40 µg
 Lane 1-5: Jurkat cells
 293T cells
 hela cells
 mouse brain tissue
 K562 cells
 Primary antibody: TA351550 (PPP1CC Antibody)
 at dilution 1/200
 Secondary antibody: Goat anti rabbit IgG at
 1/8000 dilution
 Exposure time: 1 second



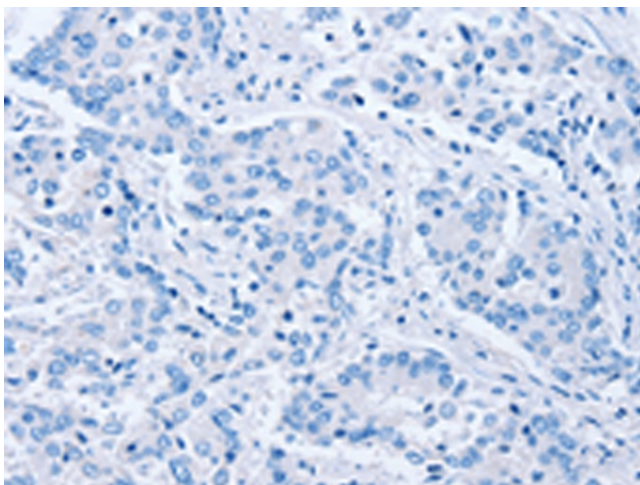
Immunohistochemistry of paraffin-embedded Human lung cancer tissue using TA351550 (PPP1CC Antibody) at dilution 1/40 (Original magnification: ×200)



Immunohistochemistry of paraffin-embedded Human lung cancer tissue using TA351550 (PPP1CC Antibody) at dilution 1/40, treated with synthetic peptide. (Original magnification: x200)



Immunohistochemistry of paraffin-embedded Human liver cancer tissue using TA351550 (PPP1CC Antibody) at dilution 1/40 (Original magnification: x200)



Immunohistochemistry of paraffin-embedded Human liver cancer tissue using TA351550 (PPP1CC Antibody) at dilution 1/40, treated with synthetic peptide. (Original magnification: x200)