

Product datasheet for **TA351549**

POU6F2 Rabbit Polyclonal Antibody

Product data:

Product Type:	Primary Antibodies
Applications:	IHC, WB
Recommended Dilution:	WB: 500-2000 WB positive control: Human placenta tissue lysate IHC: 50-100 Positive control: Human tonsil Predicted cell location: Nucleus
Reactivity:	Human, Mouse
Host:	Rabbit
Isotype:	IgG
Clonality:	Polyclonal
Immunogen:	Synthetic peptide of human POU6F2
Formulation:	pH7.4 PBS, 0.05% NaN ₃ , 40% Glycerol
Concentration:	lot specific
Purification:	Antigen affinity purification
Conjugation:	Unconjugated
Storage:	Store at -20°C as received.
Stability:	Stable for 12 months from date of receipt.
Predicted Protein Size:	73 kDa
Gene Name:	POU class 6 homeobox 2
Database Link:	NP_009183 Entrez Gene 218030 Mouse Entrez Gene 11281 Human P78424



[View online »](#)

Background:

This gene encodes a member of the POU protein family characterized by the presence of a bipartite DNA binding domain, consisting of a POU-specific domain and a homeodomain, separated by a variable polylinker. The DNA binding domain may bind to DNA as monomers or as homo- and/or heterodimers, in a sequence-specific manner. The POU family members are transcriptional regulators, many of which are known to control cell type-specific differentiation pathways. This gene is a tumor suppressor involved in Wilms tumor (WT) predisposition.

Synonyms:

RPF-1; WT5; WTSL

Protein Families:

Transcription Factors

Product images:

kDa

130 —

95 —

72 —

55 —

36 —

28 —

17 —



Gel: 8%SDS-PAGE

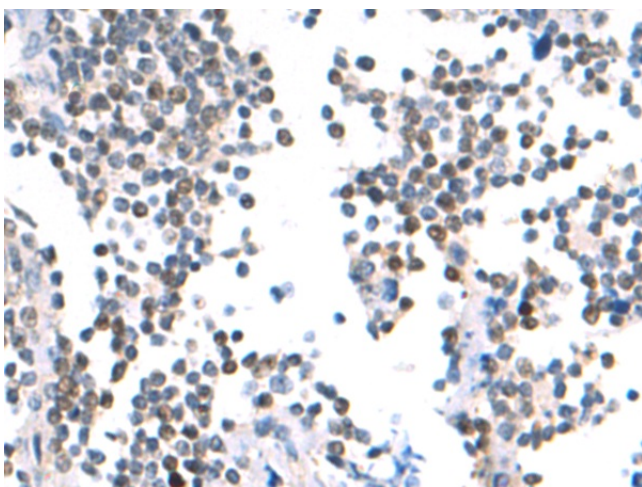
Lysate: 40 µg

Lane: Human placenta tissue lysate

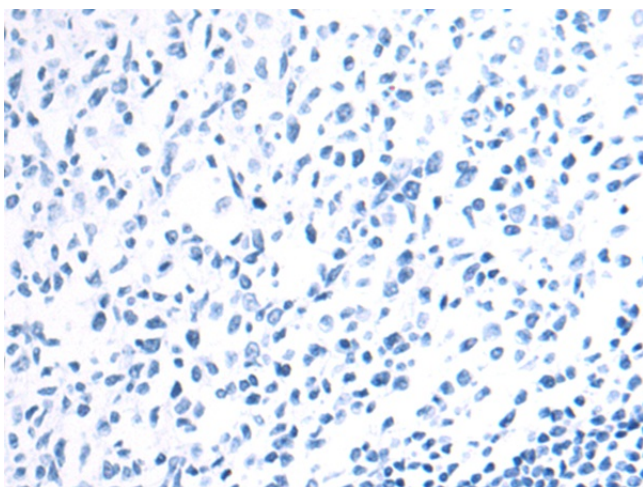
Primary antibody: TA351549 (POU6F2 Antibody)
at dilution 1/800

Secondary antibody: Goat anti rabbit IgG at
1/5000 dilution

Exposure time: 3 minutes



Immunohistochemistry of paraffin-embedded
Human tonsil tissue using TA351549 (POU6F2
Antibody) at dilution 1/50 (Original magnification:
×200)



Immunohistochemistry of paraffin-embedded Human tonsil tissue using TA351549 (POU6F2 Antibody) at dilution 1/50, treated with synthetic peptide. (Original magnification: x200)