

Product datasheet for **TA351548S**

PON1 Rabbit Polyclonal Antibody

Product data:

Product Type:	Primary Antibodies
Applications:	IHC, WB
Recommended Dilution:	WB: 1000-5000 WB positive control: Hela, skov3 and A549 cells, mouse liver and human ovarian cancer tissue IHC: 50-200 Positive control: Human tonsil Predicted cell location: Cytoplasm
Reactivity:	Human, Mouse, Rat
Host:	Rabbit
Isotype:	IgG
Clonality:	Polyclonal
Immunogen:	Synthetic peptide of human PON1
Formulation:	pH7.4 PBS, 0.05% NaN ₃ , 40% Glycerol
Purification:	Antigen affinity purification
Conjugation:	Unconjugated
Storage:	Store at -20°C as received.
Stability:	Stable for 12 months from date of receipt.
Predicted Protein Size:	40 kDa
Gene Name:	paraoxonase 1
Database Link:	NP_000437 Entrez Gene 84024 Rat Entrez Gene 5444 Human P27169
Background:	The enzyme encoded by this gene is an arylesterase that mainly hydrolyzes paroxon to produce p-nitrophenol. Paroxon is an organophosphorus anticholinesterase compound that is produced in vivo by oxidation of the insecticide parathion. Polymorphisms in this gene are a risk factor in coronary artery disease. The gene is found in a cluster of three related paraoxonase genes at 7q21.3.
Synonyms:	ESA; MVCD5; PON

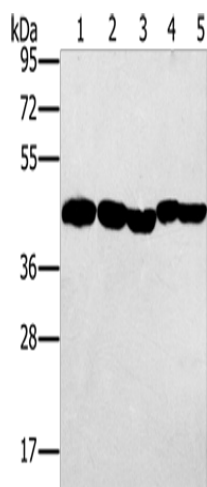


[View online »](#)

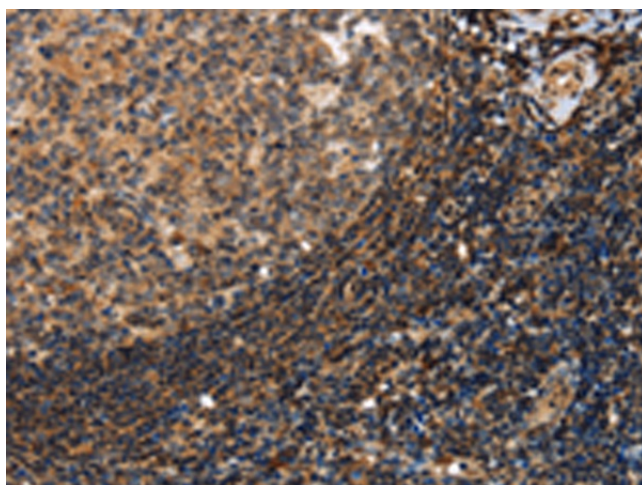
Protein Families: Druggable Genome, Secreted Protein

Protein Pathways: Metabolic pathways

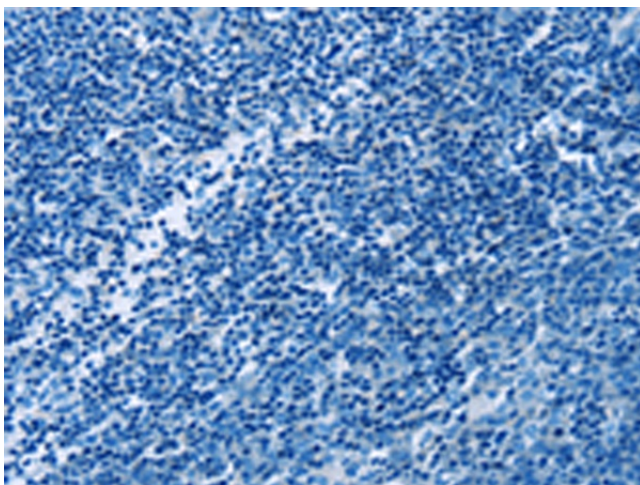
Product images:



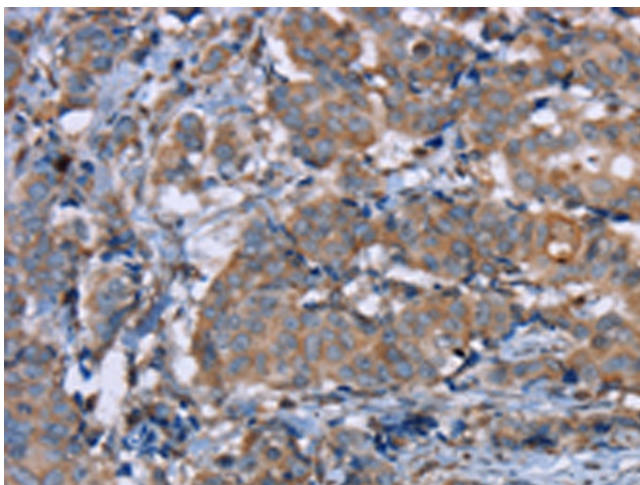
Gel: 8%SDS-PAGE
 Lysate: 40 µg
 Lane 1-5: HeLa cells
 skov3 cells
 A549 cells
 mouse liver tissue
 human ovarian cancer tissue
 Primary antibody: [TA351548] (PON1 Antibody) at dilution 1/500
 Secondary antibody: Goat anti rabbit IgG at 1/8000 dilution
 Exposure time: 20 seconds



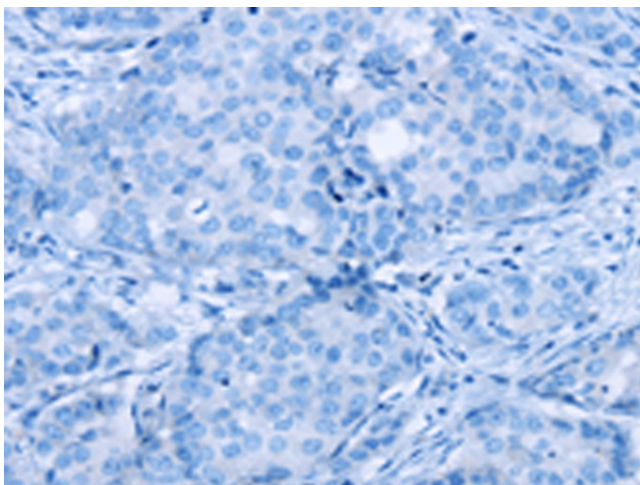
Immunohistochemistry of paraffin-embedded Human tonsil tissue using [TA351548] (PON1 Antibody) at dilution 1/40 (Original magnification: ×200)



Immunohistochemistry of paraffin-embedded Human tonsil tissue using [TA351548] (PON1 Antibody) at dilution 1/40, treated with synthetic peptide. (Original magnification: x200)



Immunohistochemistry of paraffin-embedded Human breast cancer tissue using [TA351548] (PON1 Antibody) at dilution 1/40 (Original magnification: x200)



Immunohistochemistry of paraffin-embedded Human breast cancer tissue using [TA351548] (PON1 Antibody) at dilution 1/40, treated with synthetic peptide. (Original magnification: x200)