

## Product datasheet for **TA351548**

### PON1 Rabbit Polyclonal Antibody

#### Product data:

Product Type:	Primary Antibodies
Applications:	IHC, WB
Recommended Dilution:	WB: 1000-5000 WB positive control: Hela, skov3 and A549 cells, mouse liver and human ovarian cancer tissue IHC: 50-200 Positive control: Human tonsil Predicted cell location: Cytoplasm
Reactivity:	Human, Mouse, Rat
Host:	Rabbit
Isotype:	IgG
Clonality:	Polyclonal
Immunogen:	Synthetic peptide of human PON1
Formulation:	pH7.4 PBS, 0.05% NaN <sub>3</sub> , 40% Glycerol
Concentration:	lot specific
Purification:	Antigen affinity purification
Conjugation:	Unconjugated
Storage:	Store at -20°C as received.
Stability:	Stable for 12 months from date of receipt.
Predicted Protein Size:	40 kDa
Gene Name:	paraoxonase 1
Database Link:	<a href="#">NP_000437</a> <a href="#">Entrez Gene 84024 Rat</a> <a href="#">Entrez Gene 5444 Human</a> <a href="#">P27169</a>

**Background:** The enzyme encoded by this gene is an arylesterase that mainly hydrolyzes paroxon to produce p-nitrophenol. Paroxon is an organophosphorus anticholinesterase compound that is produced in vivo by oxidation of the insecticide parathion. Polymorphisms in this gene are a risk factor in coronary artery disease. The gene is found in a cluster of three related paraoxonase genes at 7q21.3.



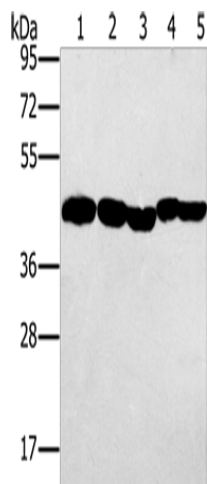
[View online »](#)

**Synonyms:** ESA; MVCD5; PON

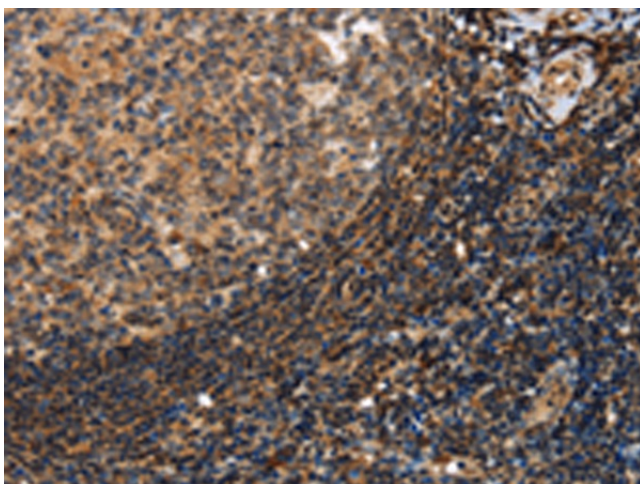
**Protein Families:** Druggable Genome, Secreted Protein

**Protein Pathways:** Metabolic pathways

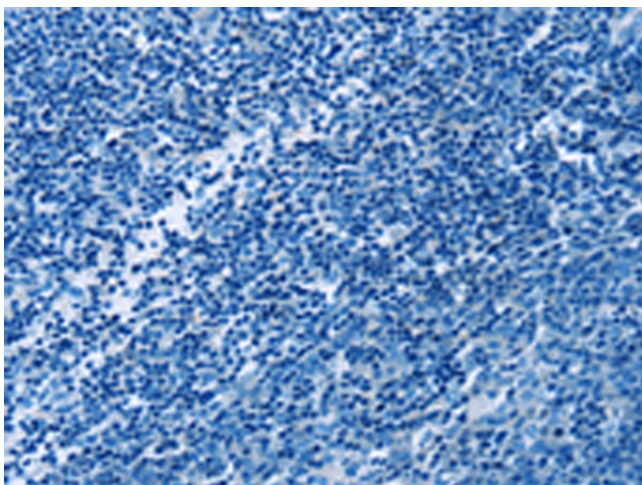
**Product images:**



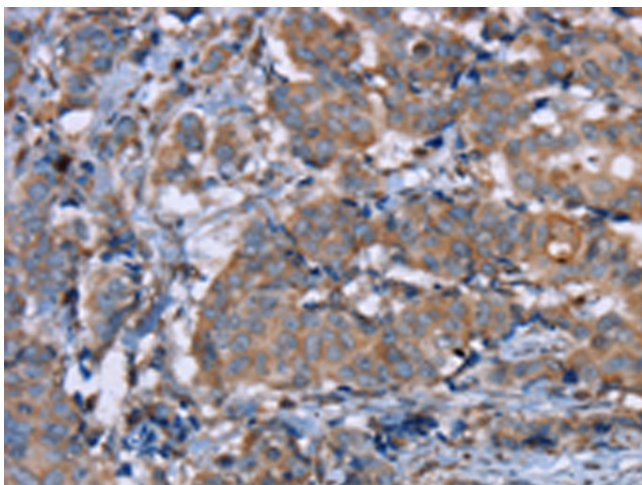
Gel: 8%SDS-PAGE  
 Lysate: 40 µg  
 Lane 1-5: HeLa cells  
 skov3 cells  
 A549 cells  
 mouse liver tissue  
 human ovarian cancer tissue  
 Primary antibody: TA351548 (PON1 Antibody) at dilution 1/500  
 Secondary antibody: Goat anti rabbit IgG at 1/8000 dilution  
 Exposure time: 20 seconds



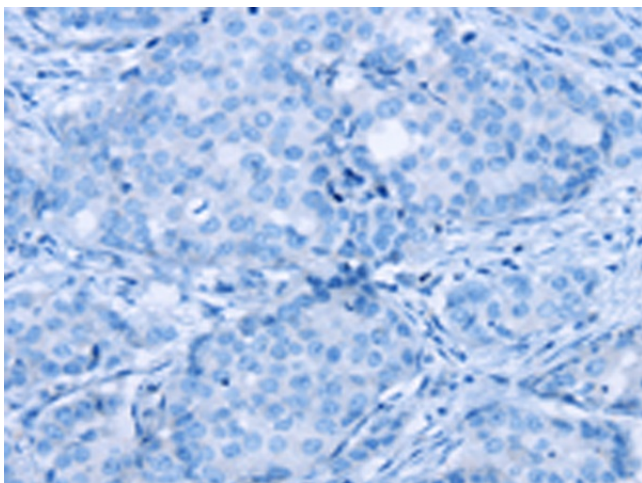
Immunohistochemistry of paraffin-embedded Human tonsil tissue using TA351548 (PON1 Antibody) at dilution 1/40 (Original magnification: ×200)



Immunohistochemistry of paraffin-embedded Human tonsil tissue using TA351548 (PON1 Antibody) at dilution 1/40, treated with synthetic peptide. (Original magnification:  $\times 200$ )



Immunohistochemistry of paraffin-embedded Human breast cancer tissue using TA351548 (PON1 Antibody) at dilution 1/40 (Original magnification:  $\times 200$ )



Immunohistochemistry of paraffin-embedded Human breast cancer tissue using TA351548 (PON1 Antibody) at dilution 1/40, treated with synthetic peptide. (Original magnification:  $\times 200$ )