

Product datasheet for **TA351546S**

PNPT1 Rabbit Polyclonal Antibody

Product data:

Product Type:	Primary Antibodies
Applications:	IHC, WB
Recommended Dilution:	WB: 200-1000 WB positive control: Jurkat, Hela and A431 cells, mouse liver tissue and 293T cells IHC: 50-200 Positive control: Human gastric cancer Predicted cell location: Cytoplasm
Reactivity:	Human, Mouse
Host:	Rabbit
Isotype:	IgG
Clonality:	Polyclonal
Immunogen:	Synthetic peptide of human PNPT1
Formulation:	pH7.4 PBS, 0.05% NaN ₃ , 40% Glycerol
Purification:	Antigen affinity purification
Conjugation:	Unconjugated
Storage:	Store at -20°C as received.
Stability:	Stable for 12 months from date of receipt.
Predicted Protein Size:	86 kDa
Gene Name:	polyribonucleotide nucleotidyltransferase 1
Database Link:	NP_149100 Entrez Gene 71701 Mouse Entrez Gene 87178 Human Q8TCS8



[View online »](#)

Background:

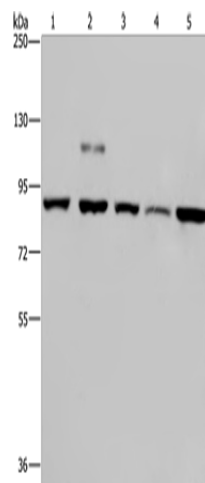
The protein encoded by this gene belongs to the evolutionary conserved polynucleotide phosphorylase family comprised of phosphate dependent 3'-to-5' exoribonucleases implicated in RNA processing and degradation. This enzyme is predominantly localized in the mitochondrial intermembrane space and is involved in import of RNA to mitochondria. Mutations in this gene have been associated with combined oxidative phosphorylation deficiency-13 and autosomal recessive nonsyndromic deafness-70. Related pseudogenes are found on chromosomes 3 and 7.

Synonyms:

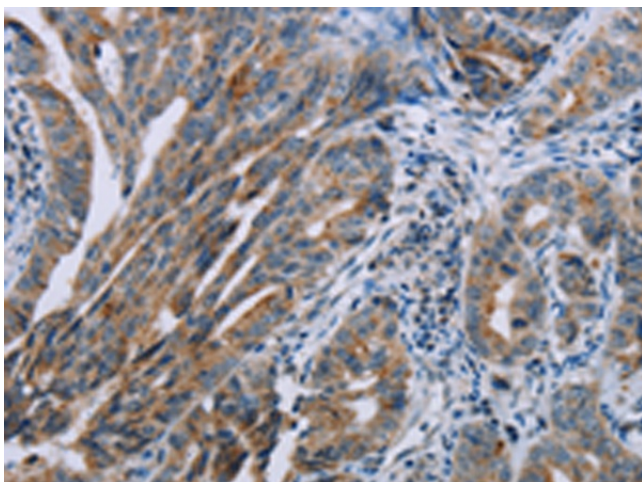
COXPD13; DFNB70; old-35; OLD35; PNPASE

Protein Pathways:

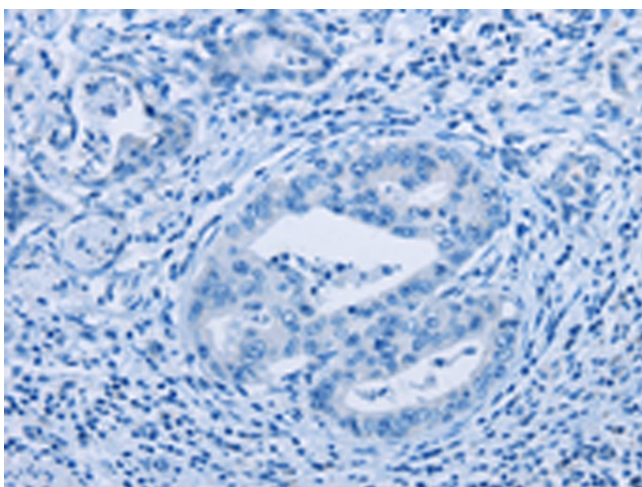
Purine metabolism, Pyrimidine metabolism, RNA degradation

Product images:

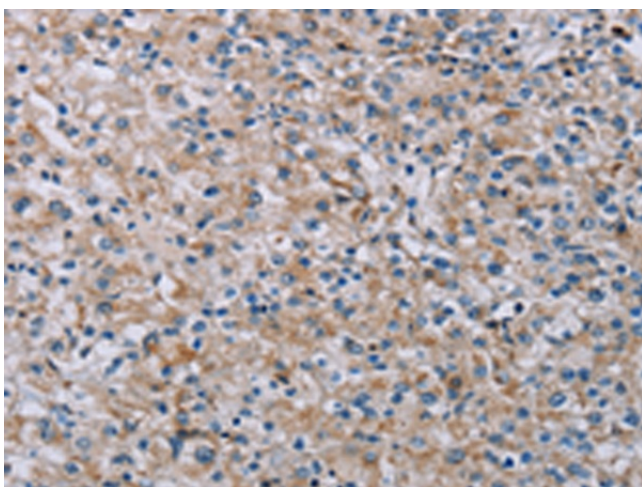
Gel: 6%SDS-PAGE
Lysate: 40 µg
Lane 1-5: Jurkat cells
Hela cells
A431 cells
mouse liver tissue
293T cells
Primary antibody: [TA351546] (PNPT1 Antibody)
at dilution 1/200
Secondary antibody: Goat anti rabbit IgG at
1/8000 dilution
Exposure time: 2 minutes



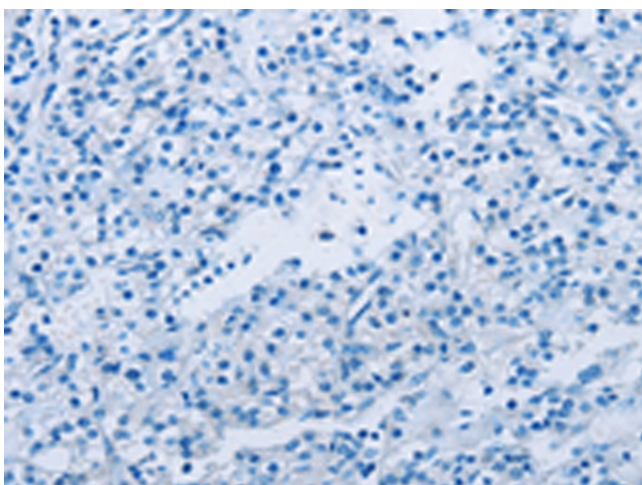
Immunohistochemistry of paraffin-embedded
Human gastric cancer tissue using [TA351546]
(PNPT1 Antibody) at dilution 1/40 (Original
magnification: x200)



Immunohistochemistry of paraffin-embedded Human gastric cancer tissue using [TA351546] (PNPT1 Antibody) at dilution 1/40, treated with synthetic peptide. (Original magnification: $\times 200$)



Immunohistochemistry of paraffin-embedded Human prostate cancer tissue using [TA351546] (PNPT1 Antibody) at dilution 1/40 (Original magnification: $\times 200$)



Immunohistochemistry of paraffin-embedded Human prostate cancer tissue using [TA351546] (PNPT1 Antibody) at dilution 1/40, treated with synthetic peptide. (Original magnification: $\times 200$)