

Product datasheet for **TA351544**

Plasminogen (PLG) Rabbit Polyclonal Antibody

Product data:

Product Type:	Primary Antibodies
Applications:	IHC, WB
Recommended Dilution:	WB: 200-1000 WB positive control: Human placenta tissue and serum IHC: 50-200 Positive control: Human prostate cancer Predicted cell location: Cytoplasm
Reactivity:	Human, Rat
Host:	Rabbit
Isotype:	IgG
Clonality:	Polyclonal
Immunogen:	Synthetic peptide of human PLG
Formulation:	pH7.4 PBS, 0.05% NaN ₃ , 40% Glycerol
Concentration:	lot specific
Purification:	Antigen affinity purification
Conjugation:	Unconjugated
Storage:	Store at -20°C as received.
Stability:	Stable for 12 months from date of receipt.
Predicted Protein Size:	91 kDa
Gene Name:	plasminogen
Database Link:	NP_000292 Entrez Gene 85253 Rat Entrez Gene 5340 Human P00747

Background: The protein encoded by this gene is a secreted blood zymogen that is activated by proteolysis and converted to plasmin and angiostatin. Plasmin dissolves fibrin in blood clots and is an important protease in many other cellular processes while angiostatin inhibits angiogenesis. Defects in this gene are likely a cause of thrombophilia and ligneous conjunctivitis. Two transcript variants encoding different isoforms have been found for this gene.



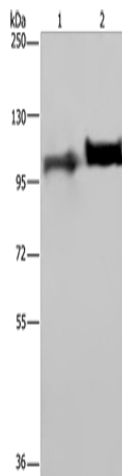
[View online »](#)

Synonyms: DKFZp779M0222

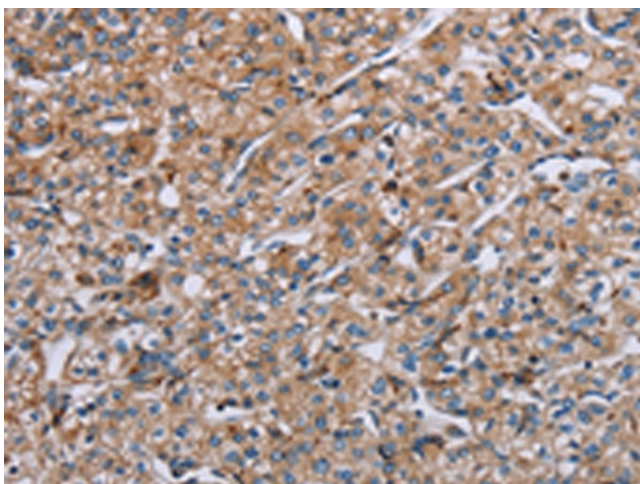
Protein Families: Druggable Genome, Protease, Secreted Protein

Protein Pathways: Complement and coagulation cascades, Neuroactive ligand-receptor interaction

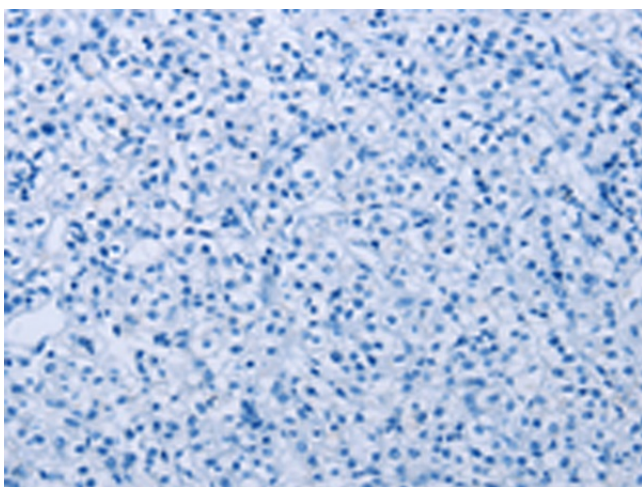
Product images:



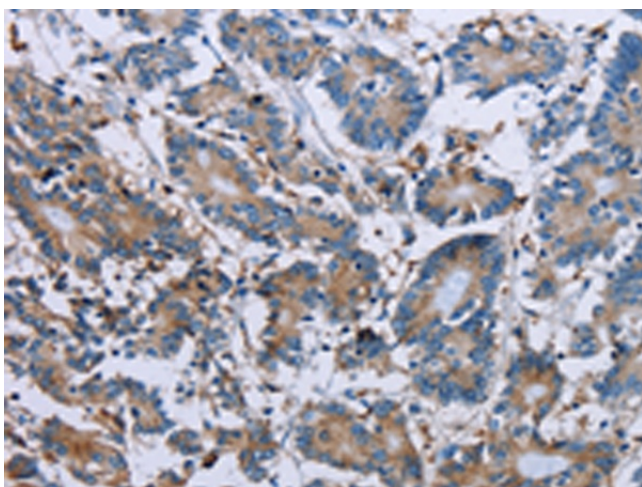
Gel: 6%SDS-PAGE
Lysate: 40 µg
Lane 1-2: Human placenta tissue
Human serum
Primary antibody: TA351544 (PLG Antibody) at dilution 1/200
Secondary antibody: Goat anti rabbit IgG at 1/8000 dilution
Exposure time: 2 minutes



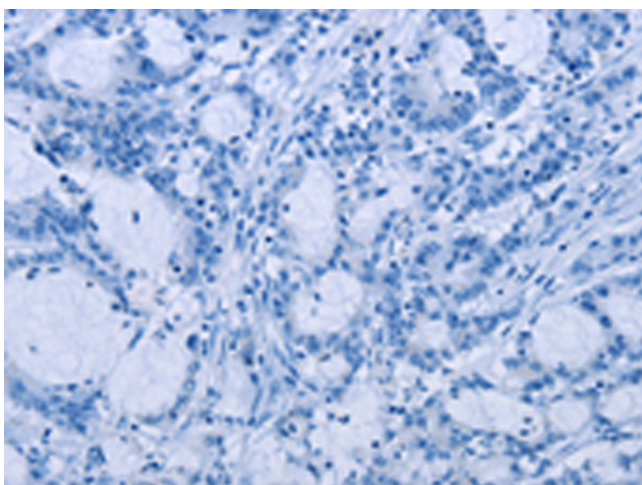
Immunohistochemistry of paraffin-embedded Human prostate cancer tissue using TA351544 (PLG Antibody) at dilution 1/40 (Original magnification: ×200)



Immunohistochemistry of paraffin-embedded Human prostate cancer tissue using TA351544 (PLG Antibody) at dilution 1/40, treated with synthetic peptide. (Original magnification: ×200)



Immunohistochemistry of paraffin-embedded Human colon cancer tissue using TA351544 (PLG Antibody) at dilution 1/40 (Original magnification: ×200)



Immunohistochemistry of paraffin-embedded Human colon cancer tissue using TA351544 (PLG Antibody) at dilution 1/40, treated with synthetic peptide. (Original magnification: ×200)