

Product datasheet for **TA351543**

Plexin D1 (PLXND1) Rabbit Polyclonal Antibody

Product data:

Product Type:	Primary Antibodies
Applications:	IHC, WB
Recommended Dilution:	WB: 200-1000 WB positive control: Hbmec cells IHC: 25-100 Positive control: Human prostate cancer Predicted cell location: Cytoplasm
Reactivity:	Human, Mouse
Host:	Rabbit
Isotype:	IgG
Clonality:	Polyclonal
Immunogen:	Synthetic peptide of human PLXND1
Formulation:	pH7.4 PBS, 0.05% NaN ₃ , 40% Glycerol
Concentration:	lot specific
Purification:	Antigen affinity purification
Conjugation:	Unconjugated
Storage:	Store at -20°C as received.
Stability:	Stable for 12 months from date of receipt.
Predicted Protein Size:	212 kDa
Gene Name:	plexin D1
Database Link:	NP_055918 Entrez Gene 67784 Mouse Entrez Gene 23129 Human Q9Y4D7



[View online »](#)

Background:

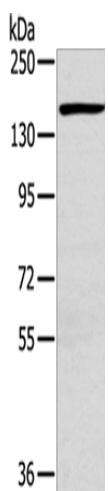
Cell surface receptor for SEMA4A and for class 3 semaphorins, such as SEMA3A, SEMA3C and SEMA3E. Plays an important role in cell-cell signaling, and in regulating the migration of a wide spectrum of cell types. Regulates the migration of thymocytes in the medulla. Regulates endothelial cell migration. Plays an important role in ensuring the specificity of synapse formation. Required for normal development of the heart and vasculature. By similarity. Mediates anti-angiogenic signaling in response to SEMA3E.

Synonyms:

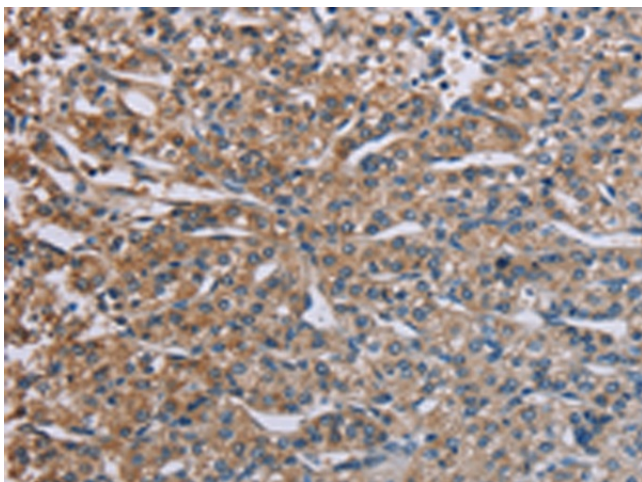
PLEXD1

Protein Families:

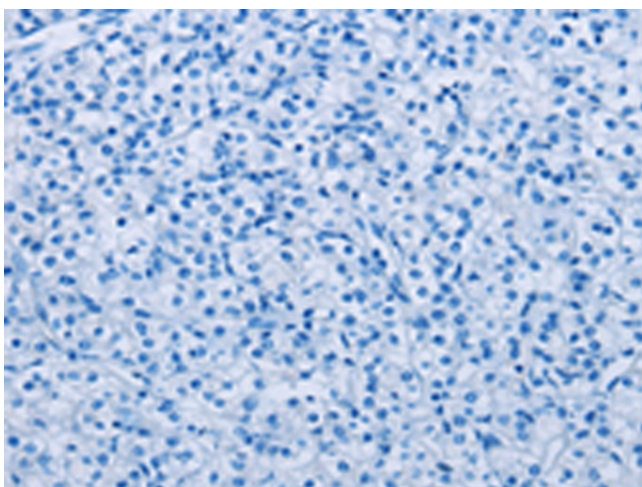
Druggable Genome, Transmembrane

Product images:


Gel: 6%SDS-PAGE
 Lysate: 40 μ g
 Lane: Hbmech cells
 Primary antibody: TA351543 (PLXND1 Antibody) at dilution 1/200
 Secondary antibody: Goat anti rabbit IgG at 1/8000 dilution
 Exposure time: 10 minutes



Immunohistochemistry of paraffin-embedded Human prostate cancer tissue using TA351543 (PLXND1 Antibody) at dilution 1/40 (Original magnification: \times 200)



Immunohistochemistry of paraffin-embedded Human prostate cancer tissue using TA351543 (PLXND1 Antibody) at dilution 1/40, treated with synthetic peptide. (Original magnification: ×200)