

## Product datasheet for **TA351542**

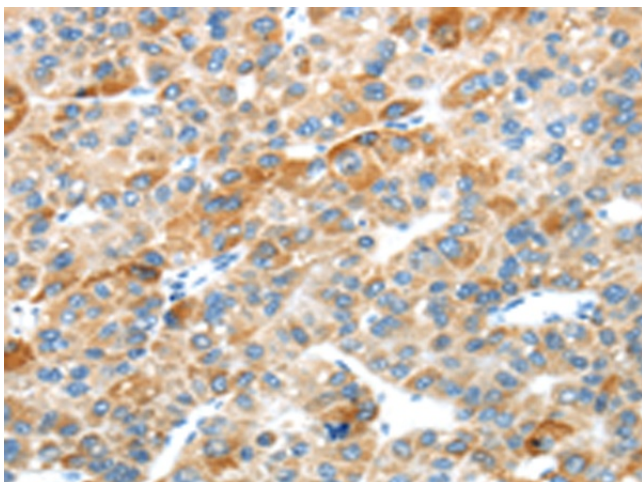
### Plexin B2 (PLXNB2) Rabbit Polyclonal Antibody

#### Product data:

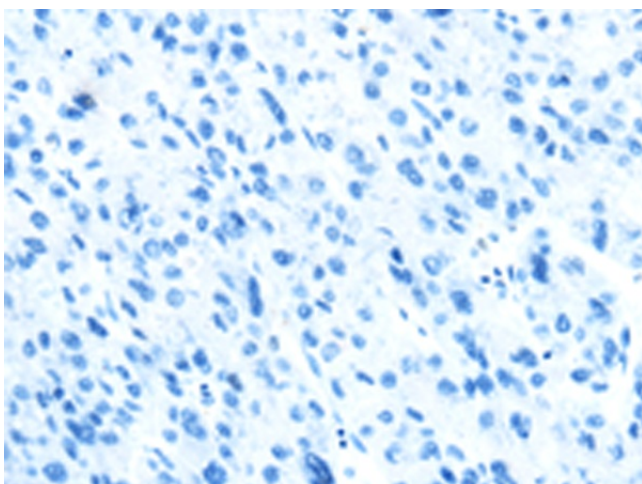
Product Type:	Primary Antibodies
Applications:	IHC
Recommended Dilution:	IHC: 25-100 Positive control: Human liver cancer Predicted cell location: Cell membrane
Reactivity:	Human, Mouse
Host:	Rabbit
Isotype:	IgG
Clonality:	Polyclonal
Immunogen:	Synthetic peptide of human PLXNB2
Formulation:	pH7.4 PBS, 0.05% NaN <sub>3</sub> , 40% Glycerol
Concentration:	lot specific
Purification:	Antigen affinity purification
Conjugation:	Unconjugated
Storage:	Store at -20°C as received.
Stability:	Stable for 12 months from date of receipt.
Gene Name:	plexin B2
Database Link:	<a href="#">NP_036533</a> <a href="#">Entrez Gene 23654 Human</a> <a href="#">O15031</a>
Background:	Members of the B class of plexins, such as PLXNB2 are transmembrane receptors that participate in axon guidance and cell migration in response to semaphorins (Perrot et al. (2002) [PubMed 12183458]).
Synonyms:	dj402G11.3; MM1; Nbla00445; PLEXB2
Protein Families:	Druggable Genome
Protein Pathways:	Axon guidance



[View online »](#)

**Product images:**

Immunohistochemistry of paraffin-embedded Human liver cancer tissue using TA351542 (PLXNB2 Antibody) at dilution 1/20 (Original magnification:  $\times 200$ )



Immunohistochemistry of paraffin-embedded Human liver cancer tissue using TA351542 (PLXNB2 Antibody) at dilution 1/20, treated with synthetic peptide. (Original magnification:  $\times 200$ )