

## Product datasheet for **TA351541S**

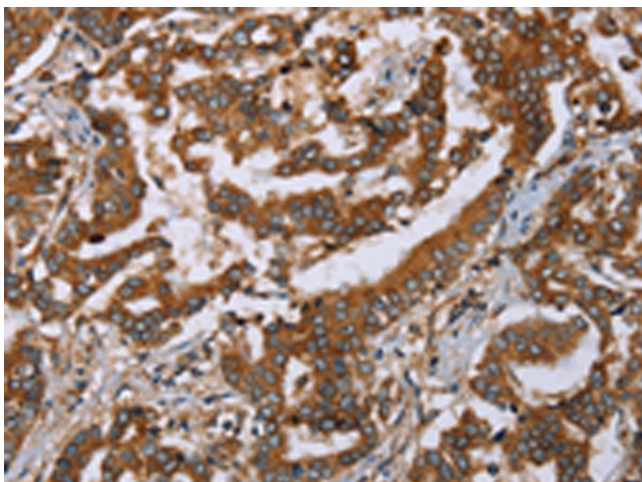
### Plexin B1 (PLXNB1) Rabbit Polyclonal Antibody

#### Product data:

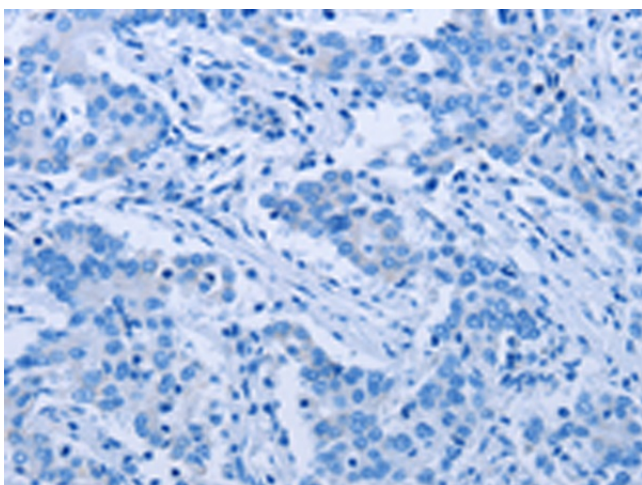
Product Type:	Primary Antibodies
Applications:	IHC
Recommended Dilution:	IHC: 50-200 Positive control: Human liver cancer Predicted cell location: Cytoplasm
Reactivity:	Human, Mouse
Host:	Rabbit
Isotype:	IgG
Clonality:	Polyclonal
Immunogen:	Synthetic peptide of human PLXNB1
Formulation:	pH7.4 PBS, 0.05% NaN <sub>3</sub> , 40% Glycerol
Purification:	Antigen affinity purification
Conjugation:	Unconjugated
Storage:	Store at -20°C as received.
Stability:	Stable for 12 months from date of receipt.
Gene Name:	plexin B1
Database Link:	<a href="#">NP_002664</a> <a href="#">Entrez Gene 235611 Mouse</a> <a href="#">Entrez Gene 5364 Human</a> <a href="#">O43157</a>
Background:	Plexin B1 is a protein of the plexin family that in humans is encoded by the PLXNB1 gene. Receptor for SEMA4D. Plays a role in RHOA activation and subsequent changes of the actin cytoskeleton. Plays a role in axon guidance, invasive growth and cell migration.
Synonyms:	PLEXIN-B1; PLXN5; SEP
Protein Families:	Druggable Genome
Protein Pathways:	Axon guidance



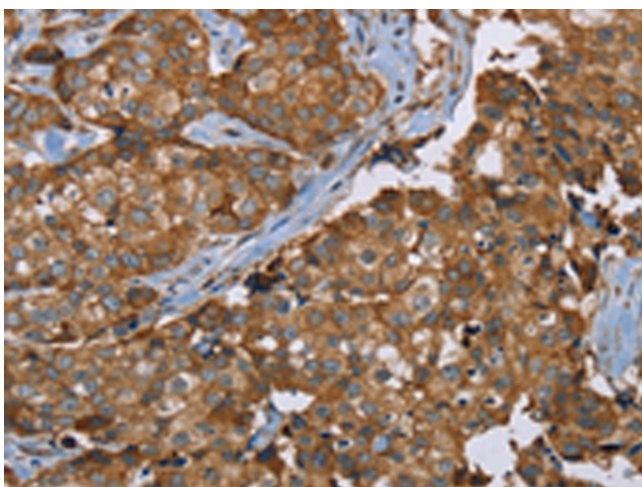
[View online »](#)

**Product images:**

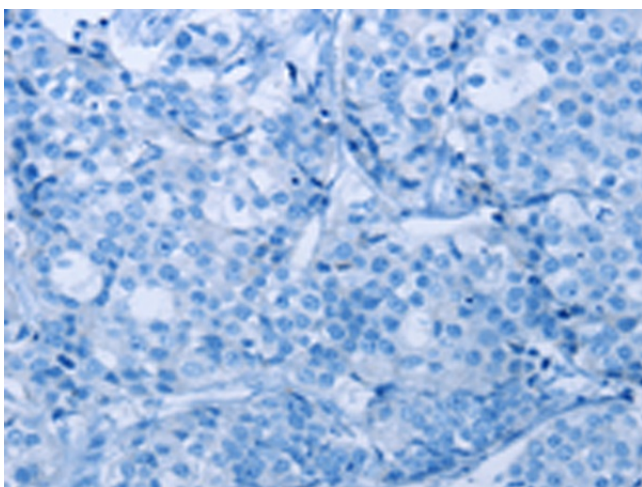
Immunohistochemistry of paraffin-embedded Human liver cancer tissue using [TA351541] (PLXNB1 Antibody) at dilution 1/50 (Original magnification: ×200)



Immunohistochemistry of paraffin-embedded Human liver cancer tissue using [TA351541] (PLXNB1 Antibody) at dilution 1/50, treated with synthetic peptide. (Original magnification: ×200)



Immunohistochemistry of paraffin-embedded Human breast cancer tissue using [TA351541] (PLXNB1 Antibody) at dilution 1/50 (Original magnification:  $\times 200$ )



Immunohistochemistry of paraffin-embedded Human breast cancer tissue using [TA351541] (PLXNB1 Antibody) at dilution 1/50, treated with synthetic peptide. (Original magnification:  $\times 200$ )