

## Product datasheet for **TA351537**

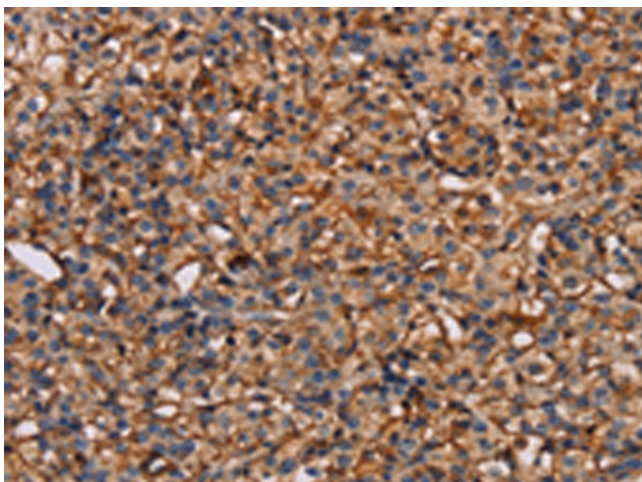
### Plexin A1 (PLXNA1) Rabbit Polyclonal Antibody

#### Product data:

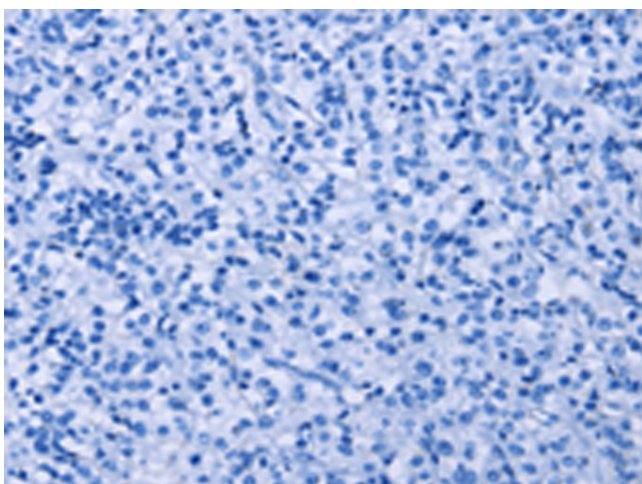
Product Type:	Primary Antibodies
Applications:	IHC
Recommended Dilution:	IHC: 50-200 Positive control: Human prostate cancer Predicted cell location: Cytoplasm
Reactivity:	Human, Mouse
Host:	Rabbit
Isotype:	IgG
Clonality:	Polyclonal
Immunogen:	Synthetic peptide of human PLXNA1
Formulation:	pH7.4 PBS, 0.05% NaN <sub>3</sub> , 40% Glycerol
Concentration:	lot specific
Purification:	Antigen affinity purification
Conjugation:	Unconjugated
Storage:	Store at -20°C as received.
Stability:	Stable for 12 months from date of receipt.
Gene Name:	plexin A1
Database Link:	<a href="#">NP_115618</a> <a href="#">Entrez Gene 18844 Mouse</a> <a href="#">Entrez Gene 5361 Human</a> <a href="#">Q9UIW2</a>
Background:	Plexins are a family of large, transmembrane receptors for multiple classes of semaphorins in vertebrates. Plexins are widely expressed, and regions of their extracellular domain are homologous to both scatter factor receptors and semaphorin domains.
Synonyms:	NOV; NOV; P; PLEXIN-A1; PLXN1
Protein Families:	Druggable Genome, Transmembrane
Protein Pathways:	Axon guidance



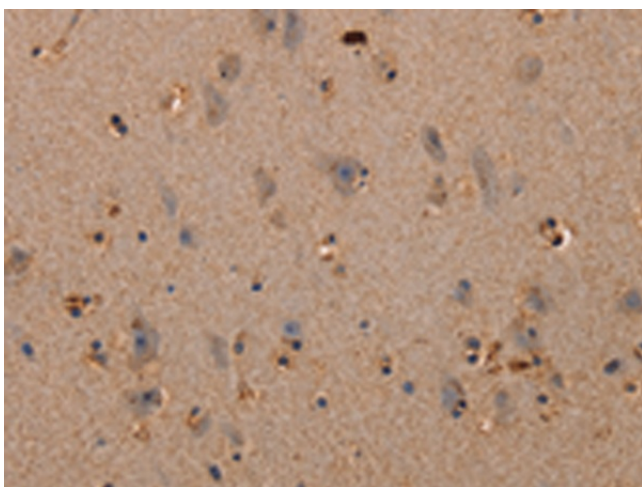
[View online »](#)

**Product images:**

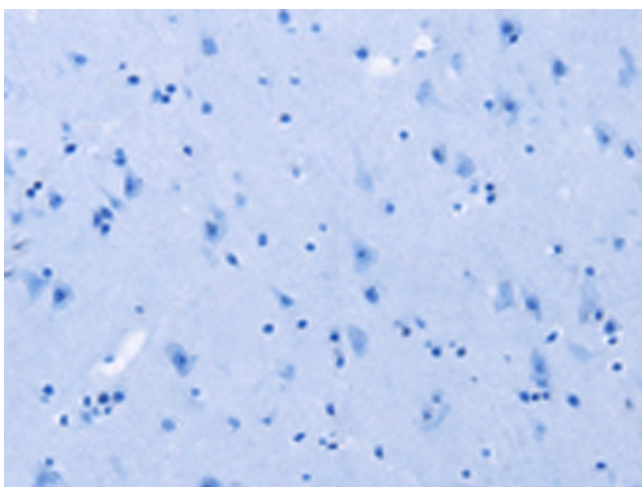
Immunohistochemistry of paraffin-embedded Human prostate cancer tissue using TA351537 (PLXNA1 Antibody) at dilution 1/30 (Original magnification:  $\times 200$ )



Immunohistochemistry of paraffin-embedded Human prostate cancer tissue using TA351537 (PLXNA1 Antibody) at dilution 1/30, treated with synthetic peptide. (Original magnification:  $\times 200$ )



Immunohistochemistry of paraffin-embedded Human brain tissue using TA351537 (PLXNA1 Antibody) at dilution 1/30 (Original magnification: ×200)



Immunohistochemistry of paraffin-embedded Human brain tissue using TA351537 (PLXNA1 Antibody) at dilution 1/30, treated with synthetic peptide. (Original magnification: ×200)