

Product datasheet for **TA351536**

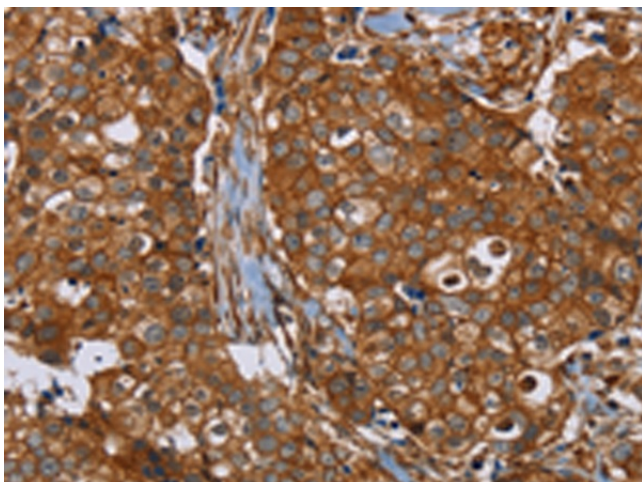
Plectin (PLEC) Rabbit Polyclonal Antibody

Product data:

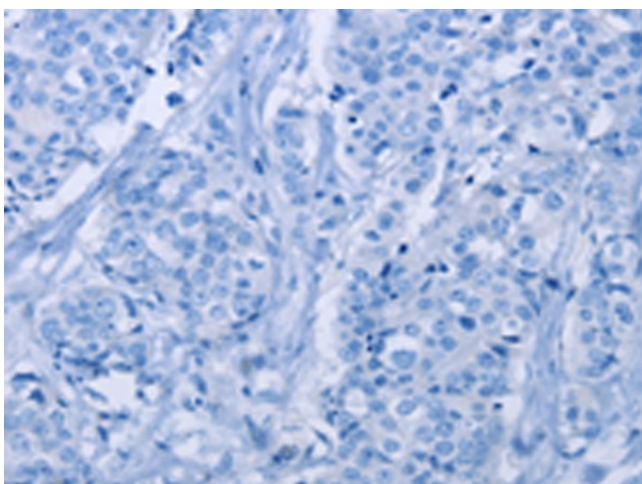
Product Type:	Primary Antibodies
Applications:	IHC
Recommended Dilution:	IHC: 50-200 Positive control: Human breast cancer Predicted cell location: Cytoplasm and Cell membrane
Reactivity:	Human, Mouse, Rat
Host:	Rabbit
Isotype:	IgG
Clonality:	Polyclonal
Immunogen:	Synthetic peptide of human PLEC
Formulation:	pH7.4 PBS, 0.05% NaN ₃ , 40% Glycerol
Concentration:	lot specific
Purification:	Antigen affinity purification
Conjugation:	Unconjugated
Storage:	Store at -20°C as received.
Stability:	Stable for 12 months from date of receipt.
Gene Name:	plectin
Database Link:	NP_000436 Entrez Gene 18810 Mouse Entrez Gene 64204 Rat Entrez Gene 5339 Human Q15149
Background:	Plectin is a prominent member of an important family of structurally and in part functionally related proteins, termed plakins or cytolinkers, that are capable of interlinking different elements of the cytoskeleton. Plakins, with their multi-domain structure and enormous size, not only play crucial roles in maintaining cell and tissue integrity and orchestrating dynamic changes in cytoarchitecture and cell shape, but also serve as scaffolding platforms for the assembly, positioning, and regulation of signaling complexes.
Synonyms:	EBS1; EBSO; HD1; LGMD2Q; PCN; PLEC1; PLEC1b; PLTN
Protein Families:	Druggable Genome



[View online »](#)

Product images:

Immunohistochemistry of paraffin-embedded Human breast cancer tissue using TA351536 (PLEC Antibody) at dilution 1/40 (Original magnification: $\times 200$)



Immunohistochemistry of paraffin-embedded Human breast cancer tissue using TA351536 (PLEC Antibody) at dilution 1/40, treated with synthetic peptide. (Original magnification: $\times 200$)