

Product datasheet for **TA351535**

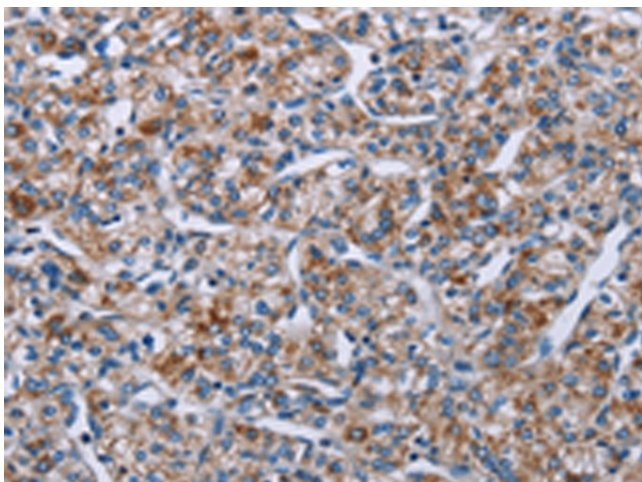
PLCL1 Rabbit Polyclonal Antibody

Product data:

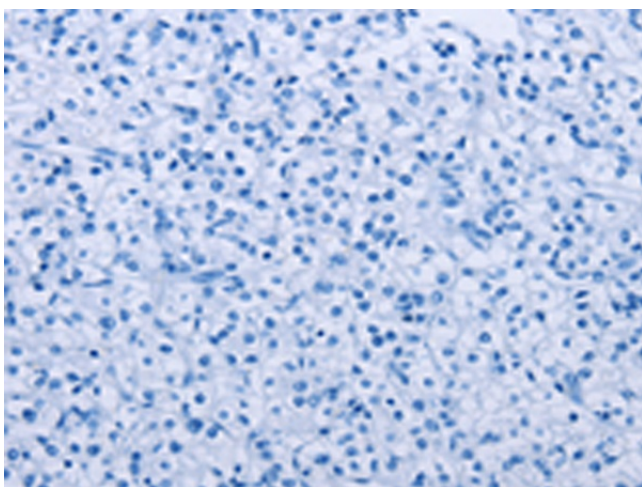
Product Type:	Primary Antibodies
Applications:	IHC
Recommended Dilution:	IHC: 25-100 Positive control: Human prostate cancer Predicted cell location: Cytoplasm
Reactivity:	Human
Host:	Rabbit
Isotype:	IgG
Clonality:	Polyclonal
Immunogen:	Synthetic peptide of human PLCL1
Formulation:	pH7.4 PBS, 0.05% NaN ₃ , 40% Glycerol
Concentration:	lot specific
Purification:	Antigen affinity purification
Conjugation:	Unconjugated
Storage:	Store at -20°C as received.
Stability:	Stable for 12 months from date of receipt.
Gene Name:	phospholipase C like 1
Database Link:	NP_006217 Entrez Gene 5334 Human Q15111
Background:	PLC-L (for PLC-deleted in lung carcinoma) is a PLC family member, the expression of which is decreased in small cell lung carcinomas. PLC-L is normally expressed in a variety of fetal and adult organs including the lung. PLC-L is thought to be involved in inositol phospholipid-based intracellular signaling cascade and aberrant expression of PLC-L may contribute to the genesis or progression of human lung carcinoma.
Synonyms:	PLCE; PLCL; PLDL1; PPP1R127; PRIP
Protein Families:	Druggable Genome



[View online »](#)

Product images:

Immunohistochemistry of paraffin-embedded Human prostate cancer tissue using TA351535 (PLCL1 Antibody) at dilution 1/40 (Original magnification: $\times 200$)



Immunohistochemistry of paraffin-embedded Human prostate cancer tissue using TA351535 (PLCL1 Antibody) at dilution 1/40, treated with synthetic peptide. (Original magnification: $\times 200$)