

## Product datasheet for **TA351534**

### Phospholipase C beta 3 (PLCB3) Rabbit Polyclonal Antibody

#### Product data:

Product Type:	Primary Antibodies
Applications:	IHC, WB
Recommended Dilution:	WB: 200-1000 WB positive control: PC3 and A431 cells, mouse lung tissue and Hela cells IHC: 50-200 Positive control: Human prostate cancer Predicted cell location: Cytoplasm
Reactivity:	Human, Mouse, Rat
Host:	Rabbit
Isotype:	IgG
Clonality:	Polyclonal
Immunogen:	Synthetic peptide of human PLCB3
Formulation:	pH7.4 PBS, 0.05% NaN <sub>3</sub> , 40% Glycerol
Concentration:	lot specific
Purification:	Antigen affinity purification
Conjugation:	Unconjugated
Storage:	Store at -20°C as received.
Stability:	Stable for 12 months from date of receipt.
Predicted Protein Size:	139 kDa
Gene Name:	phospholipase C beta 3
Database Link:	<a href="#">NP_000923</a> <a href="#">Entrez Gene 18797 Mouse</a> <a href="#">Entrez Gene 29322 Rat</a> <a href="#">Entrez Gene 5331 Human</a> <a href="#">Q01970</a>
Background:	This gene encodes a member of the phosphoinositide phospholipase C beta enzyme family that catalyze the production of the secondary messengers diacylglycerol and inositol 1,4,5-triphosphate from phosphatidylinositol in G-protein-linked receptor-mediated signal transduction. Alternative splicing results in multiple transcript variants.
Synonyms:	FLJ37084

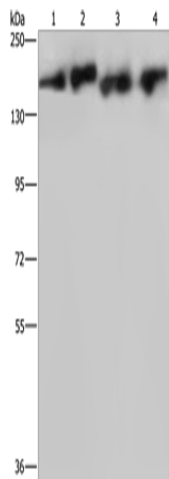


[View online »](#)

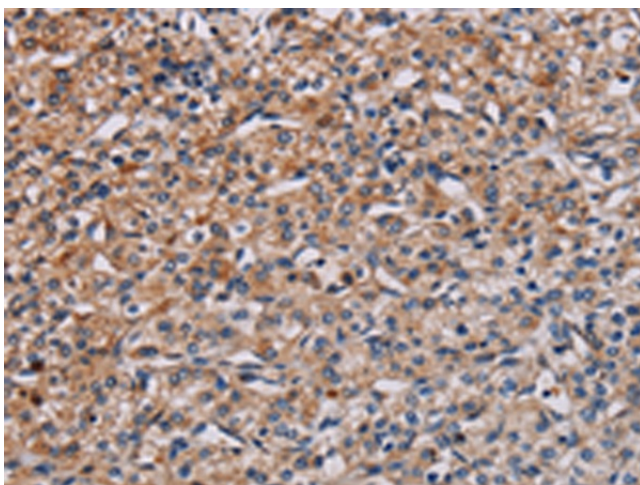
**Protein Families:** Druggable Genome

**Protein Pathways:** Alzheimer's disease, Calcium signaling pathway, Chemokine signaling pathway, Gap junction, GnRH signaling pathway, Huntington's disease, Inositol phosphate metabolism, Long-term depression, Long-term potentiation, Melanogenesis, Metabolic pathways, Phosphatidylinositol signaling system, Vascular smooth muscle contraction, Wnt signaling pathway

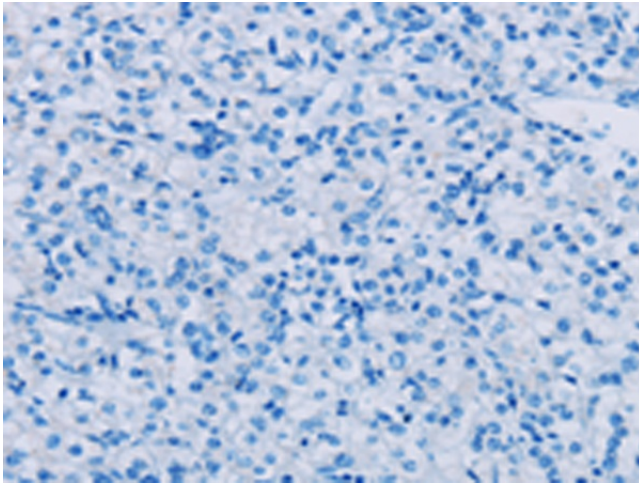
**Product images:**



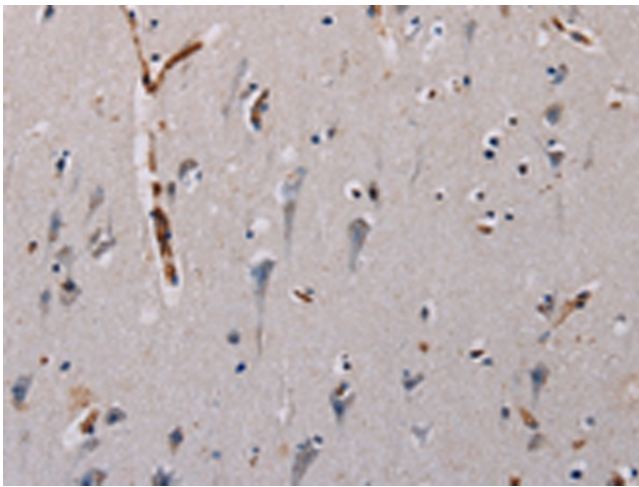
Gel: 6%SDS-PAGE  
Lysate: 40 µg  
Lane 1-4: PC3 cells  
A431 cells  
mouse lung tissue  
Hela cells  
Primary antibody: TA351534 (PLCB3 Antibody) at dilution 1/200  
Secondary antibody: Goat anti rabbit IgG at 1/8000 dilution  
Exposure time: 3 minutes



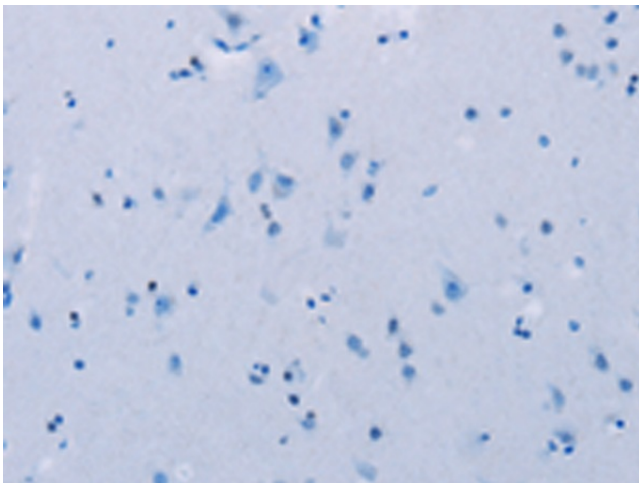
Immunohistochemistry of paraffin-embedded Human prostate cancer tissue using TA351534 (PLCB3 Antibody) at dilution 1/40 (Original magnification: ×200)



Immunohistochemistry of paraffin-embedded Human prostate cancer tissue using TA351534 (PLCB3 Antibody) at dilution 1/40, treated with synthetic peptide. (Original magnification: ×200)



Immunohistochemistry of paraffin-embedded Human brain tissue using TA351534 (PLCB3 Antibody) at dilution 1/40 (Original magnification: ×200)



Immunohistochemistry of paraffin-embedded Human brain tissue using TA351534 (PLCB3 Antibody) at dilution 1/40, treated with synthetic peptide. (Original magnification: ×200)