

## Product datasheet for **TA351527**

### PHKG2 Rabbit Polyclonal Antibody

#### Product data:

Product Type:	Primary Antibodies
Applications:	IHC, WB
Recommended Dilution:	WB: 200-1000 WB positive control: A549, Hela, HepG2 and 293T cells IHC: 25-100 Positive control: Human liver cancer Predicted cell location: Cytoplasm
Reactivity:	Human
Host:	Rabbit
Isotype:	IgG
Clonality:	Polyclonal
Immunogen:	Synthetic peptide of human PHKG2
Formulation:	pH7.4 PBS, 0.05% NaN <sub>3</sub> , 40% Glycerol
Concentration:	lot specific
Purification:	Antigen affinity purification
Conjugation:	Unconjugated
Storage:	Store at -20°C as received.
Stability:	Stable for 12 months from date of receipt.
Predicted Protein Size:	46 kDa
Gene Name:	phosphorylase kinase catalytic subunit gamma 2
Database Link:	<a href="#">NP_000285</a> <a href="#">Entrez Gene 5261 Human</a> <a href="#">P15735</a>



[View online »](#)

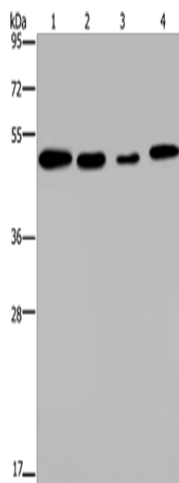
**Background:** Phosphorylase kinase is a polymer of 16 subunits, four each of alpha, beta, gamma and delta. The alpha subunit includes the skeletal muscle and hepatic isoforms, encoded by two different genes. The beta subunit is the same in both the muscle and hepatic isoforms, and encoded by one gene. The gamma subunit also includes the skeletal muscle and hepatic isoforms, and the hepatic isoform is encoded by this gene. The delta subunit is a calmodulin and can be encoded by three different genes.

**Synonyms:** GSD9C

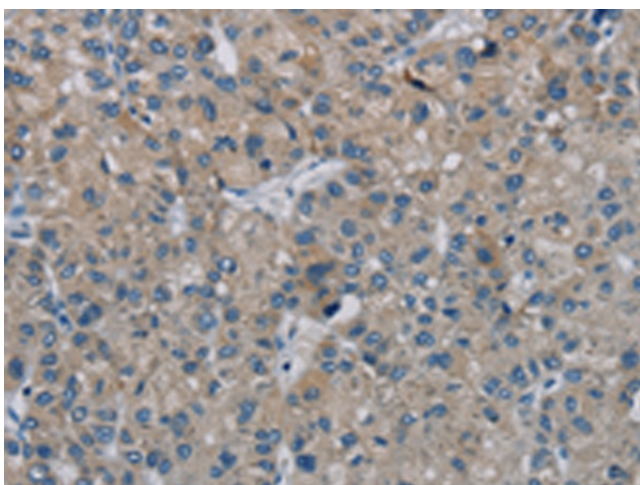
**Protein Families:** Druggable Genome, Protein Kinase

**Protein Pathways:** Calcium signaling pathway, Insulin signaling pathway

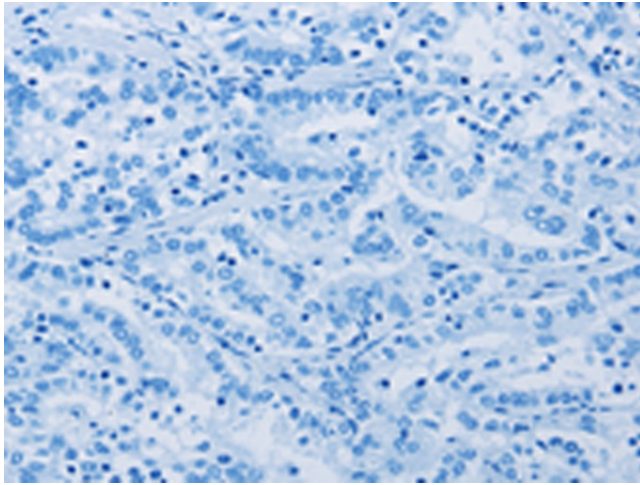
**Product images:**



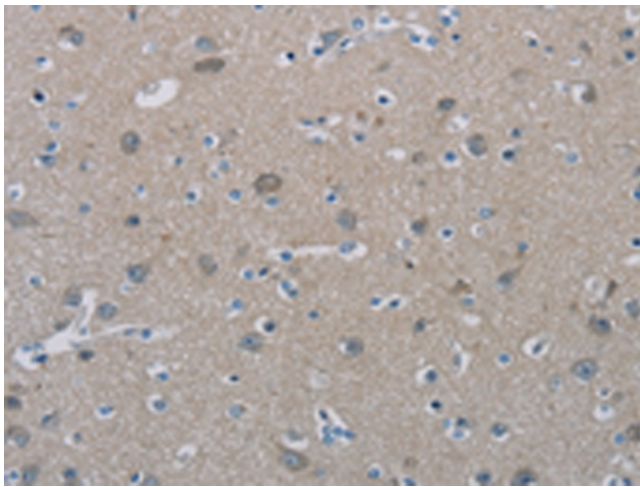
Gel: 8%SDS-PAGE  
 Lysate: 40 µg  
 Lane 1-4: A549 cells  
 HeLa cells  
 HepG2 cells  
 293T cells  
 Primary antibody: TA351527 (PHKG2 Antibody) at dilution 1/200  
 Secondary antibody: Goat anti rabbit IgG at 1/8000 dilution  
 Exposure time: 1 minute



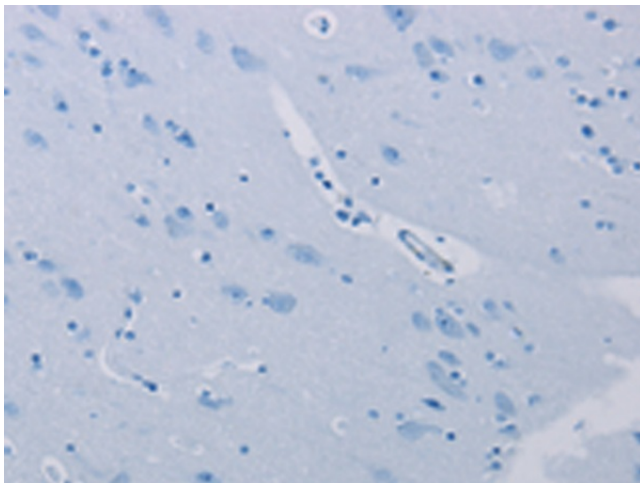
Immunohistochemistry of paraffin-embedded Human liver cancer tissue using TA351527 (PHKG2 Antibody) at dilution 1/20 (Original magnification: ×200)



Immunohistochemistry of paraffin-embedded Human liver cancer tissue using TA351527 (PHKG2 Antibody) at dilution 1/20, treated with synthetic peptide. (Original magnification: ×200)



Immunohistochemistry of paraffin-embedded Human brain tissue using TA351527 (PHKG2 Antibody) at dilution 1/20 (Original magnification: ×200)



Immunohistochemistry of paraffin-embedded Human brain tissue using TA351527 (PHKG2 Antibody) at dilution 1/20, treated with synthetic peptide. (Original magnification: ×200)