

Product datasheet for **TA351526S**

PHKG1 Rabbit Polyclonal Antibody

Product data:

Product Type:	Primary Antibodies
Applications:	IHC, WB
Recommended Dilution:	WB: 200-1000 WB positive control: Mouse skeletal muscle tissue IHC: 25-100 Positive control: Human liver cancer Predicted cell location: Cytoplasm
Reactivity:	Human, Mouse, Rat
Host:	Rabbit
Isotype:	IgG
Clonality:	Polyclonal
Immunogen:	Synthetic peptide of human PHKG1
Formulation:	pH7.4 PBS, 0.05% NaN ₃ , 40% Glycerol
Purification:	Antigen affinity purification
Conjugation:	Unconjugated
Storage:	Store at -20°C as received.
Stability:	Stable for 12 months from date of receipt.
Predicted Protein Size:	45 kDa
Gene Name:	phosphorylase kinase catalytic subunit gamma 1
Database Link:	NP_006204 Entrez Gene 18682 MouseEntrez Gene 29353 RatEntrez Gene 5260 Human Q16816

Background: This gene is a member of the Ser/Thr protein kinase family and encodes a protein with one protein kinase domain and two calmodulin-binding domains. This protein is the catalytic member of a 16 subunit protein kinase complex which contains equimolar ratios of 4 subunit types. The complex is a crucial glycogenolytic regulatory enzyme. This gene has two pseudogenes at chromosome 7q11.21 and one at chromosome 11p11.12. Multiple transcript variants encoding different isoforms have been found for this gene.



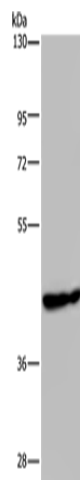
[View online »](#)

Synonyms: PHKG

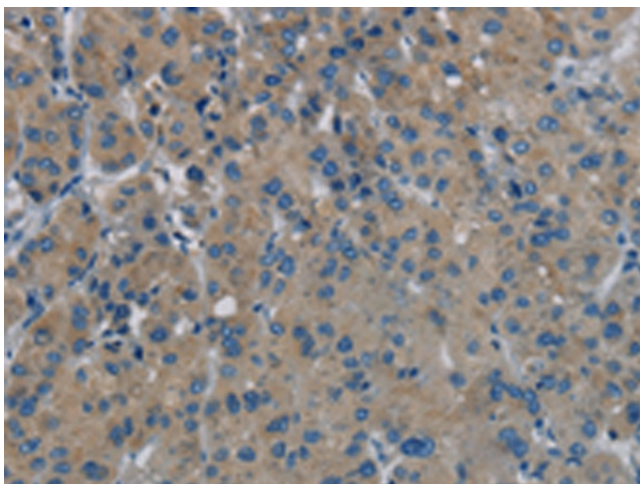
Protein Families: Druggable Genome, Protein Kinase

Protein Pathways: Calcium signaling pathway, Insulin signaling pathway

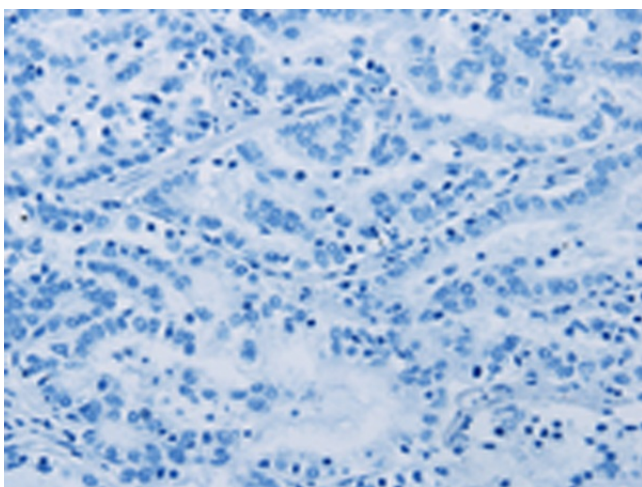
Product images:



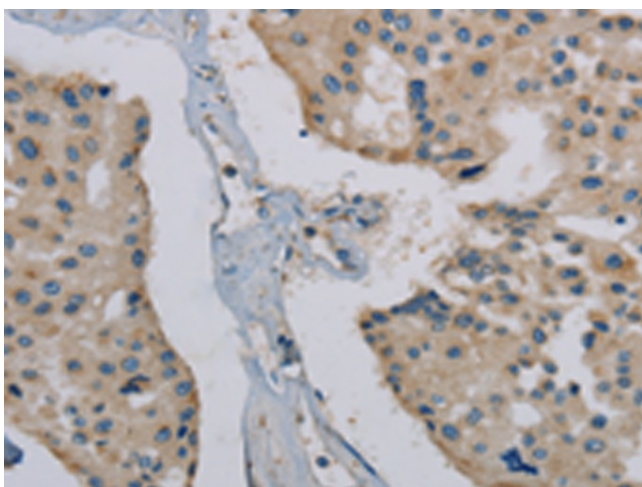
Gel: 8%SDS-PAGE
Lysate: 40 µg
Lane: Mouse skeletal muscle tissue
Primary antibody: [TA351526] (PHKG1 Antibody) at dilution 1/200
Secondary antibody: Goat anti rabbit IgG at 1/8000 dilution
Exposure time: 1 minute



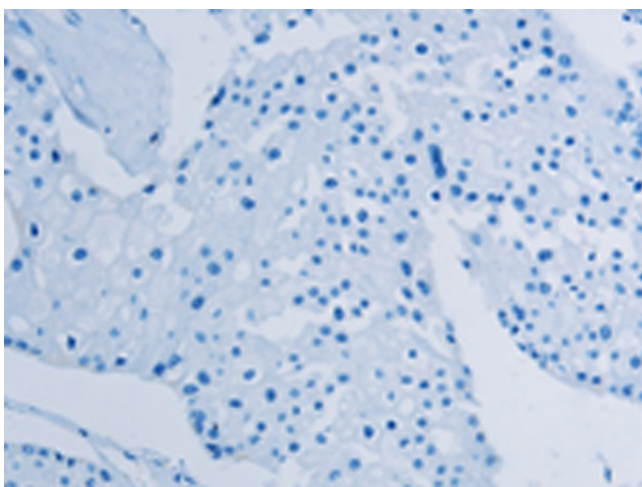
Immunohistochemistry of paraffin-embedded Human liver cancer tissue using [TA351526] (PHKG1 Antibody) at dilution 1/20 (Original magnification: ×200)



Immunohistochemistry of paraffin-embedded Human liver cancer tissue using [TA351526] (PHKG1 Antibody) at dilution 1/20, treated with synthetic peptide. (Original magnification: $\times 200$)



Immunohistochemistry of paraffin-embedded Human prostate cancer tissue using [TA351526] (PHKG1 Antibody) at dilution 1/20 (Original magnification: $\times 200$)



Immunohistochemistry of paraffin-embedded Human prostate cancer tissue using [TA351526] (PHKG1 Antibody) at dilution 1/20, treated with synthetic peptide. (Original magnification: $\times 200$)