

## Product datasheet for **TA351525S**

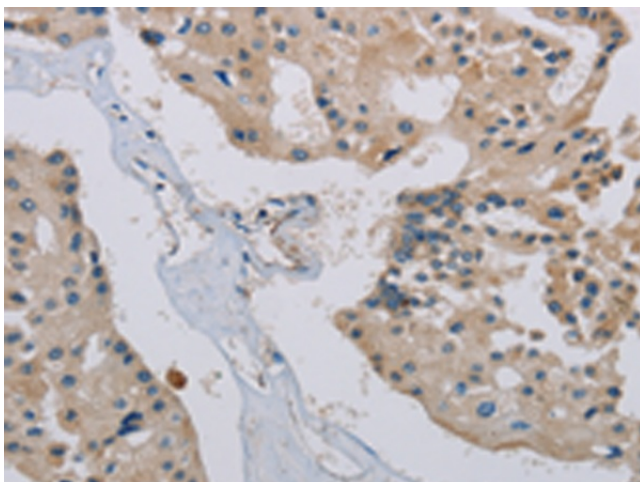
### PHKA2 Rabbit Polyclonal Antibody

#### Product data:

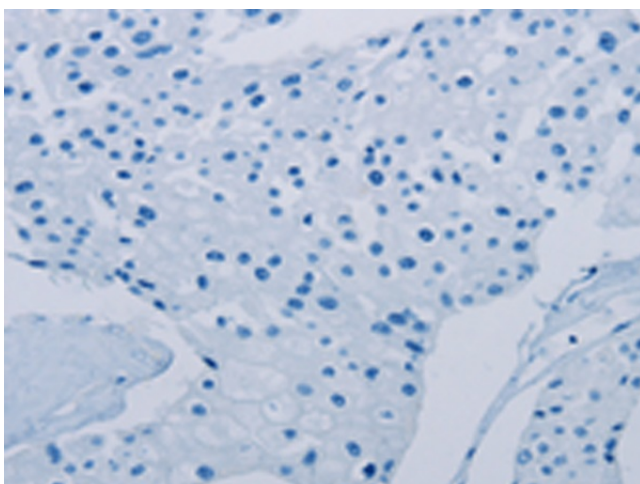
Product Type:	Primary Antibodies
Applications:	IHC
Recommended Dilution:	IHC: 25-100 Positive control: Human prostate cancer Predicted cell location: Cytoplasm
Reactivity:	Human
Host:	Rabbit
Isotype:	IgG
Clonality:	Polyclonal
Immunogen:	Synthetic peptide of human PHKA2
Formulation:	pH7.4 PBS, 0.05% NaN <sub>3</sub> , 40% Glycerol
Purification:	Antigen affinity purification
Conjugation:	Unconjugated
Storage:	Store at -20°C as received.
Stability:	Stable for 12 months from date of receipt.
Gene Name:	phosphorylase kinase regulatory subunit alpha 2
Database Link:	<a href="#">NP_000283</a> <a href="#">Entrez Gene 5256 Human</a> <a href="#">P46019</a>
Background:	Phosphorylase kinase is a polymer of 16 subunits, four each of alpha, beta, gamma and delta. The alpha subunit includes the skeletal muscle and hepatic isoforms, and the hepatic isoform is encoded by this gene. The beta subunit is the same in both the muscle and hepatic isoforms, and encoded by one gene. The gamma subunit also includes the skeletal muscle and hepatic isoforms, which are encoded by two different genes. The delta subunit is a calmodulin and can be encoded by three different genes.
Synonyms:	GSD9A; PHK; PYK; PYKL; XLG; XLG2
Protein Families:	Druggable Genome
Protein Pathways:	Calcium signaling pathway, Insulin signaling pathway



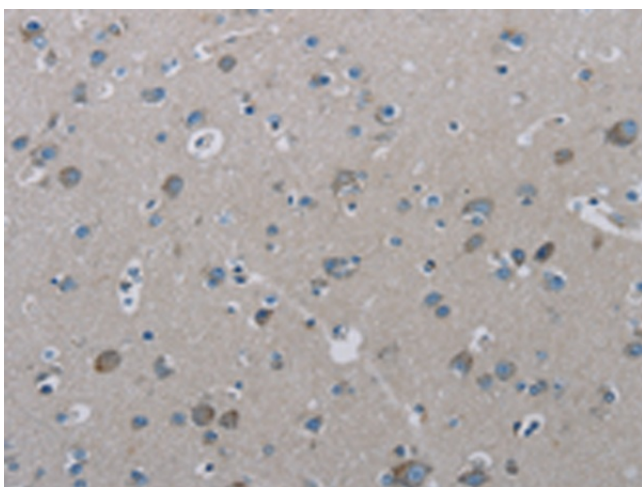
[View online »](#)

**Product images:**

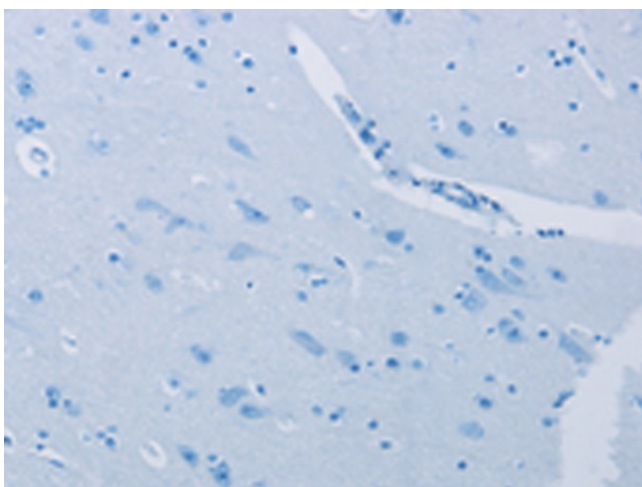
Immunohistochemistry of paraffin-embedded Human prostate cancer tissue using [TA351525] (PHKA2 Antibody) at dilution 1/30 (Original magnification:  $\times 200$ )



Immunohistochemistry of paraffin-embedded Human prostate cancer tissue using [TA351525] (PHKA2 Antibody) at dilution 1/30, treated with synthetic peptide. (Original magnification:  $\times 200$ )



Immunohistochemistry of paraffin-embedded Human brain tissue using [TA351525] (PHKA2 Antibody) at dilution 1/30 (Original magnification: ×200)



Immunohistochemistry of paraffin-embedded Human brain tissue using [TA351525] (PHKA2 Antibody) at dilution 1/30, treated with synthetic peptide. (Original magnification: ×200)