

## Product datasheet for **TA351522**

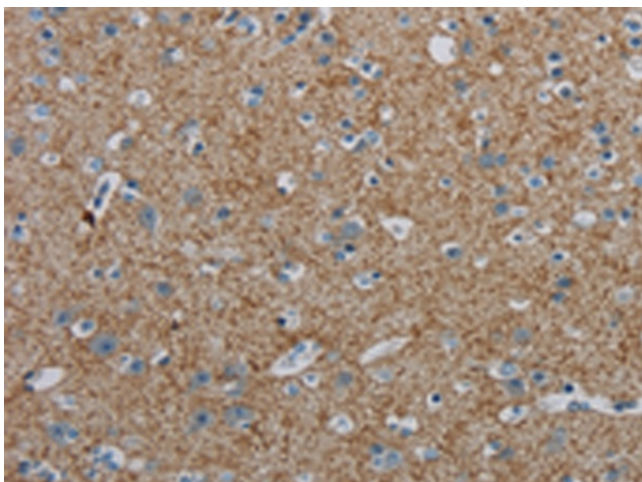
### **PGRPS (PGLYRP1) Rabbit Polyclonal Antibody**

#### **Product data:**

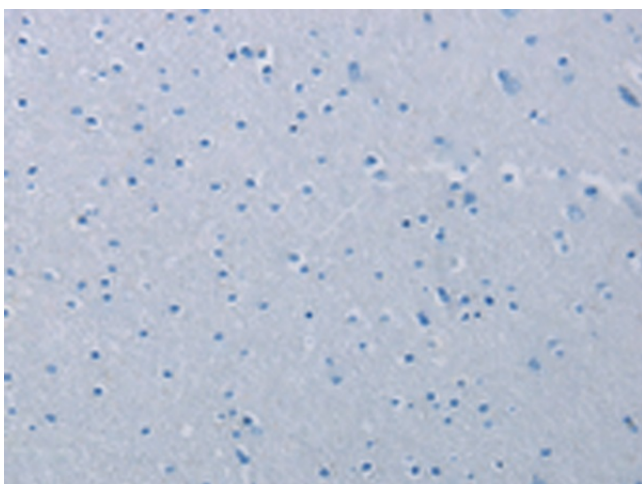
Product Type:	Primary Antibodies
Applications:	IHC
Recommended Dilution:	IHC: 25-100 Positive control: Human brain Predicted cell location: Cytoplasm
Reactivity:	Human, Mouse, Rat
Host:	Rabbit
Isotype:	IgG
Clonality:	Polyclonal
Immunogen:	Synthetic peptide of human PGLYRP1
Formulation:	pH7.4 PBS, 0.05% NaN <sub>3</sub> , 40% Glycerol
Concentration:	lot specific
Purification:	Antigen affinity purification
Conjugation:	Unconjugated
Storage:	Store at -20°C as received.
Stability:	Stable for 12 months from date of receipt.
Gene Name:	peptidoglycan recognition protein 1
Database Link:	<a href="#">NP_005082</a> <a href="#">Entrez Gene 21946 Mouse</a> <a href="#">Entrez Gene 8993 Human</a> <a href="#">O75594</a>
Background:	Peptidoglycan recognition protein is a protein that in humans is encoded by the PGLYRP1 gene. Pattern receptor that binds to murein peptidoglycans (PGN) of Gram-positive bacteria. Has bactericidal activity towards Gram-positive bacteria. May kill Gram-positive bacteria by interfering with peptidoglycan biosynthesis. Binds also to Gram-negative bacteria, and has bacteriostatic activity towards Gram-negative bacteria. Plays a role in innate immunity.
Synonyms:	PGLYRP; PGRP; PGRP-S; PGRPS; TAG7; TNFSF3L
Protein Families:	Druggable Genome, Secreted Protein



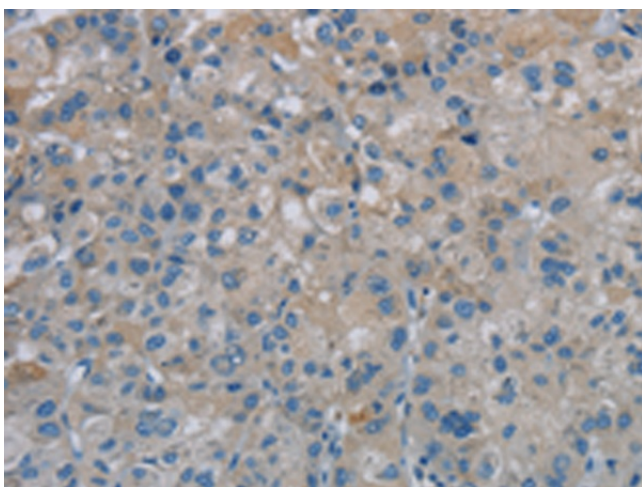
[View online »](#)

**Product images:**

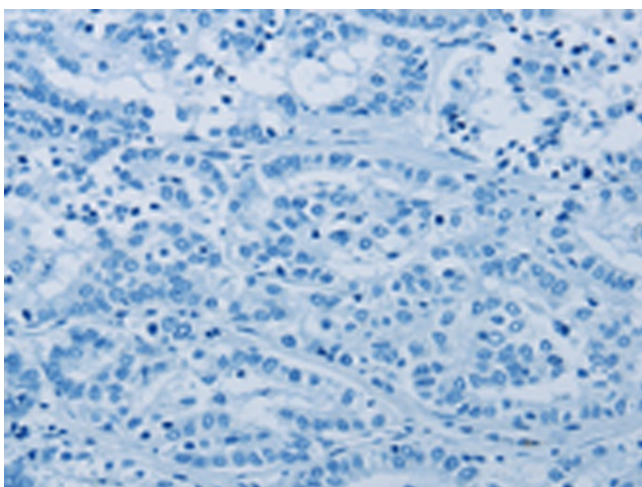
Immunohistochemistry of paraffin-embedded Human brain tissue using TA351522 (PGLYRP1 Antibody) at dilution 1/40 (Original magnification: ×200)



Immunohistochemistry of paraffin-embedded Human brain tissue using TA351522 (PGLYRP1 Antibody) at dilution 1/40, treated with synthetic peptide. (Original magnification: ×200)



Immunohistochemistry of paraffin-embedded Human liver cancer tissue using TA351522 (PGLYRP1 Antibody) at dilution 1/40 (Original magnification:  $\times 200$ )



Immunohistochemistry of paraffin-embedded Human liver cancer tissue using TA351522 (PGLYRP1 Antibody) at dilution 1/40, treated with synthetic peptide. (Original magnification:  $\times 200$ )