

Product datasheet for **TA351521S**

PGRPS (PGLYRP1) Rabbit Polyclonal Antibody

Product data:

| | |
|-------------------------|---------------------------------------------------------------------------------------------------------------------------------------|
| Product Type: | Primary Antibodies |
| Applications: | WB |
| Recommended Dilution: | WB: 200-1000 WB positive control: Hela and K562 cells, human fetal liver tissue |
| Reactivity: | Human, Mouse, Rat |
| Host: | Rabbit |
| Isotype: | IgG |
| Clonality: | Polyclonal |
| Immunogen: | Synthetic peptide of human PGLYRP1 |
| Formulation: | pH7.4 PBS, 0.05% NaN ₃ , 40% Glycerol |
| Purification: | Antigen affinity purification |
| Conjugation: | Unconjugated |
| Storage: | Store at -20°C as received. |
| Stability: | Stable for 12 months from date of receipt. |
| Predicted Protein Size: | 22 kDa |
| Gene Name: | peptidoglycan recognition protein 1 |
| Database Link: | NP_005082 Entrez Gene 21946 Mouse Entrez Gene 8993 Human O75594 |

Background: Peptidoglycan recognition proteins (PGRPs) are molecules that recognize peptidoglycan, a large component in bacterial cell walls. In insects, PGRPs activate antimicrobial pathways, and in mammals PGRPs function as antibacterial neutrophil proteins. PGRP-L halts bacterial growth by acting as an alanine amidase, an enzyme that hydrolyzes the amide bond of bacterial peptidoglycan. PGRP-I α and PGRP-I β are also members of the PGRP family that help recognize bacteria by binding to peptidoglycan and Gram-positive bacteria, but they do not have amidase activity. PGRP-S participates in intracellular killing of Gram-positive bacteria by stimulating two antimicrobial defense systems, the prophenoloxidase cascade and the antimicrobial peptides through Toll receptors.

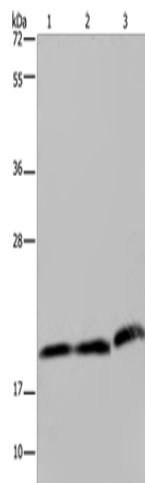


[View online »](#)

Synonyms: PGLYRP; PGRP; PGRP-S; PGRPS; TAG7; TNFSF3L

Protein Families: Druggable Genome, Secreted Protein

Product images:



Gel: 8%SDS-PAGE
Lysate: 40 μ g
Lane 1-3: HeLa cells
K562 cells
human fetal liver tissue
Primary antibody: [TA351521] (PGLYRP1
Antibody) at dilution 1/200
Secondary antibody: Goat anti rabbit IgG at
1/8000 dilution
Exposure time: 2 minutes