

Product datasheet for **TA351519**

PGC1 alpha (PPARGC1A) Rabbit Polyclonal Antibody

Product data:

Product Type:	Primary Antibodies
Applications:	WB
Recommended Dilution:	WB: 500-2000 WB positive control: Mouse brain tissue lysate
Reactivity:	Human, Mouse, Rat
Host:	Rabbit
Isotype:	IgG
Clonality:	Polyclonal
Immunogen:	Synthetic peptide of human PPARGC1A
Formulation:	pH7.4 PBS, 0.05% NaN ₃ , 40% Glycerol
Concentration:	lot specific
Purification:	Antigen affinity purification
Conjugation:	Unconjugated
Storage:	Store at -20°C as received.
Stability:	Stable for 12 months from date of receipt.
Predicted Protein Size:	91 kDa
Gene Name:	PPARG coactivator 1 alpha
Database Link:	NP_037393 Entrez Gene 19017 Mouse Entrez Gene 83516 Rat Entrez Gene 10891 Human Q9UBK2
Background:	The protein encoded by this gene is a transcriptional coactivator that regulates the genes involved in energy metabolism. This protein interacts with PPARgamma, which permits the interaction of this protein with multiple transcription factors. This protein can interact with, and regulate the activities of, cAMP response element binding protein (CREB) and nuclear respiratory factors (NRFs). It provides a direct link between external physiological stimuli and the regulation of mitochondrial biogenesis, and is a major factor that regulates muscle fiber type determination.
Synonyms:	LEM6; PGC-1(alpha); PGC-1alpha; PGC-1v; PGC1; PGC1A; PPARGC1

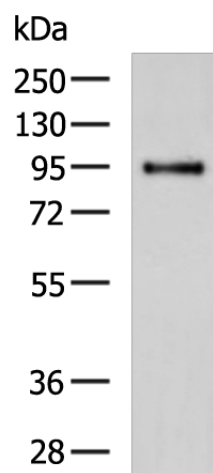


[View online »](#)

Protein Families: Druggable Genome, Transcription Factors

Protein Pathways: Adipocytokine signaling pathway, Huntington's disease, Insulin signaling pathway

Product images:



Gel: 8%SDS-PAGE

Lysate: 40 μ g

Lane: Mouse brain tissue lysate

Primary antibody: TA351519 (PPARGC1A Antibody) at dilution 1/800

Secondary antibody: Goat anti rabbit IgG at 1/5000 dilution

Exposure time: 1 minute