

## Product datasheet for **TA351517S**

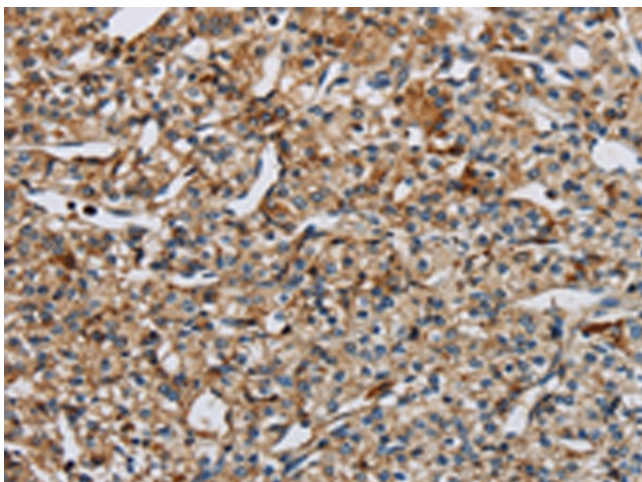
### PERK (EIF2AK3) Rabbit Polyclonal Antibody

#### Product data:

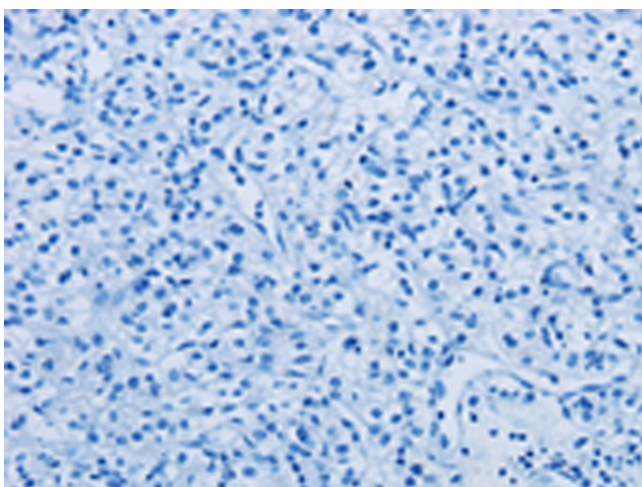
|                       |  |
|-----------------------|--|
| Product Type:         | Primary Antibodies   |
| Applications:         | IHC  |
| Recommended Dilution: | IHC: 50-200<br>Positive control: Human prostate cancer<br>Predicted cell location: Cytoplasm   |
| Reactivity:           | Human, Mouse, Rat  |
| Host:                 | Rabbit   |
| Isotype:              | IgG  |
| Clonality:            | Polyclonal   |
| Immunogen:            | Synthetic peptide of human EIF2AK3   |
| Formulation:          | pH7.4 PBS, 0.05% NaN <sub>3</sub> , 40% Glycerol   |
| Purification:         | Antigen affinity purification  |
| Conjugation:          | Unconjugated   |
| Storage:              | Store at -20°C as received.  |
| Stability:            | Stable for 12 months from date of receipt.   |
| Gene Name:            | eukaryotic translation initiation factor 2 alpha kinase 3  |
| Database Link:        | <a href="#">NP_004827</a><br><a href="#">Entrez Gene 13666 Mouse</a> <a href="#">Entrez Gene 29702 Rat</a> <a href="#">Entrez Gene 9451 Human</a><br><a href="#">Q9NZJ5</a>  |
| Background:           | The protein encoded by this gene phosphorylates the alpha subunit of eukaryotic translation-initiation factor 2 (EIF2), leading to its inactivation, and thus to a rapid reduction of translational initiation and repression of global protein synthesis. It is a type I membrane protein located in the endoplasmic reticulum (ER), where it is induced by ER stress caused by malformed proteins. Mutations in this gene are associated with Wolcott-Rallison syndrome. |
| Synonyms:             | PEK; PERK; WRS   |
| Protein Families:     | Druggable Genome, Protein Kinase, Secreted Protein, Transmembrane  |
| Protein Pathways:     | Alzheimer's disease  |



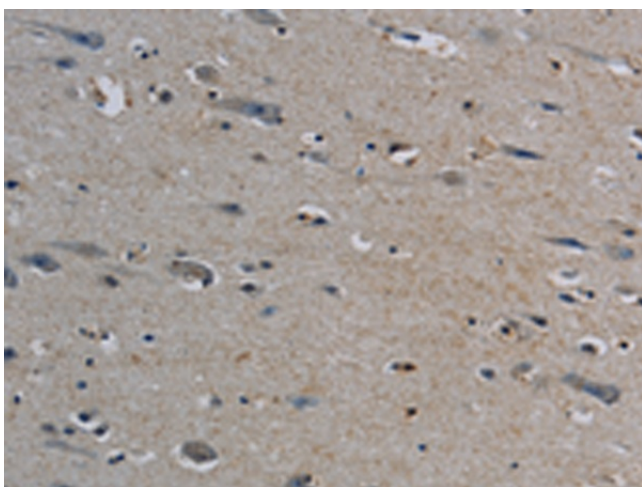
[View online »](#)

**Product images:**

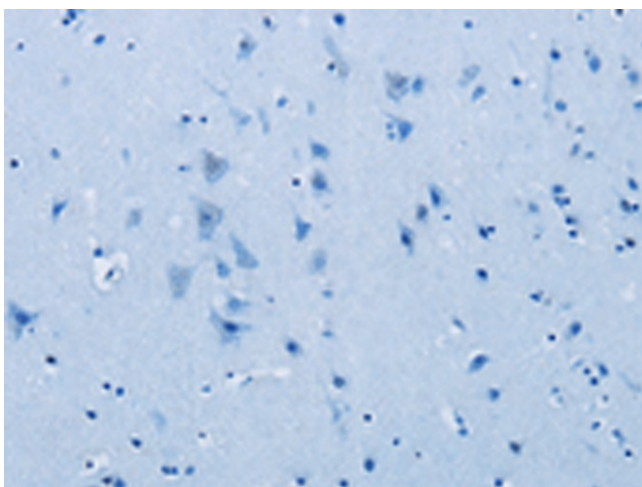
Immunohistochemistry of paraffin-embedded Human prostate cancer tissue using [TA351517] (EIF2AK3 Antibody) at dilution 1/50 (Original magnification:  $\times 200$ )



Immunohistochemistry of paraffin-embedded Human prostate cancer tissue using [TA351517] (EIF2AK3 Antibody) at dilution 1/50, treated with synthetic peptide. (Original magnification:  $\times 200$ )



Immunohistochemistry of paraffin-embedded Human brain tissue using [TA351517] (EIF2AK3 Antibody) at dilution 1/50 (Original magnification: ×200)



Immunohistochemistry of paraffin-embedded Human brain tissue using [TA351517] (EIF2AK3 Antibody) at dilution 1/50, treated with synthetic peptide. (Original magnification: ×200)