

Product datasheet for **TA351513S**

Perilipin-1 (PLIN1) Rabbit Polyclonal Antibody

Product data:

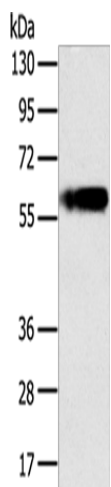
| | |
|-------------------------|---|
| Product Type: | Primary Antibodies |
| Applications: | WB |
| Recommended Dilution: | WB: 500-2000 WB positive control: Human fat tissue |
| Reactivity: | Human, Mouse, Rat |
| Host: | Rabbit |
| Isotype: | IgG |
| Clonality: | Polyclonal |
| Immunogen: | Synthetic peptide of human PLIN1 |
| Formulation: | pH7.4 PBS, 0.05% NaN ₃ , 40% Glycerol |
| Purification: | Antigen affinity purification |
| Conjugation: | Unconjugated |
| Storage: | Store at -20°C as received. |
| Stability: | Stable for 12 months from date of receipt. |
| Predicted Protein Size: | 56 kDa |
| Gene Name: | perilipin 1 |
| Database Link: | NP_001138783 Entrez Gene 25629 Rat Entrez Gene 103968 Mouse Entrez Gene 5346 Human O60240 |
| Background: | The protein encoded by this gene coats lipid storage droplets in adipocytes, thereby protecting them until they can be broken down by hormone-sensitive lipase. The encoded protein is the major cAMP-dependent protein kinase substrate in adipocytes and, when unphosphorylated, may play a role in the inhibition of lipolysis. Alternatively spliced transcript variants varying in the 5' UTR, but encoding the same protein, have been found for this gene. |
| Synonyms: | FPLD4; PERI; PLIN |
| Protein Families: | Druggable Genome |



[View online »](#)

Protein Pathways: PPAR signaling pathway

Product images:



Gel: 8%SDS-PAGE
Lysate: 40 μ g
Lane: Human fat tissue
Primary antibody: [TA351513] (PLIN1 Antibody) at dilution 1/200
Secondary antibody: Goat anti rabbit IgG at 1/8000 dilution
Exposure time: 1 minute