

## Product datasheet for **TA351513**

### Perilipin-1 (PLIN1) Rabbit Polyclonal Antibody

#### Product data:

Product Type:	Primary Antibodies
Applications:	WB
Recommended Dilution:	WB: 500-2000 WB positive control: Human fat tissue
Reactivity:	Human, Mouse, Rat
Host:	Rabbit
Isotype:	IgG
Clonality:	Polyclonal
Immunogen:	Synthetic peptide of human PLIN1
Formulation:	pH7.4 PBS, 0.05% NaN <sub>3</sub> , 40% Glycerol
Concentration:	lot specific
Purification:	Antigen affinity purification
Conjugation:	Unconjugated
Storage:	Store at -20°C as received.
Stability:	Stable for 12 months from date of receipt.
Predicted Protein Size:	56 kDa
Gene Name:	perilipin 1
Database Link:	<a href="#">NP_001138783</a> <a href="#">Entrez Gene 25629 Rat</a> <a href="#">Entrez Gene 103968 Mouse</a> <a href="#">Entrez Gene 5346 Human</a> <a href="#">O60240</a>

**Background:** The protein encoded by this gene coats lipid storage droplets in adipocytes, thereby protecting them until they can be broken down by hormone-sensitive lipase. The encoded protein is the major cAMP-dependent protein kinase substrate in adipocytes and, when unphosphorylated, may play a role in the inhibition of lipolysis. Alternatively spliced transcript variants varying in the 5' UTR, but encoding the same protein, have been found for this gene.

**Synonyms:** FPLD4; PERI; PLIN

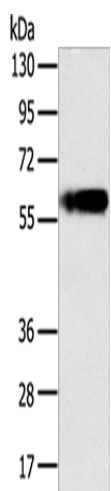


[View online »](#)

Protein Families: Druggable Genome

Protein Pathways: PPAR signaling pathway

### Product images:



Gel: 8%SDS-PAGE

Lysate: 40  $\mu$ g

Lane: Human fat tissue

Primary antibody: TA351513 (PLIN1 Antibody) at dilution 1/200

Secondary antibody: Goat anti rabbit IgG at 1/8000 dilution

Exposure time: 1 minute