

## Product datasheet for **TA351512S**

### PER2 Rabbit Polyclonal Antibody

#### Product data:

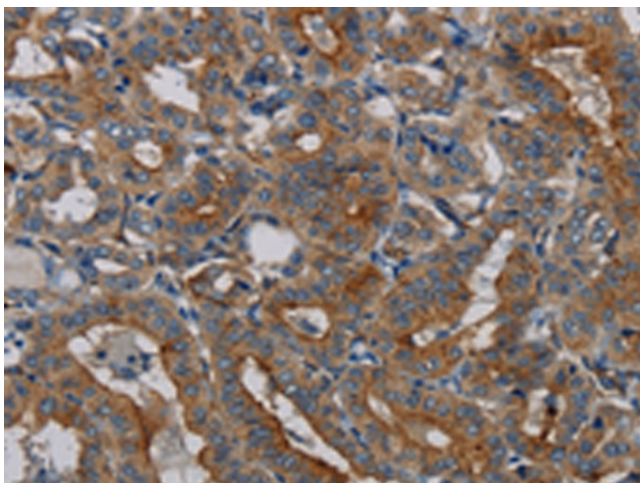
Product Type:	Primary Antibodies
Applications:	IHC
Recommended Dilution:	IHC: 100-300 Positive control: Human thyroid cancer Predicted cell location: Cytoplasm
Reactivity:	Human
Host:	Rabbit
Isotype:	IgG
Clonality:	Polyclonal
Immunogen:	Synthetic peptide of human PER2
Formulation:	pH7.4 PBS, 0.05% NaN <sub>3</sub> , 40% Glycerol
Purification:	Antigen affinity purification
Conjugation:	Unconjugated
Storage:	Store at -20°C as received.
Stability:	Stable for 12 months from date of receipt.
Gene Name:	period circadian clock 2
Database Link:	<a href="#">NP_073728</a> <a href="#">Entrez Gene 8864 Human</a> <a href="#">O15055</a>
Background:	This gene is a member of the Period family of genes and is expressed in a circadian pattern in the suprachiasmatic Nucleus, the primary circadian pacemaker in the mammalian brain. Genes in this family encode components of the circadian rhythms of locomotor activity, metabolism, and behavior. This gene is upregulated by CLOCK/ARNTL heterodimers but then represses this upregulation in a feedback loop using PER/CRY heterodimers to interact with CLOCK/ARNTL. Polymorphisms in this gene may increase the risk of getting certain cancers and have been linked to sleep disorders.
Synonyms:	FASPS; FASPS1
Protein Families:	Druggable Genome, Transcription Factors



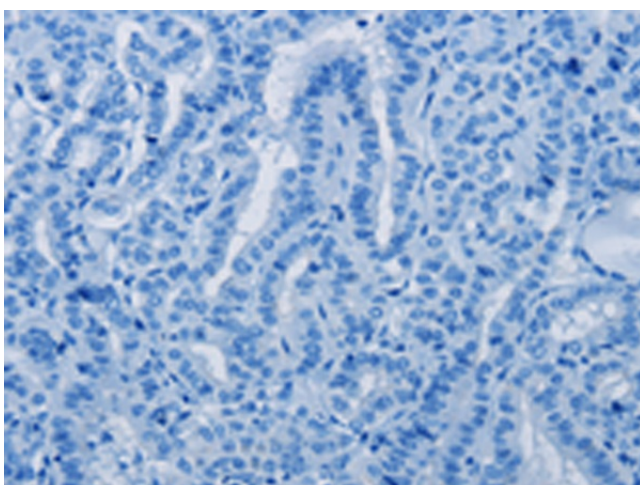
[View online »](#)

Protein Pathways: Circadian rhythm - mammal

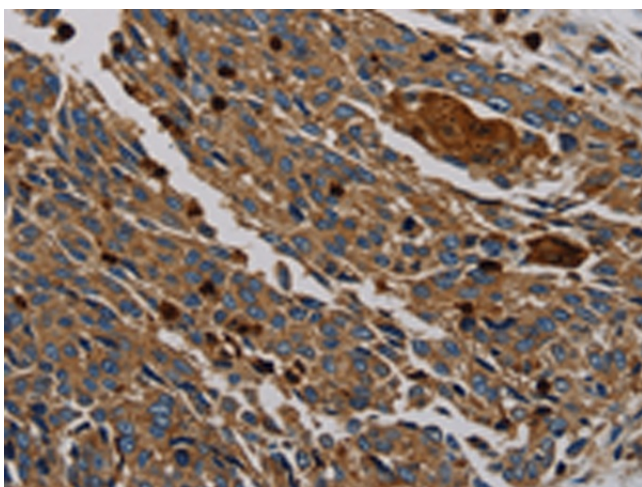
### Product images:



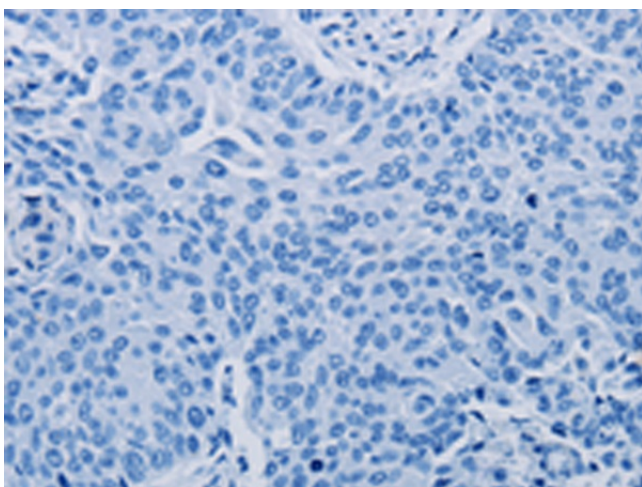
Immunohistochemistry of paraffin-embedded Human thyroid cancer tissue using [TA351512] (PER2 Antibody) at dilution 1/50 (Original magnification:  $\times 200$ )



Immunohistochemistry of paraffin-embedded Human thyroid cancer tissue using [TA351512] (PER2 Antibody) at dilution 1/50, treated with synthetic peptide. (Original magnification:  $\times 200$ )



Immunohistochemistry of paraffin-embedded Human lung cancer tissue using [TA351512] (PER2 Antibody) at dilution 1/50 (Original magnification:  $\times 200$ )



Immunohistochemistry of paraffin-embedded Human lung cancer tissue using [TA351512] (PER2 Antibody) at dilution 1/50, treated with synthetic peptide. (Original magnification:  $\times 200$ )