

Product datasheet for **TA351511**

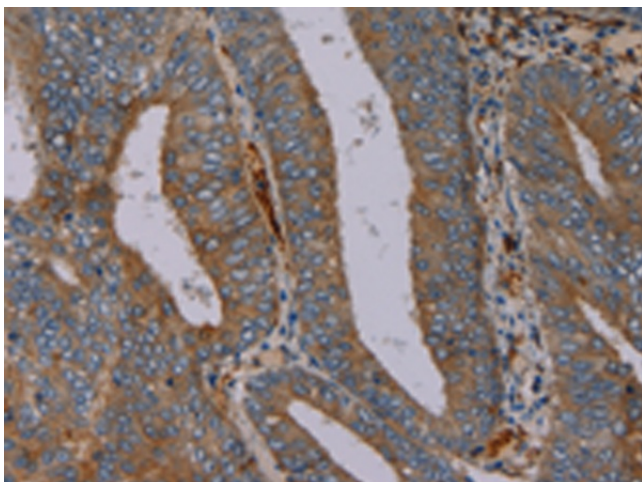
Peptide YY (PYY) Rabbit Polyclonal Antibody

Product data:

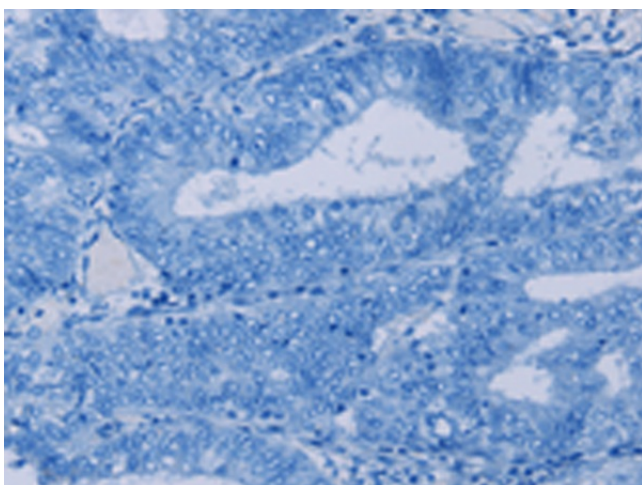
Product Type:	Primary Antibodies
Applications:	IHC
Recommended Dilution:	IHC: 50-200 Positive control: Human colon cancer Predicted cell location: Cytoplasm
Reactivity:	Human, Mouse, Rat
Host:	Rabbit
Isotype:	IgG
Clonality:	Polyclonal
Immunogen:	Synthetic peptide of human PYY
Formulation:	pH7.4 PBS, 0.05% NaN ₃ , 40% Glycerol
Concentration:	lot specific
Purification:	Antigen affinity purification
Conjugation:	Unconjugated
Storage:	Store at -20°C as received.
Stability:	Stable for 12 months from date of receipt.
Gene Name:	peptide YY
Database Link:	NP_004151 Entrez Gene 217212 MouseEntrez Gene 287730 RatEntrez Gene 5697 Human P10082
Background:	The protein encoded by this gene is proteolytically processed to release a peptide that inhibits pancreatic secretion and mobility in the gut. Rare variations in this gene could increase susceptibility to obesity.
Synonyms:	PYY-I; PYY1
Protein Families:	Secreted Protein, Transmembrane



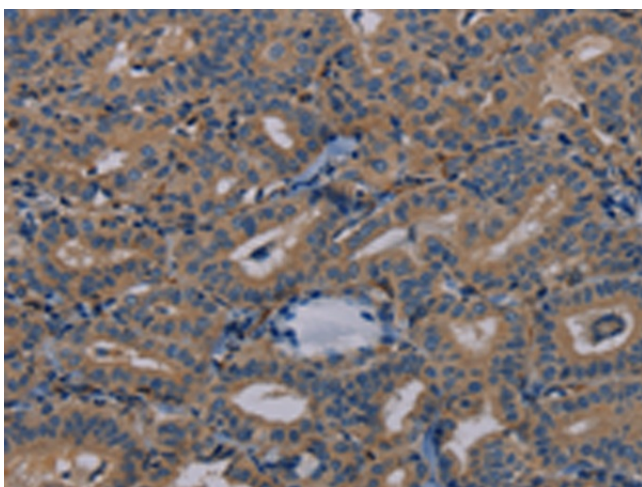
[View online »](#)

Product images:

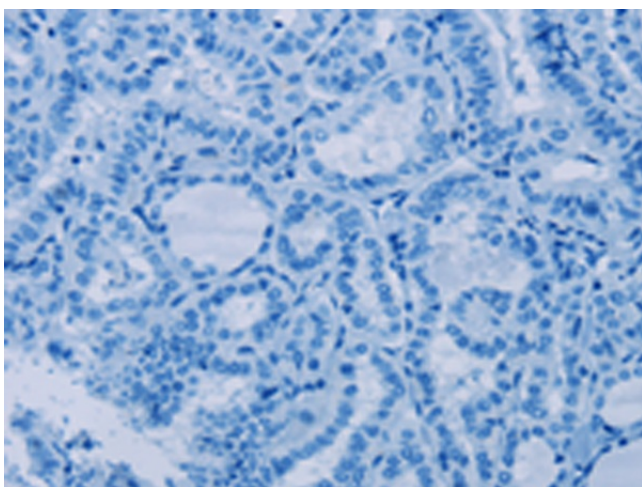
Immunohistochemistry of paraffin-embedded Human colon cancer tissue using TA351511 (PYY Antibody) at dilution 1/40 (Original magnification: $\times 200$)



Immunohistochemistry of paraffin-embedded Human colon cancer tissue using TA351511 (PYY Antibody) at dilution 1/40, treated with synthetic peptide. (Original magnification: $\times 200$)



Immunohistochemistry of paraffin-embedded Human thyroid cancer tissue using TA351511 (PYY Antibody) at dilution 1/40 (Original magnification: $\times 200$)



Immunohistochemistry of paraffin-embedded Human thyroid cancer tissue using TA351511 (PYY Antibody) at dilution 1/40, treated with synthetic peptide. (Original magnification: $\times 200$)