

Product datasheet for **TA351510S**

PDSS2 Rabbit Polyclonal Antibody

Product data:

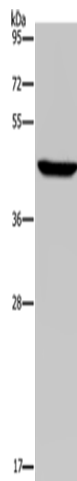
| | |
|-------------------------|--|
| Product Type: | Primary Antibodies |
| Applications: | IHC, WB |
| Recommended Dilution: | WB: 500-2000 WB positive control: Hela cells IHC: 25-100 Positive control: Human liver cancer Predicted cell location: Cytoplasm |
| Reactivity: | Human |
| Host: | Rabbit |
| Isotype: | IgG |
| Clonality: | Polyclonal |
| Immunogen: | Synthetic peptide of human PDSS2 |
| Formulation: | pH7.4 PBS, 0.05% NaN ₃ , 40% Glycerol |
| Purification: | Antigen affinity purification |
| Conjugation: | Unconjugated |
| Storage: | Store at -20°C as received. |
| Stability: | Stable for 12 months from date of receipt. |
| Predicted Protein Size: | 44 kDa |
| Gene Name: | prenyl (decaprenyl) diphosphate synthase, subunit 2 |
| Database Link: | NP_065114 Entrez Gene 57107 Human Q86YH6 |
| Background: | The protein encoded by this gene is an enzyme that synthesizes the prenyl side-chain of coenzyme Q, or ubiquinone, one of the key elements in the respiratory chain. The gene product catalyzes the formation of all trans-polyprenyl pyrophosphates from isopentenyl diphosphate in the assembly of polyisoprenoid side chains, the first step in coenzyme Q biosynthesis. Defects in this gene are a cause of coenzyme Q10 deficiency. |
| Synonyms: | bA59I9.3; C6orf210; COQ10D3; DLP1; hDLP1 |



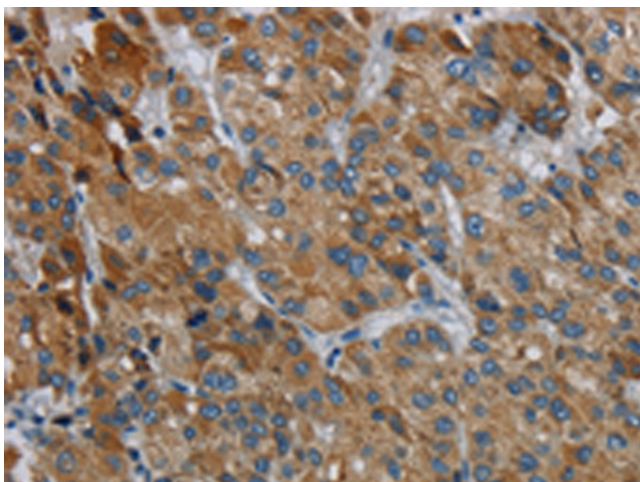
[View online »](#)

Protein Pathways: Terpenoid backbone biosynthesis

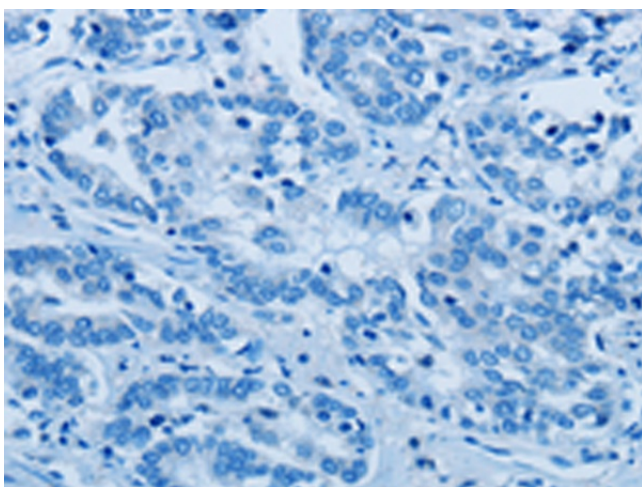
Product images:



Gel: 8%SDS-PAGE
Lysate: 40 μ g
Lane: HeLa cells
Primary antibody: [TA351510] (PDSS2 Antibody) at dilution 1/400
Secondary antibody: Goat anti rabbit IgG at 1/8000 dilution
Exposure time: 20 seconds



Immunohistochemistry of paraffin-embedded Human liver cancer tissue using [TA351510] (PDSS2 Antibody) at dilution 1/30 (Original magnification: $\times 200$)



Immunohistochemistry of paraffin-embedded Human liver cancer tissue using [TA351510] (PDSS2 Antibody) at dilution 1/30, treated with synthetic peptide. (Original magnification: ×200)