

Product datasheet for **TA351506S**

PDE4A Rabbit Polyclonal Antibody

Product data:

Product Type:	Primary Antibodies
Applications:	IHC, WB
Recommended Dilution:	WB: 500-2000 WB positive control: Hela and A172 cells IHC: 50-200 Positive control: Human thyroid cancer Predicted cell location: Cytoplasm
Reactivity:	Human
Host:	Rabbit
Isotype:	IgG
Clonality:	Polyclonal
Immunogen:	Synthetic peptide of human PDE4A
Formulation:	pH7.4 PBS, 0.05% NaN ₃ , 40% Glycerol
Purification:	Antigen affinity purification
Conjugation:	Unconjugated
Storage:	Store at -20°C as received.
Stability:	Stable for 12 months from date of receipt.
Predicted Protein Size:	98 kDa
Gene Name:	phosphodiesterase 4A
Database Link:	NP_006193 Entrez Gene 5141 Human P27815

Background: The protein encoded by this gene belongs to the cyclic nucleotide phosphodiesterase (PDE) family, and PDE4 subfamily. This PDE hydrolyzes the second messenger, cAMP, which is a regulator and mediator of a number of cellular responses to extracellular signals. Thus, by regulating the cellular concentration of cAMP, this protein plays a key role in many important physiological processes. Alternatively spliced transcript variants encoding different isoforms have been described for this gene.



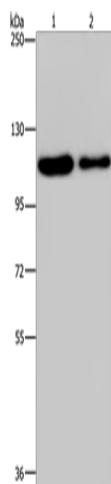
[View online »](#)

Synonyms: DPDE2; PDE4; PDE46

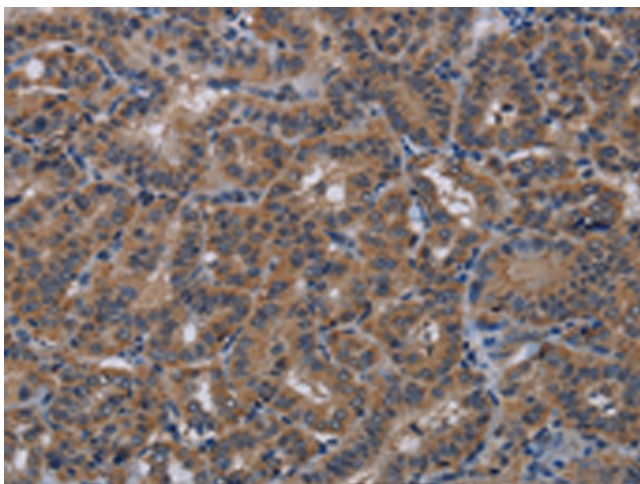
Protein Families: Druggable Genome

Protein Pathways: Progesterone-mediated oocyte maturation, Purine metabolism

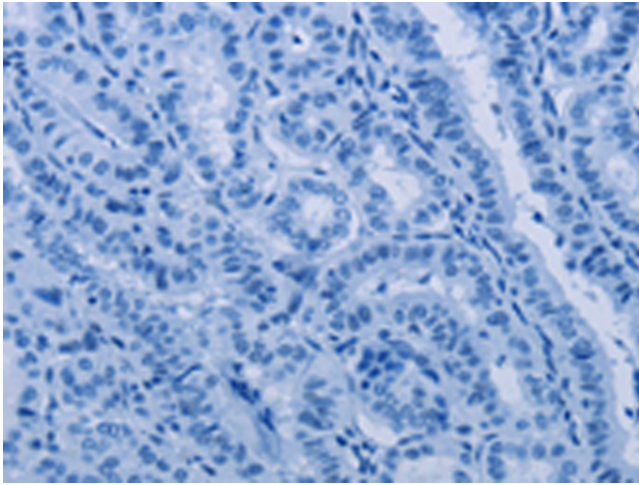
Product images:



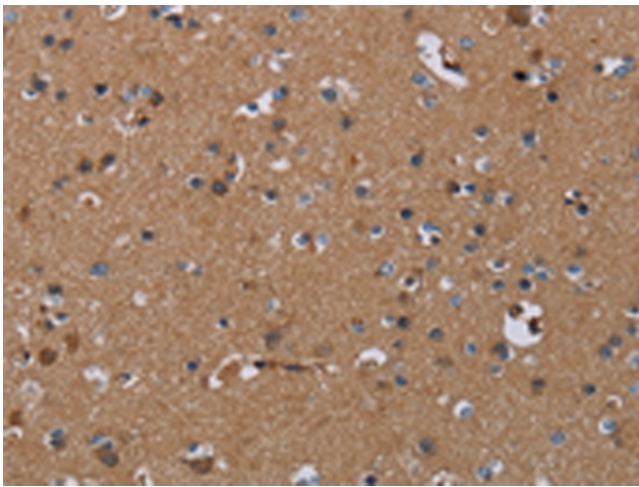
Gel: 6%SDS-PAGE
Lysate: 40 µg
Lane 1-2: HeLa cells
A172 cells
Primary antibody: [TA351506] (PDE4A Antibody)
at dilution 1/300
Secondary antibody: Goat anti rabbit IgG at
1/8000 dilution
Exposure time: 20 seconds



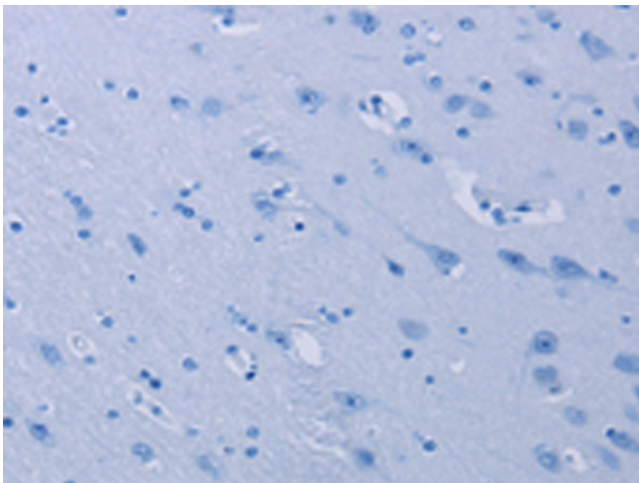
Immunohistochemistry of paraffin-embedded
Human thyroid cancer tissue using [TA351506]
(PDE4A Antibody) at dilution 1/40 (Original
magnification: ×200)



Immunohistochemistry of paraffin-embedded Human thyroid cancer tissue using [TA351506] (PDE4A Antibody) at dilution 1/40, treated with synthetic peptide. (Original magnification: x200)



Immunohistochemistry of paraffin-embedded Human brain tissue using [TA351506] (PDE4A Antibody) at dilution 1/40 (Original magnification: x200)



Immunohistochemistry of paraffin-embedded Human brain tissue using [TA351506] (PDE4A Antibody) at dilution 1/40, treated with synthetic peptide. (Original magnification: x200)