

## Product datasheet for **TA351506**

### PDE4A Rabbit Polyclonal Antibody

#### Product data:

Product Type:	Primary Antibodies
Applications:	IHC, WB
Recommended Dilution:	WB: 500-2000 WB positive control: Hela and A172 cells IHC: 50-200 Positive control: Human thyroid cancer Predicted cell location: Cytoplasm
Reactivity:	Human
Host:	Rabbit
Isotype:	IgG
Clonality:	Polyclonal
Immunogen:	Synthetic peptide of human PDE4A
Formulation:	pH7.4 PBS, 0.05% NaN <sub>3</sub> , 40% Glycerol
Concentration:	lot specific
Purification:	Antigen affinity purification
Conjugation:	Unconjugated
Storage:	Store at -20°C as received.
Stability:	Stable for 12 months from date of receipt.
Predicted Protein Size:	98 kDa
Gene Name:	phosphodiesterase 4A
Database Link:	<a href="#">NP_006193</a> <a href="#">Entrez Gene 5141 Human P27815</a>



[View online »](#)

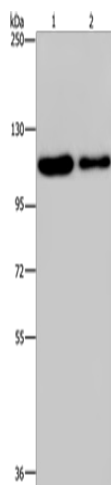
**Background:** The protein encoded by this gene belongs to the cyclic nucleotide phosphodiesterase (PDE) family, and PDE4 subfamily. This PDE hydrolyzes the second messenger, cAMP, which is a regulator and mediator of a number of cellular responses to extracellular signals. Thus, by regulating the cellular concentration of cAMP, this protein plays a key role in many important physiological processes. Alternatively spliced transcript variants encoding different isoforms have been described for this gene.

**Synonyms:** DPDE2; PDE4; PDE46

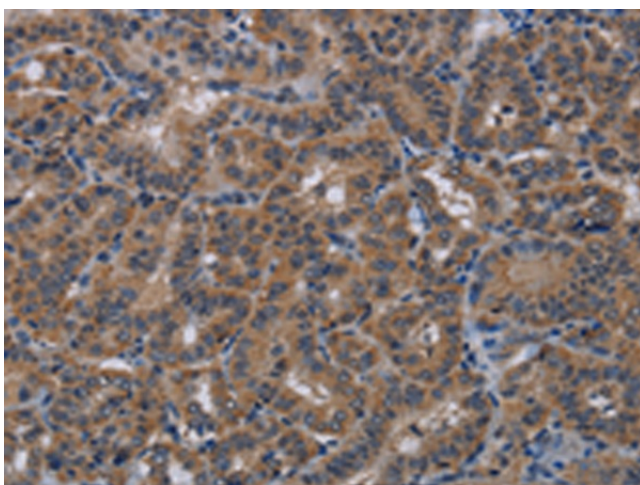
**Protein Families:** Druggable Genome

**Protein Pathways:** Progesterone-mediated oocyte maturation, Purine metabolism

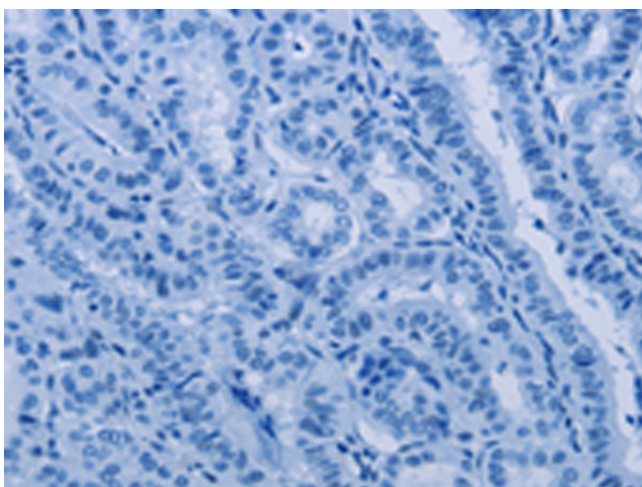
**Product images:**



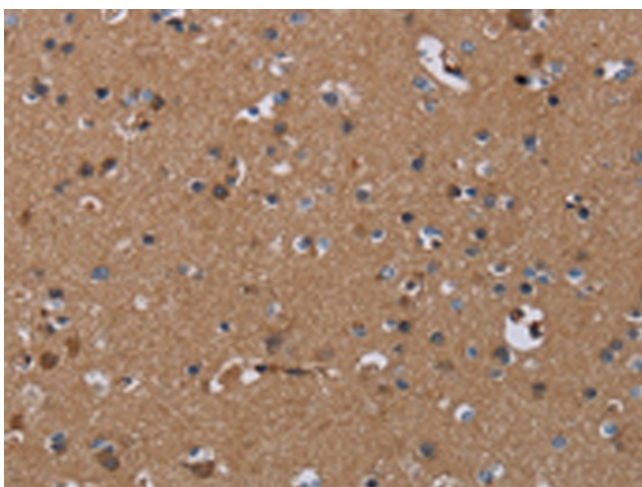
Gel: 6%SDS-PAGE  
 Lysate: 40 µg  
 Lane 1-2: Hela cells  
 A172 cells  
 Primary antibody: TA351506 (PDE4A Antibody) at dilution 1/300  
 Secondary antibody: Goat anti rabbit IgG at 1/8000 dilution  
 Exposure time: 20 seconds



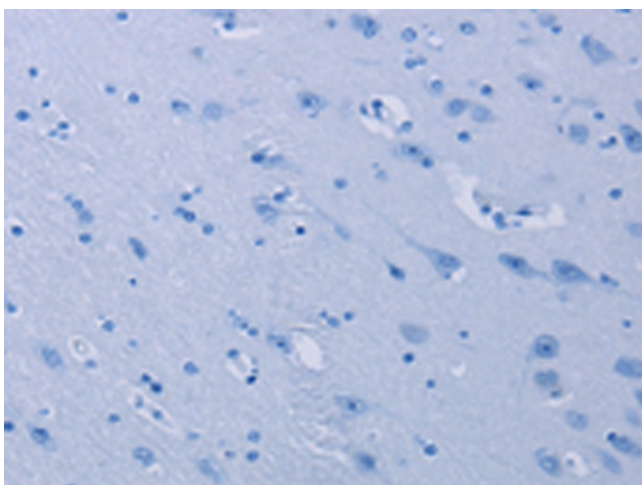
Immunohistochemistry of paraffin-embedded Human thyroid cancer tissue using TA351506 (PDE4A Antibody) at dilution 1/40 (Original magnification: ×200)



Immunohistochemistry of paraffin-embedded Human thyroid cancer tissue using TA351506 (PDE4A Antibody) at dilution 1/40, treated with synthetic peptide. (Original magnification: ×200)



Immunohistochemistry of paraffin-embedded Human brain tissue using TA351506 (PDE4A Antibody) at dilution 1/40 (Original magnification: ×200)



Immunohistochemistry of paraffin-embedded Human brain tissue using TA351506 (PDE4A Antibody) at dilution 1/40, treated with synthetic peptide. (Original magnification: ×200)