

Product datasheet for **TA351502**

KDM4B Rabbit Polyclonal Antibody

Product data:

Product Type:	Primary Antibodies
Applications:	IHC
Recommended Dilution:	IHC: 50-200 Positive control: Human ovarian cancer Predicted cell location: Nucleus
Reactivity:	Human
Host:	Rabbit
Isotype:	IgG
Clonality:	Polyclonal
Immunogen:	Synthetic peptide of human KDM4B
Formulation:	pH7.4 PBS, 0.05% NaN ₃ , 40% Glycerol
Concentration:	lot specific
Purification:	Antigen affinity purification
Conjugation:	Unconjugated
Storage:	Store at -20°C as received.
Stability:	Stable for 12 months from date of receipt.
Gene Name:	lysine demethylase 4B
Database Link:	NP_055830 Entrez Gene 23030 Human O94953



[View online »](#)

Background:

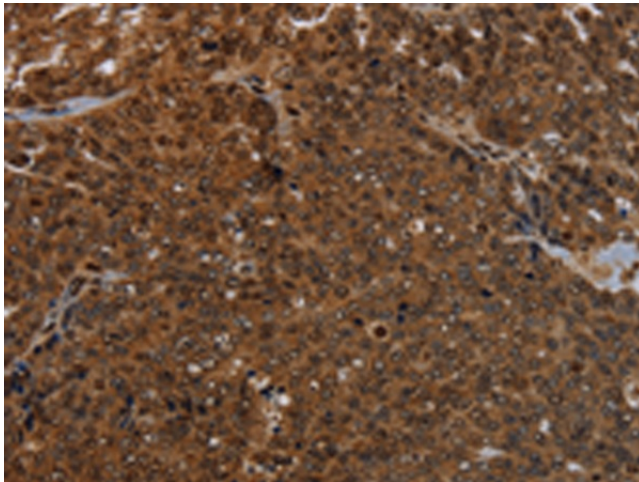
JMJD2B (JmjC domain-containing histone demethylation protein 3A) is a 1,064 amino acid protein encoded by the human gene JMJD2B. JMJD2B belongs to the JMJD2B histone demethylase family and contains one JmjC domain, one JmjN domain, two PHD-type zinc fingers and two Tudor domains. The two Tudor domains recognize and bind methylated histones and have an interdigitated structure; the unusual fold is required for its ability to bind methylated histone tails. JMJD2B is a histone demethylase that specifically demethylates Lys 9 residues of Histone H3, thereby playing a role in histone code. It does not demethylate Histone H3 Lys 4, H3 Lys 27, H3 Lys 36 or H4 Lys 20, however, and is only able to demethylate trimethylated H3 Lys-9 and has weaker activity than JMJD2A, JMJD2C and JMJD2D. JMJD2B demethyl-ation of Lysine residues will generate formaldehyde and succinate. JMJD2B is a ubiquitously expressed nuclear protein.

Synonyms:

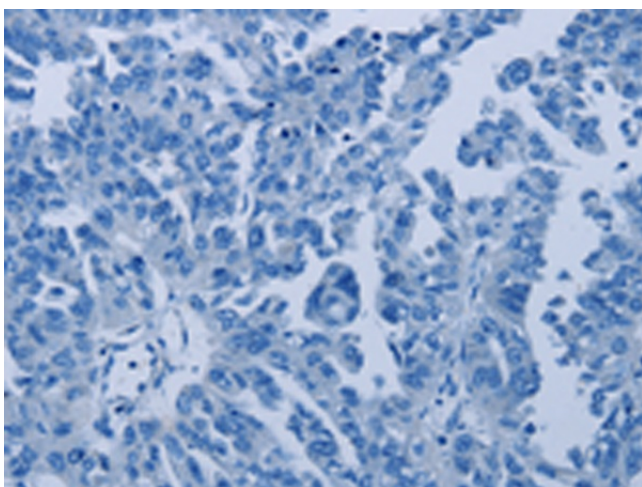
JMJD2B; TDRD14B

Protein Families:

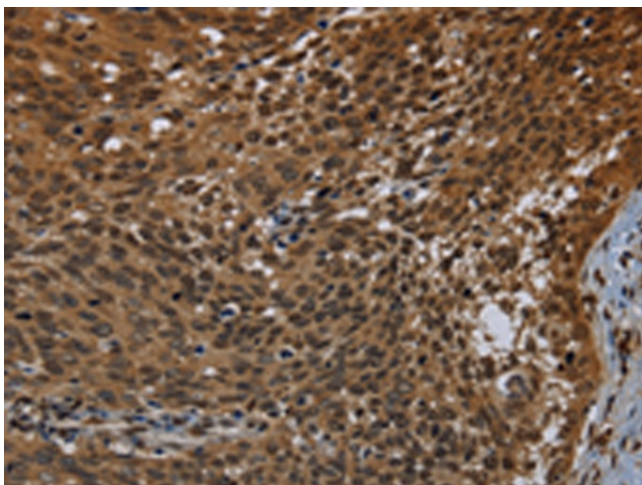
Druggable Genome

Product images:

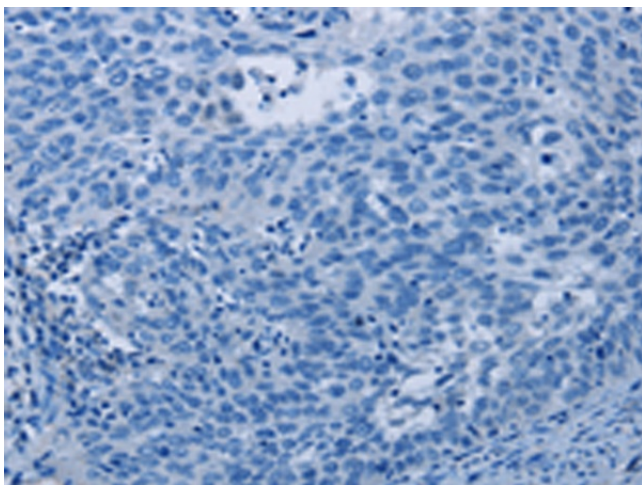
Immunohistochemistry of paraffin-embedded Human ovarian cancer tissue using TA351502 (KDM4B Antibody) at dilution 1/50 (Original magnification: $\times 200$)



Immunohistochemistry of paraffin-embedded Human ovarian cancer tissue using TA351502 (KDM4B Antibody) at dilution 1/50, treated with synthetic peptide. (Original magnification: ×200)



Immunohistochemistry of paraffin-embedded Human cervical cancer tissue using TA351502 (KDM4B Antibody) at dilution 1/50 (Original magnification: ×200)



Immunohistochemistry of paraffin-embedded Human cervical cancer tissue using TA351502 (KDM4B Antibody) at dilution 1/50, treated with synthetic peptide. (Original magnification: ×200)