

Product datasheet for **TA351497S**

PBOV1 Rabbit Polyclonal Antibody

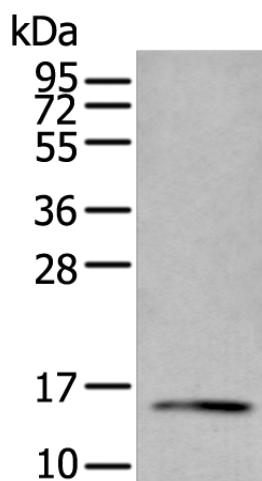
Product data:

Product Type:	Primary Antibodies
Applications:	IHC, WB
Recommended Dilution:	WB: 200–1000 WB positive control: Human fetal intestines tissue lysate IHC: 10–50 Positive control: Human breast cancer Predicted cell location: Cytoplasm
Reactivity:	Human
Host:	Rabbit
Isotype:	IgG
Clonality:	Polyclonal
Immunogen:	Synthetic peptide of human PBOV1
Formulation:	pH7.4 PBS, 0.05% NaN ₃ , 40% Glycerol
Purification:	Antigen affinity purification
Conjugation:	Unconjugated
Storage:	Store at –20°C as received.
Stability:	Stable for 12 months from date of receipt.
Predicted Protein Size:	16 kDa
Gene Name:	prostate and breast cancer overexpressed 1
Database Link:	NP_067648 Entrez Gene 59351 Human Q9GZY1
Background:	This intronless gene encodes a protein of unknown function. Its expression is up-regulated in some types of cancer, including prostate, breast, and bladder cancer.



Synonyms: dJ171N11.2; UC28; UROC28

Product images:



Gel: 12%SDS-PAGE

Lysate: 40 µg

Lane: Human fetal intestines tissue lysate

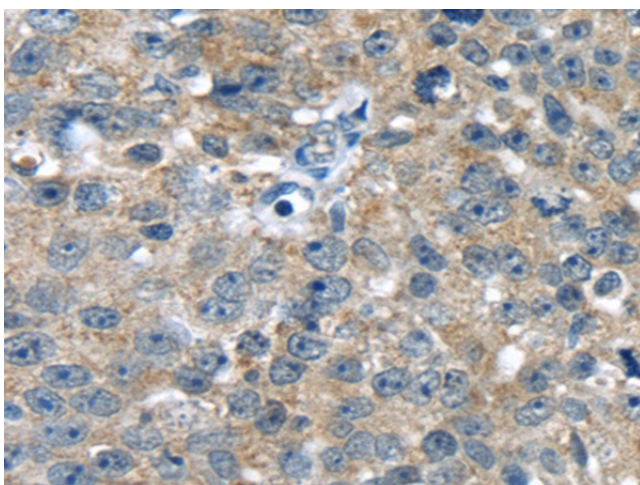
Primary antibody: [TA351497] (PBOV1

Antibody) at dilution 1/300

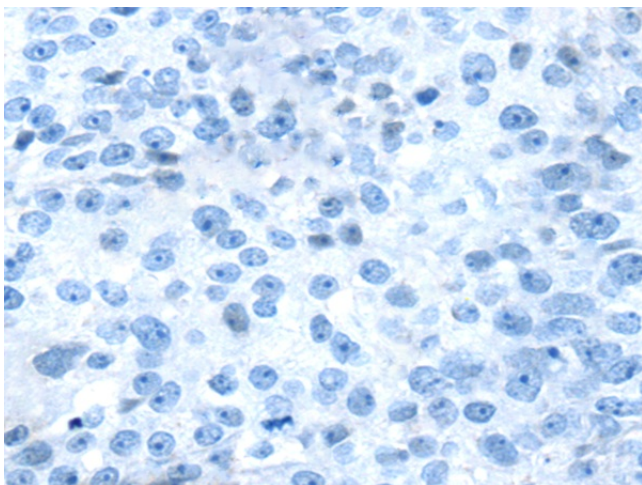
Secondary antibody: Goat anti rabbit IgG at

1/8000 dilution

Exposure time: 1 minute



Immunohistochemistry of paraffin-
embedded Human breast cancer tissue using
[TA351497] (PBOV1 Antibody) at dilution 1/20
(Original magnification: ×200)



Immunohistochemistry of paraffin-embedded Human breast cancer tissue using [TA351497] (PBOV1 Antibody) at dilution 1/20, treated with synthetic peptide. (Original magnification: $\times 200$)