

Product datasheet for **TA351497**

PBOV1 Rabbit Polyclonal Antibody

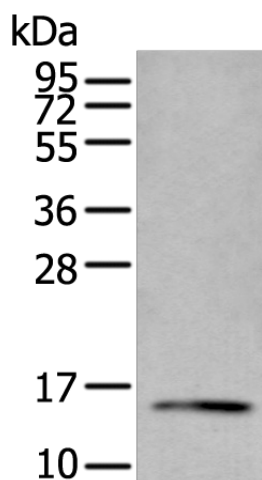
Product data:

Product Type:	Primary Antibodies
Applications:	IHC, WB
Recommended Dilution:	WB: 200-1000 WB positive control: Human fetal intestines tissue lysate IHC: 10-50 Positive control: Human breast cancer Predicted cell location: Cytoplasm
Reactivity:	Human
Host:	Rabbit
Isotype:	IgG
Clonality:	Polyclonal
Immunogen:	Synthetic peptide of human PBOV1
Formulation:	pH7.4 PBS, 0.05% NaN ₃ , 40% Glycerol
Concentration:	lot specific
Purification:	Antigen affinity purification
Conjugation:	Unconjugated
Storage:	Store at -20°C as received.
Stability:	Stable for 12 months from date of receipt.
Predicted Protein Size:	16 kDa
Gene Name:	prostate and breast cancer overexpressed 1
Database Link:	NP_067648 Entrez Gene 59351 Human Q9GZY1
Background:	This intronless gene encodes a protein of unknown function. Its expression is up-regulated in some types of cancer, including prostate, breast, and bladder cancer.
Synonyms:	dj171N11.2; UC28; UROC28

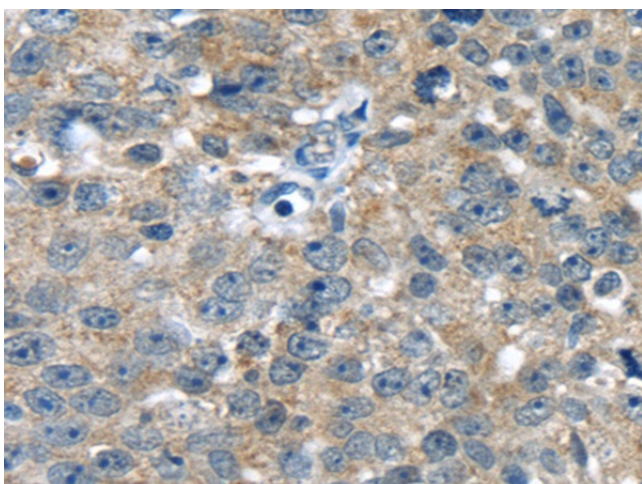


[View online »](#)

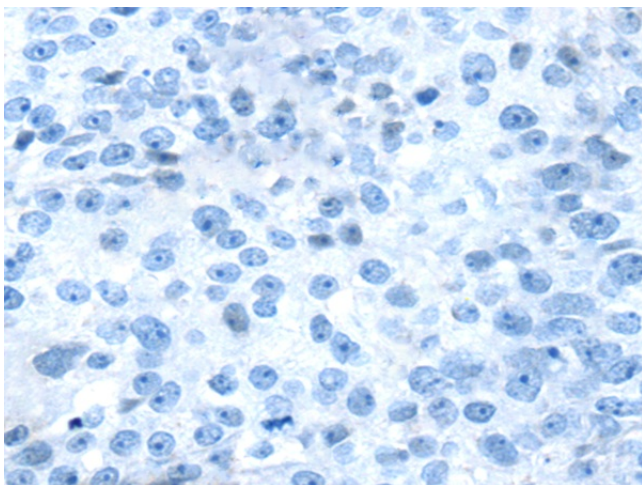
Product images:



Gel: 12%SDS-PAGE
Lysate: 40 μ g
Lane: Human fetal intestines tissue lysate
Primary antibody: TA351497 (PBOV1 Antibody) at dilution 1/300
Secondary antibody: Goat anti rabbit IgG at 1/8000 dilution
Exposure time: 1 minute



Immunohistochemistry of paraffin-embedded Human breast cancer tissue using TA351497 (PBOV1 Antibody) at dilution 1/20 (Original magnification: \times 200)



Immunohistochemistry of paraffin-embedded Human breast cancer tissue using TA351497 (PBOV1 Antibody) at dilution 1/20, treated with synthetic peptide. (Original magnification: $\times 200$)