

Product datasheet for **TA351488**

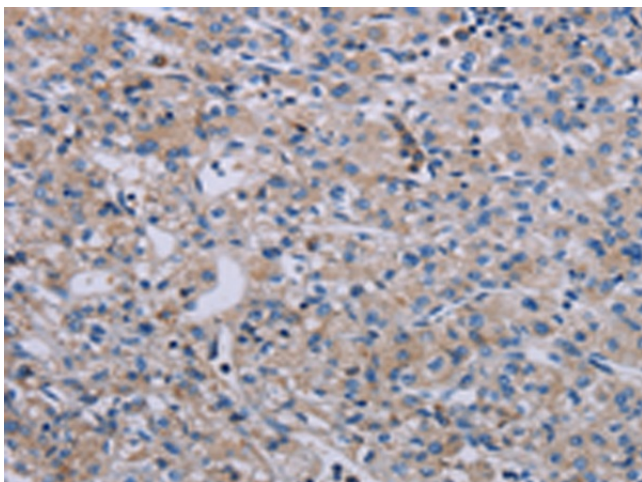
PAGE4 Rabbit Polyclonal Antibody

Product data:

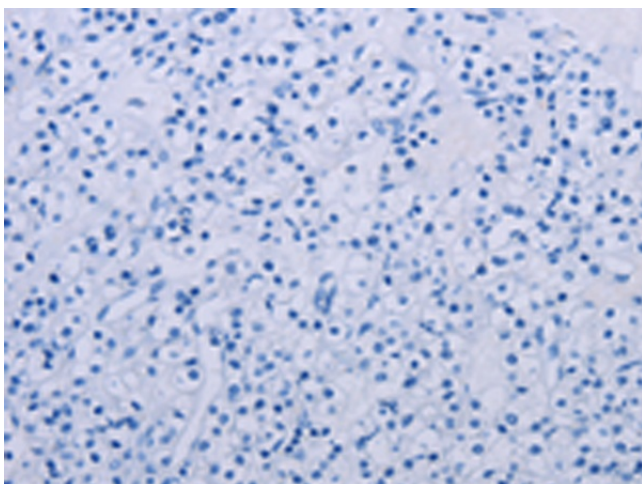
Product Type:	Primary Antibodies
Applications:	IHC
Recommended Dilution:	IHC: 25-100 Positive control: Human prostate cancer Predicted cell location: Cytoplasm
Reactivity:	Human
Host:	Rabbit
Isotype:	IgG
Clonality:	Polyclonal
Immunogen:	Synthetic peptide of human PAGE4
Formulation:	pH7.4 PBS, 0.05% NaN ₃ , 40% Glycerol
Concentration:	lot specific
Purification:	Antigen affinity purification
Conjugation:	Unconjugated
Storage:	Store at -20°C as received.
Stability:	Stable for 12 months from date of receipt.
Gene Name:	PAGE family member 4
Database Link:	NP_008934 Entrez Gene 9506 Human O60829
Background:	This gene is a member of the GAGE family. The GAGE genes are expressed in a variety of tumors and in some fetal and reproductive tissues. This gene is strongly expressed in prostate and prostate cancer. It is also expressed in other male and female reproductive tissues including testis, fallopian tube, uterus, and placenta, as well as in testicular cancer and uterine cancer. The protein encoded by this gene shares sequence similarity with other GAGE/PAGE proteins, and also belongs to a family of CT (cancer-testis) antigens.
Synonyms:	CT16.7; GAGE-9; GAGEC1; JM-27; JM27; PAGE-1; PAGE-4



[View online »](#)

Product images:

Immunohistochemistry of paraffin-embedded Human prostate cancer tissue using TA351488 (PAGE4 Antibody) at dilution 1/40 (Original magnification: ×200)



Immunohistochemistry of paraffin-embedded Human prostate cancer tissue using TA351488 (PAGE4 Antibody) at dilution 1/40, treated with synthetic peptide. (Original magnification: ×200)