

## Product datasheet for **TA351487S**

### **P70 S6 Kinase beta (RPS6KB2) Rabbit Polyclonal Antibody**

#### **Product data:**

<b>Product Type:</b>	Primary Antibodies
<b>Applications:</b>	IHC, WB
<b>Recommended Dilution:</b>	WB: 200-1000 WB positive control: Hela and K562 cells IHC: 25-100 Positive control: Human prostate cancer Predicted cell location: Cytoplasm
<b>Reactivity:</b>	Human, Mouse
<b>Host:</b>	Rabbit
<b>Isotype:</b>	IgG
<b>Clonality:</b>	Polyclonal
<b>Immunogen:</b>	Synthetic peptide of human RPS6KB2
<b>Formulation:</b>	pH7.4 PBS, 0.05% NaN <sub>3</sub> , 40% Glycerol
<b>Purification:</b>	Antigen affinity purification
<b>Conjugation:</b>	Unconjugated
<b>Storage:</b>	Store at -20°C as received.
<b>Stability:</b>	Stable for 12 months from date of receipt.
<b>Predicted Protein Size:</b>	53 kDa
<b>Gene Name:</b>	ribosomal protein S6 kinase B2
<b>Database Link:</b>	<a href="#">NP_003943</a> <a href="#">Entrez Gene 58988 Mouse</a> <a href="#">Entrez Gene 6199 Human</a> <a href="#">Q9UBS0</a>
<b>Background:</b>	This gene encodes a member of the RSK (ribosomal S6 kinase) family of serine/threonine kinases. This kinase contains 2 nonidentical kinase catalytic domains and phosphorylates the S6 ribosomal protein and eucaryotic translation initiation factor 4B (eIF4B). Phosphorylation of S6 leads to an increase in protein synthesis and cell proliferation.
<b>Synonyms:</b>	KLS; p70(S6K)-beta; P70-beta; P70-beta-1; P70-beta-2; p70S6Kb; S6K-beta2; S6K2; SRK; STK14B
<b>Protein Families:</b>	Druggable Genome, Protein Kinase



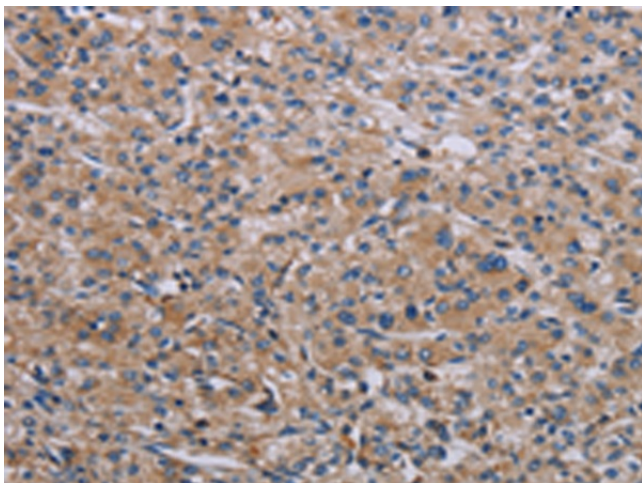
[View online »](#)

**Protein Pathways:** Acute myeloid leukemia, ErbB signaling pathway, Fc gamma R-mediated phagocytosis, Insulin signaling pathway, mTOR signaling pathway, TGF-beta signaling pathway

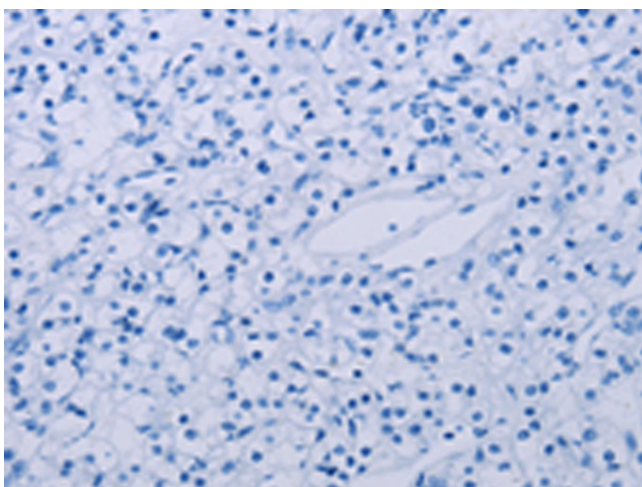
**Product images:**



Gel: 8%SDS-PAGE  
Lysate: 40 µg  
Lane 1-2: HeLa cells  
K562 cells  
Primary antibody: [TA351487] (RPS6KB2  
Antibody) at dilution 1/250  
Secondary antibody: Goat anti rabbit IgG at  
1/8000 dilution  
Exposure time: 10 minutes



Immunohistochemistry of paraffin-embedded  
Human prostate cancer tissue using [TA351487]  
(RPS6KB2 Antibody) at dilution 1/40 (Original  
magnification: ×200)



Immunohistochemistry of paraffin-embedded Human prostate cancer tissue using [TA351487] (RPS6KB2 Antibody) at dilution 1/40, treated with synthetic peptide. (Original magnification: ×200)