

Product datasheet for **TA351485**

p53 DINP1 (TP53INP1) Rabbit Polyclonal Antibody

Product data:

Product Type:	Primary Antibodies
Applications:	IHC, WB
Recommended Dilution:	WB: 200-1000 WB positive control: Human fetal liver tissue, 293T and 231 cells IHC: 50-200 Positive control: Human brain Predicted cell location: Cytoplasm
Reactivity:	Human
Host:	Rabbit
Isotype:	IgG
Clonality:	Polyclonal
Immunogen:	Synthetic peptide of human TP53INP1
Formulation:	pH7.4 PBS, 0.05% NaN ₃ , 40% Glycerol
Concentration:	lot specific
Purification:	Antigen affinity purification
Conjugation:	Unconjugated
Storage:	Store at -20°C as received.
Stability:	Stable for 12 months from date of receipt.
Predicted Protein Size:	27 kDa
Gene Name:	tumor protein p53 inducible nuclear protein 1
Database Link:	NP_150601 Entrez Gene 94241 Human Q96A56



[View online »](#)

Background:

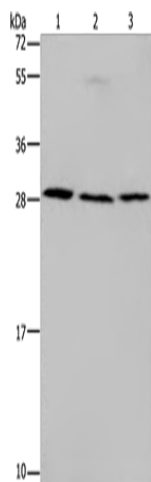
TP53INP1 (tumor protein p53-inducible nuclear protein 1), also known as p53DINP1, SIP or Teap, is a 240 amino acid protein that localizes to nuclear bodies and exists as two alternatively spliced isoforms, designated p53DINP1a and p53DINP1b. Expressed ubiquitously with higher expression in testis, pancreas and spleen tissue, TP53INP1 functions in response to double-stranded DNA breaks and regulates p53-mediated apoptosis, specifically by phosphorylating human p53 at Ser 46, an event that leads to cell death. Additionally, TP53INP1 is thought to interact with p73 and may be involved in the regulation of p73-controlled cell cycle progression. TP53INP1 expression is downregulated in pancreatic ductal adenocarcinomas, suggesting that, via its ability to induce cell death, TP53INP1 plays a role in tumor suppression.

Synonyms:

p53DINP1; SIP; Teap; TP53DINP1; TP53INP1A; TP53INP1B

Protein Families:

Druggable Genome

Product images:

Gel: 10%SDS-PAGE

Lysate: 40 µg

Lane 1-3: Human fetal liver tissue

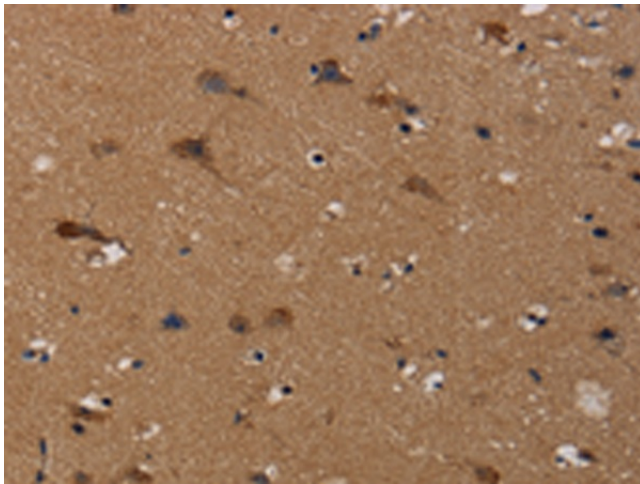
293T cells

231 cells

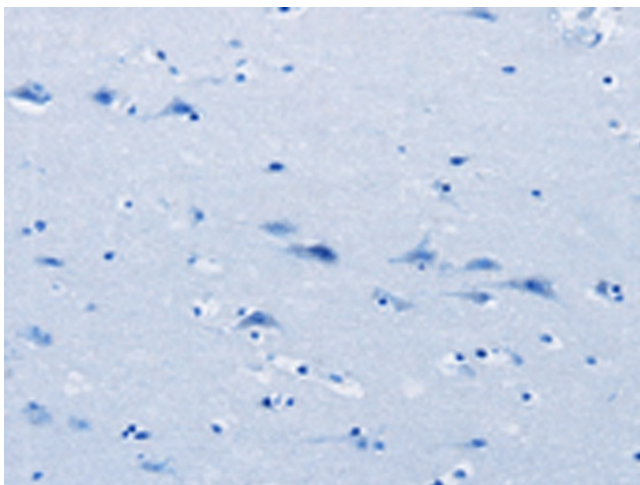
Primary antibody: TA351485 (TP53INP1 Antibody)
at dilution 1/200

Secondary antibody: Goat anti rabbit IgG at
1/8000 dilution

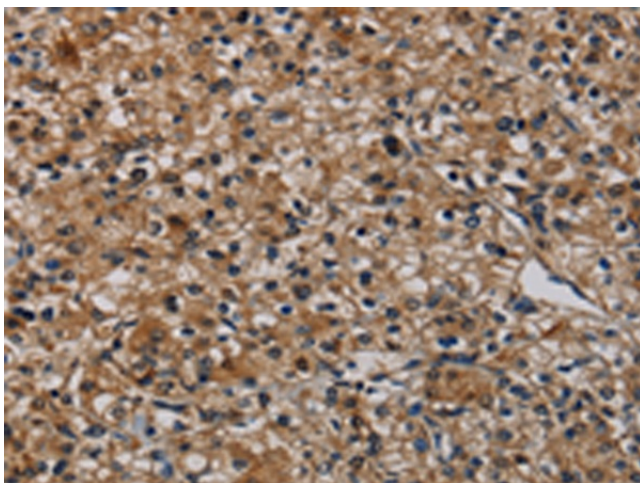
Exposure time: 1 minute



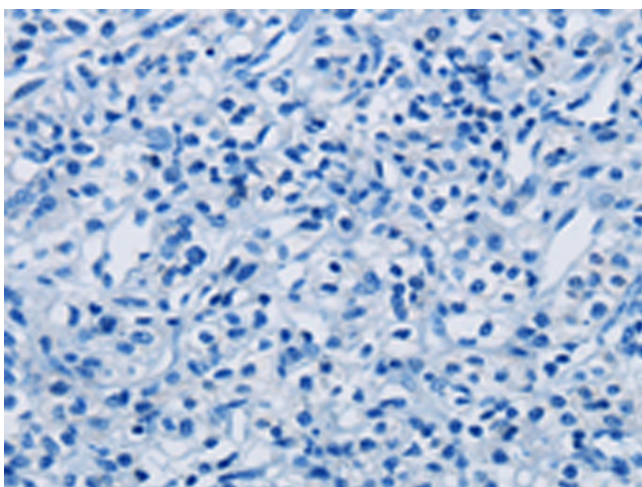
Immunohistochemistry of paraffin-embedded Human brain tissue using TA351485 (TP53INP1 Antibody) at dilution 1/50 (Original magnification: ×200)



Immunohistochemistry of paraffin-embedded Human brain tissue using TA351485 (TP53INP1 Antibody) at dilution 1/50, treated with synthetic peptide. (Original magnification: ×200)



Immunohistochemistry of paraffin-embedded Human prostate cancer tissue using TA351485 (TP53INP1 Antibody) at dilution 1/50 (Original magnification: ×200)



Immunohistochemistry of paraffin-embedded Human prostate cancer tissue using TA351485 (TP53INP1 Antibody) at dilution 1/50, treated with synthetic peptide. (Original magnification: ×200)