

Product datasheet for **TA351484**

Cytochrome P450 1A2 (CYP1A2) Rabbit Polyclonal Antibody

Product data:

Product Type:	Primary Antibodies
Applications:	IHC, WB
Recommended Dilution:	WB: 200-1000 WB positive control: Human hepatocellular carcinoma tissue IHC: 50-200 Positive control: Human prostate cancer Predicted cell location: Cytoplasm
Reactivity:	Human
Host:	Rabbit
Isotype:	IgG
Clonality:	Polyclonal
Immunogen:	Synthetic peptide of human CYP1A2
Formulation:	pH7.4 PBS, 0.05% NaN ₃ , 40% Glycerol
Concentration:	lot specific
Purification:	Antigen affinity purification
Conjugation:	Unconjugated
Storage:	Store at -20°C as received.
Stability:	Stable for 12 months from date of receipt.
Predicted Protein Size:	58 kDa
Gene Name:	cytochrome P450 family 1 subfamily A member 2
Database Link:	NP_000752 Entrez Gene 1544 Human P05177



[View online »](#)

Background:

This gene encodes a member of the cytochrome P450 superfamily of enzymes. The cytochrome P450 proteins are monooxygenases which catalyze many reactions involved in drug metabolism and synthesis of cholesterol, steroids and other lipids. The protein encoded by this gene localizes to the endoplasmic reticulum and its expression is induced by some polycyclic aromatic hydrocarbons (PAHs), some of which are found in cigarette smoke. The enzyme's endogenous substrate is unknown; however, it is able to metabolize some PAHs to carcinogenic intermediates. Other xenobiotic substrates for this enzyme include caffeine, aflatoxin B1, and acetaminophen. The transcript from this gene contains four Alu sequences flanked by direct repeats in the 3' untranslated region.

Synonyms:

CP12; P3-450; P450(PA)

Protein Families:

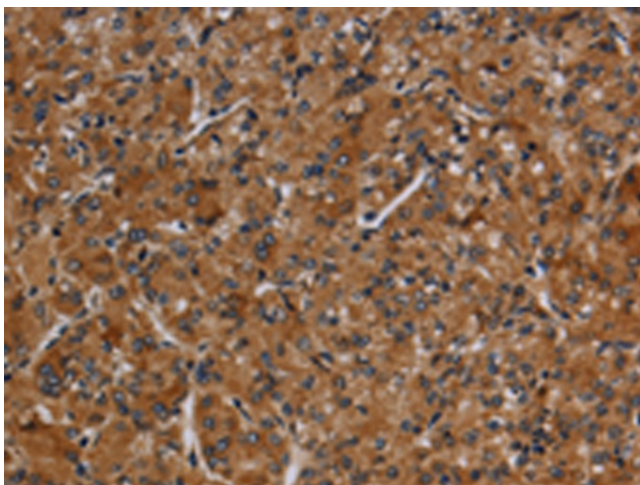
Druggable Genome, P450, Transmembrane

Protein Pathways:

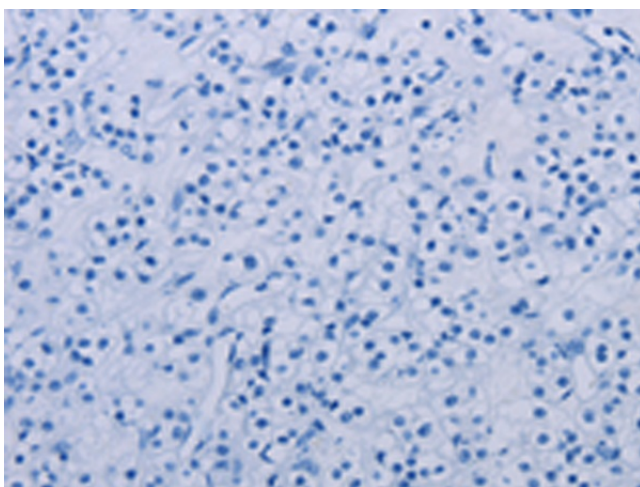
Caffeine metabolism, Drug metabolism - cytochrome P450, Linoleic acid metabolism, Metabolic pathways, Metabolism of xenobiotics by cytochrome P450, Retinol metabolism, Tryptophan metabolism

Product images:

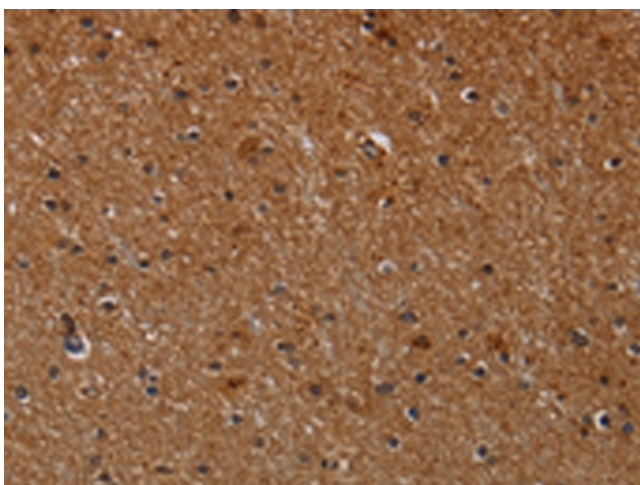
Gel: 6%SDS-PAGE
Lysate: 40 µg
Lane: Human hepatocellular carcinoma tissue
Primary antibody: TA351484 (CYP1A2 Antibody) at dilution 1/440
Secondary antibody: Goat anti rabbit IgG at 1/8000 dilution
Exposure time: 3 minutes



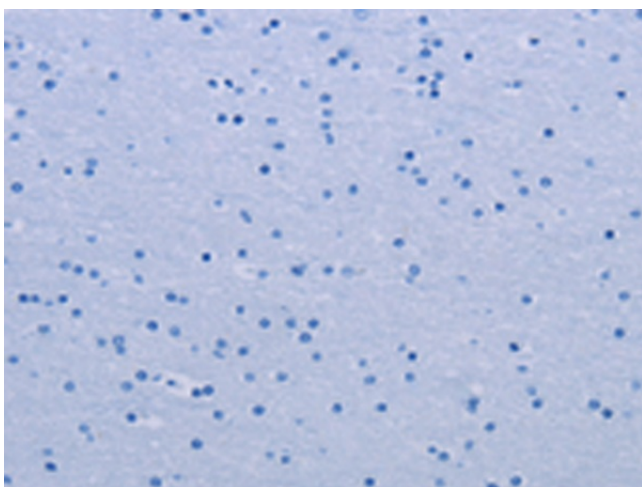
Immunohistochemistry of paraffin-embedded Human prostate cancer tissue using TA351484 (CYP1A2 Antibody) at dilution 1/40 (Original magnification: $\times 200$)



Immunohistochemistry of paraffin-embedded Human prostate cancer tissue using TA351484 (CYP1A2 Antibody) at dilution 1/40, treated with synthetic peptide. (Original magnification: $\times 200$)



Immunohistochemistry of paraffin-embedded Human brain tissue using TA351484 (CYP1A2 Antibody) at dilution 1/40 (Original magnification: $\times 200$)



Immunohistochemistry of paraffin-embedded Human brain tissue using TA351484 (CYP1A2 Antibody) at dilution 1/40, treated with synthetic peptide. (Original magnification: $\times 200$)