

## Product datasheet for **TA351483S**

### CYP1A1 Rabbit Polyclonal Antibody

#### Product data:

Product Type:	Primary Antibodies
Applications:	WB
Recommended Dilution:	WB: 200-1000 WB positive control: Mouse lung tissue
Reactivity:	Human, Mouse, Rat
Host:	Rabbit
Isotype:	IgG
Clonality:	Polyclonal
Immunogen:	Synthetic peptide of human CYP1A1
Formulation:	pH7.4 PBS, 0.05% NaN <sub>3</sub> , 40% Glycerol
Purification:	Antigen affinity purification
Conjugation:	Unconjugated
Storage:	Store at -20°C as received.
Stability:	Stable for 12 months from date of receipt.
Predicted Protein Size:	58 kDa
Gene Name:	cytochrome P450 family 1 subfamily A member 1
Database Link:	<a href="#">NP_000490</a> <a href="#">Entrez Gene 13076 Mouse</a> <a href="#">Entrez Gene 24296 Rat</a> <a href="#">Entrez Gene 1543 Human</a> <a href="#">P04798</a>

**Background:** This gene, CYP1A1, encodes a member of the cytochrome P450 superfamily of enzymes. The cytochrome P450 proteins are monooxygenases which catalyze many reactions involved in drug metabolism and synthesis of cholesterol, steroids and other lipids. This protein localizes to the endoplasmic reticulum and its expression is induced by some polycyclic aromatic hydrocarbons (PAHs), some of which are found in cigarette smoke. The enzyme's endogenous substrate is unknown; however, it is able to metabolize some PAHs to carcinogenic intermediates. The gene has been associated with lung cancer risk. A related family member, CYP1A2, is located approximately 25 kb away from CYP1A1 on chromosome 15.



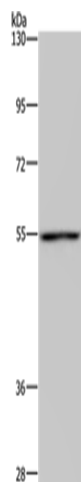
[View online »](#)

**Synonyms:** AHH; AHRR; CP11; CYP1; CYP1A1; P1-450; P450-C; P450DX

**Protein Families:** Druggable Genome, P450, Transmembrane

**Protein Pathways:** Metabolism of xenobiotics by cytochrome P450, Retinol metabolism, Tryptophan metabolism

**Product images:**



Gel: 6%SDS-PAGE  
Lysate: 40 µg  
Lane: Mouse lung tissue  
Primary antibody: [TA351483] (CYP1A1 Antibody)  
at dilution 1/220  
Secondary antibody: Goat anti rabbit IgG at  
1/8000 dilution  
Exposure time: 30 seconds