

Product datasheet for **TA351481**

MMP9 Rabbit Polyclonal Antibody

Product data:

Product Type:	Primary Antibodies
Applications:	IHC, WB
Recommended Dilution:	WB: 200-1000 WB positive control: MCF7 cell lysate IHC: 50-100 Positive control: Human colorectal cancer Predicted cell location: secreted
Reactivity:	Human
Host:	Rabbit
Isotype:	IgG
Clonality:	Polyclonal
Immunogen:	Synthetic peptide of human MMP9
Formulation:	pH7.4 PBS, 0.05% NaN ₃ , 40% Glycerol
Concentration:	lot specific
Purification:	Antigen affinity purification
Conjugation:	Unconjugated
Storage:	Store at -20°C as received.
Stability:	Stable for 12 months from date of receipt.
Predicted Protein Size:	78 kDa
Gene Name:	matrix metalloproteinase 9
Database Link:	NP_004985 Entrez Gene 4318 Human P14780



[View online »](#)

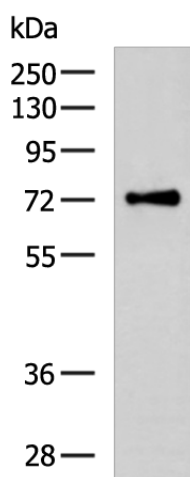
Background: Proteins of the matrix metalloproteinase (MMP) family are involved in the breakdown of extracellular matrix in normal physiological processes, such as embryonic development, reproduction, and tissue remodeling, as well as in disease processes, such as arthritis and metastasis. Most MMP's are secreted as inactive proproteins which are activated when cleaved by extracellular proteinases. The enzyme encoded by this gene degrades type IV and V collagens.

Synonyms: CLG4B; GELB; MANDP2; MMP-9

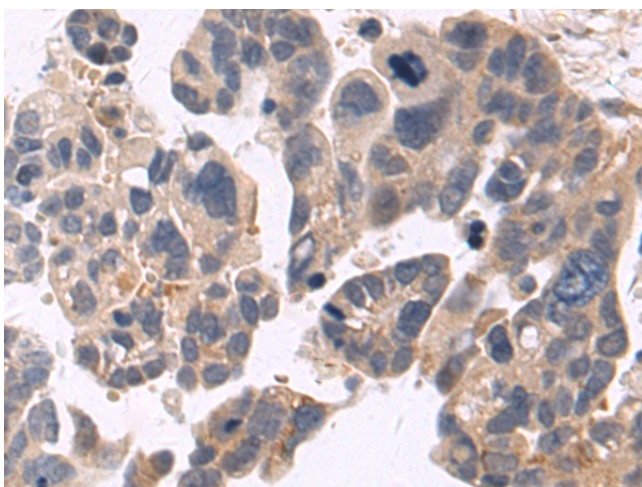
Protein Families: Druggable Genome, Protease

Protein Pathways: Bladder cancer, Leukocyte transendothelial migration, Pathways in cancer

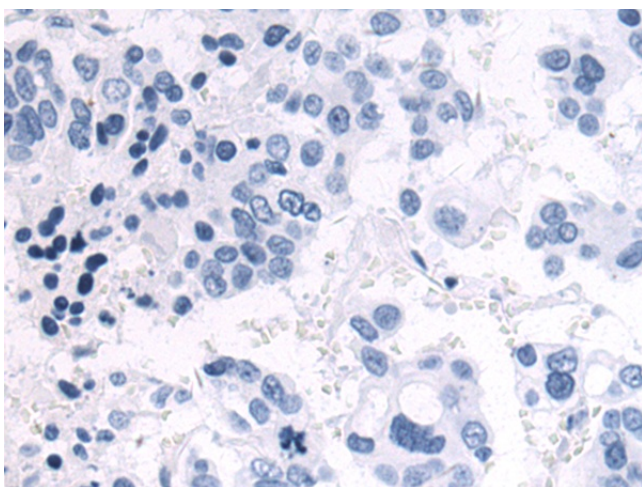
Product images:



Gel: 8%SDS-PAGE
Lysate: 40 μ g
Lane: MCF7 cell lysate
Primary antibody: TA351481 (MMP9 Antibody) at dilution 1/200
Secondary antibody: Goat anti rabbit IgG at 1/5000 dilution
Exposure time: 1 minute



Immunohistochemistry of paraffin-embedded Human colorectal cancer tissue using TA351481 (MMP9 Antibody) at dilution 1/50 (Original magnification: \times 200)



Immunohistochemistry of paraffin-embedded Human colorectal cancer tissue using TA351481 (MMP9 Antibody) at dilution 1/50, treated with synthetic peptide. (Original magnification: $\times 200$)