

Product datasheet for **TA351480**

P2Y2 (P2RY2) Rabbit Polyclonal Antibody

Product data:

Product Type:	Primary Antibodies
Applications:	IHC, WB
Recommended Dilution:	WB: 200-1000 WB positive control: HT-29 cells IHC: 25-100 Positive control: Human liver cancer Predicted cell location: Cytoplasm and Cell membrane
Reactivity:	Human, Mouse, Rat
Host:	Rabbit
Isotype:	IgG
Clonality:	Polyclonal
Immunogen:	Synthetic peptide of human P2RY2
Formulation:	pH7.4 PBS, 0.05% NaN ₃ , 40% Glycerol
Concentration:	lot specific
Purification:	Antigen affinity purification
Conjugation:	Unconjugated
Storage:	Store at -20°C as received.
Stability:	Stable for 12 months from date of receipt.
Predicted Protein Size:	42 kDa
Gene Name:	purinergic receptor P2Y2
Database Link:	NP_788086 Entrez Gene 18442 Mouse Entrez Gene 29597 Rat Entrez Gene 5029 Human P41231
Background:	The product of this gene belongs to the family of P2 receptors, which is activated by extracellular nucleotides and subdivided into P2X ligand-gated ion channels and P2Y G-protein coupled receptors. This family has several receptor subtypes with different pharmacological selectivity, which overlaps in some cases, for various adenosine and uridine nucleotides.



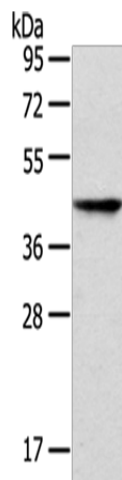
[View online »](#)

Synonyms: HP2U; P2RU1; P2U; P2U1; P2UR; P2Y2; P2Y2R

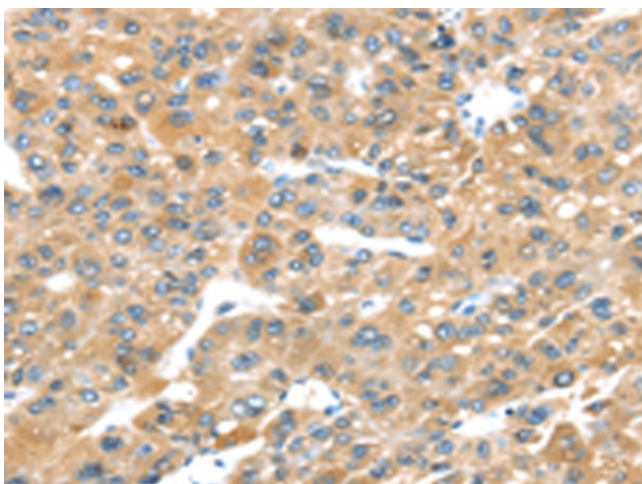
Protein Families: Druggable Genome, GPCR, Transmembrane

Protein Pathways: Neuroactive ligand-receptor interaction

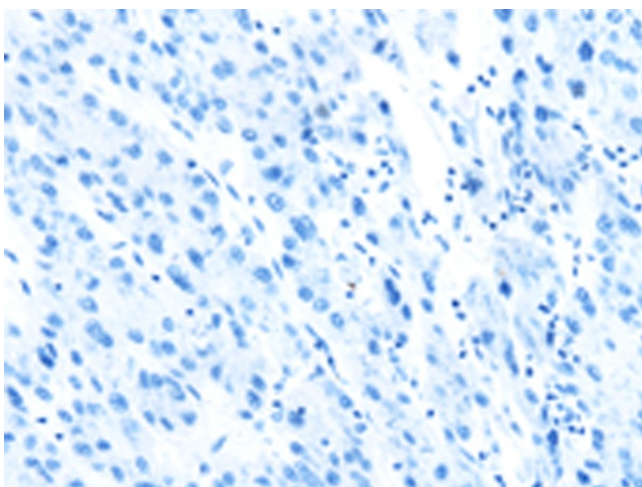
Product images:



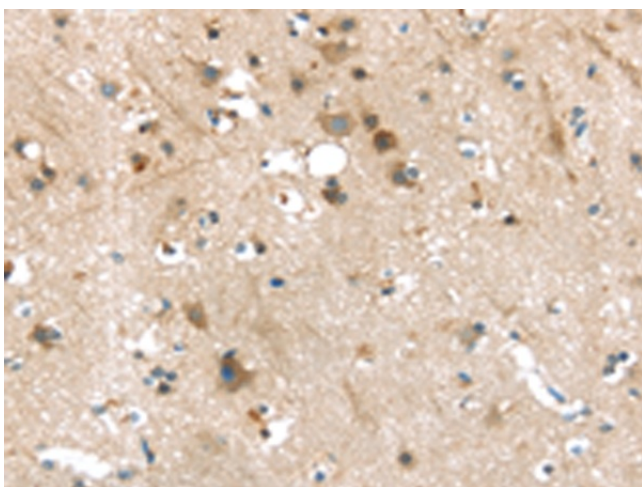
Gel: 8%SDS-PAGE
Lysate: 40 μ g
Lane: HT-29 cells
Primary antibody: TA351480 (P2RY2 Antibody) at dilution 1/200
Secondary antibody: Goat anti rabbit IgG at 1/8000 dilution
Exposure time: 30 seconds



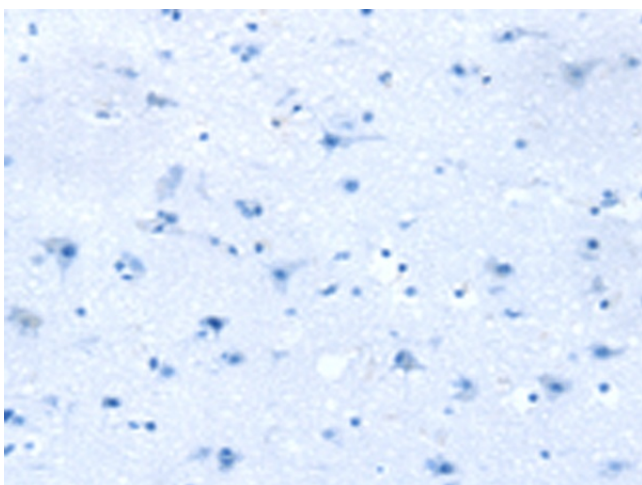
Immunohistochemistry of paraffin-embedded Human liver cancer tissue using TA351480 (P2RY2 Antibody) at dilution 1/30 (Original magnification: \times 200)



Immunohistochemistry of paraffin-embedded Human liver cancer tissue using TA351480 (P2RY2 Antibody) at dilution 1/30, treated with synthetic peptide. (Original magnification: ×200)



Immunohistochemistry of paraffin-embedded Human brain tissue using TA351480 (P2RY2 Antibody) at dilution 1/30 (Original magnification: ×200)



Immunohistochemistry of paraffin-embedded Human brain tissue using TA351480 (P2RY2 Antibody) at dilution 1/30, treated with synthetic peptide. (Original magnification: ×200)