

## Product datasheet for **TA351479S**

### **P2X2 (P2RX2) Rabbit Polyclonal Antibody**

#### **Product data:**

Product Type:	Primary Antibodies
Applications:	IHC, WB
Recommended Dilution:	WB: 500-2000 WB positive control: Mouse brain tissue IHC: 50-200 Positive control: Human thyroid cancer Predicted cell location: Cytoplasm
Reactivity:	Human, Mouse
Host:	Rabbit
Isotype:	IgG
Clonality:	Polyclonal
Immunogen:	Synthetic peptide of human P2RX2
Formulation:	pH7.4 PBS, 0.05% NaN <sub>3</sub> , 40% Glycerol
Purification:	Antigen affinity purification
Conjugation:	Unconjugated
Storage:	Store at -20°C as received.
Stability:	Stable for 12 months from date of receipt.
Predicted Protein Size:	52 kDa
Gene Name:	purinergic receptor P2X 2
Database Link:	<a href="#">NP_733782</a> <a href="#">Entrez Gene 231602 Mouse</a> <a href="#">Entrez Gene 22953 Human</a> <a href="#">Q9UBL9</a>
Background:	The product of this gene belongs to the family of purinoceptors for ATP. This receptor functions as a ligand-gated ion channel. Binding to ATP mediates synaptic transmission between neurons and from neurons to smooth muscle. Multiple transcript variants encoding distinct isoforms have been identified for this gene.
Synonyms:	DFNA41; P2X2
Protein Families:	Druggable Genome, Ion Channels: ATP Receptors, Transmembrane



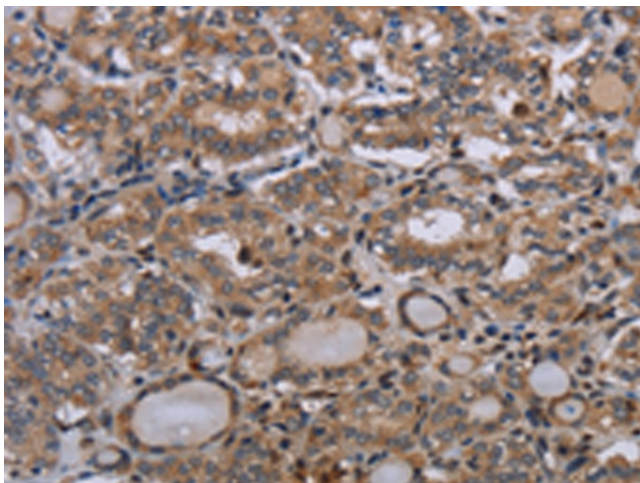
[View online »](#)

Protein Pathways: Calcium signaling pathway, Neuroactive ligand-receptor interaction

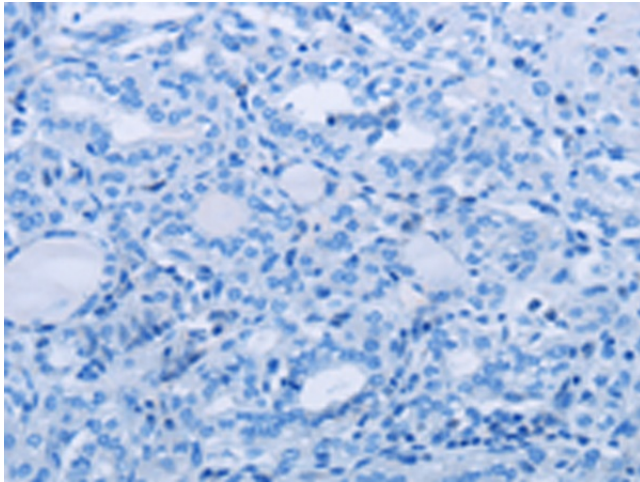
### Product images:



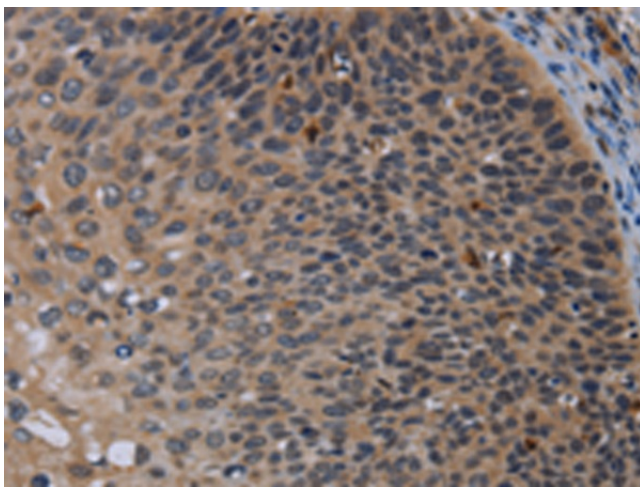
Gel: 8%SDS-PAGE  
Lysate: 40  $\mu$ g  
Lane: Mouse brain tissue  
Primary antibody: [TA351479] (P2RX2 Antibody)  
at dilution 1/300  
Secondary antibody: Goat anti rabbit IgG at  
1/8000 dilution  
Exposure time: 1 minute



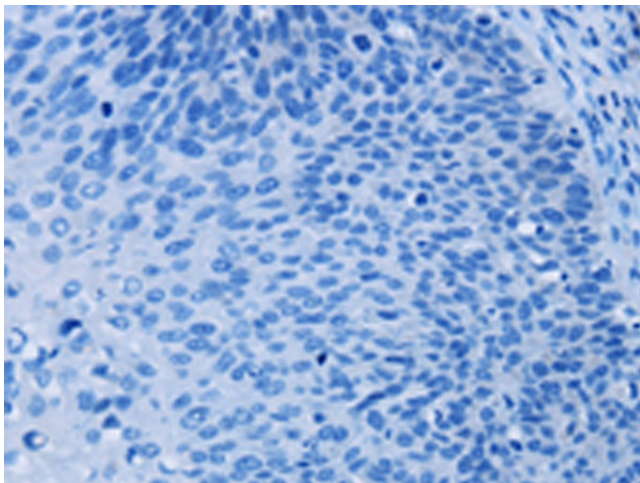
Immunohistochemistry of paraffin-embedded  
Human thyroid cancer tissue using [TA351479]  
(P2RX2 Antibody) at dilution 1/50 (Original  
magnification:  $\times$ 200)



Immunohistochemistry of paraffin-embedded Human thyroid cancer tissue using [TA351479] (P2RX2 Antibody) at dilution 1/50, treated with synthetic peptide. (Original magnification:  $\times 200$ )



Immunohistochemistry of paraffin-embedded Human cervical cancer tissue using [TA351479] (P2RX2 Antibody) at dilution 1/50 (Original magnification:  $\times 200$ )



Immunohistochemistry of paraffin-embedded Human cervical cancer tissue using [TA351479] (P2RX2 Antibody) at dilution 1/50, treated with synthetic peptide. (Original magnification:  $\times 200$ )