

## Product datasheet for **TA351478**

### **P2X3 (P2RX3) Rabbit Polyclonal Antibody**

#### **Product data:**

Product Type:	Primary Antibodies
Applications:	IHC, WB
Recommended Dilution:	WB: 200-1000 WB positive control: Human bladder and bladder transitional cells carcinoma tissue IHC: 25-100 Positive control: Human thyroid cancer Predicted cell location: Cytoplasm
Reactivity:	Human
Host:	Rabbit
Isotype:	IgG
Clonality:	Polyclonal
Immunogen:	Synthetic peptide of human P2RX3
Formulation:	pH7.4 PBS, 0.05% NaN <sub>3</sub> , 40% Glycerol
Concentration:	lot specific
Purification:	Antigen affinity purification
Conjugation:	Unconjugated
Storage:	Store at -20°C as received.
Stability:	Stable for 12 months from date of receipt.
Predicted Protein Size:	44 kDa
Gene Name:	purinergic receptor P2X 3
Database Link:	<a href="#">NP_002550</a> <a href="#">Entrez Gene 5024 Human</a> <a href="#">P56373</a>



[View online »](#)

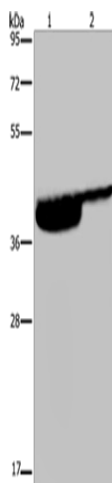
**Background:** The product of this gene belongs to the family of purinoceptors for ATP. This receptor functions as a ligand-gated ion channel and may transduce ATP-evoked nociceptor activation. Mouse studies suggest that this receptor is important for peripheral pain responses, and also participates in pathways controlling urinary bladder volume reflexes. It is possible that the development of selective antagonists for this receptor may have a therapeutic potential in pain relief and in the treatment of disorders of urine storage.

**Synonyms:** P2X3

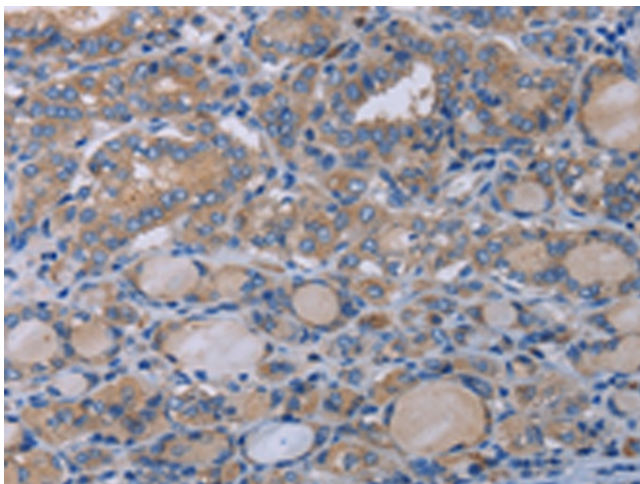
**Protein Families:** Druggable Genome, Ion Channels: ATP Receptors, Transmembrane

**Protein Pathways:** Calcium signaling pathway, Neuroactive ligand-receptor interaction

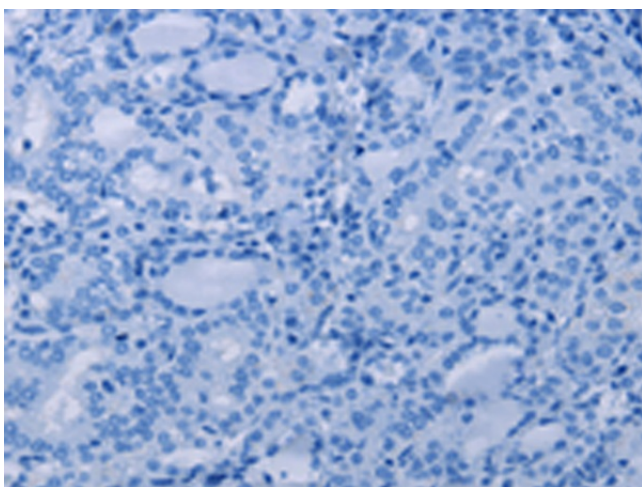
### Product images:



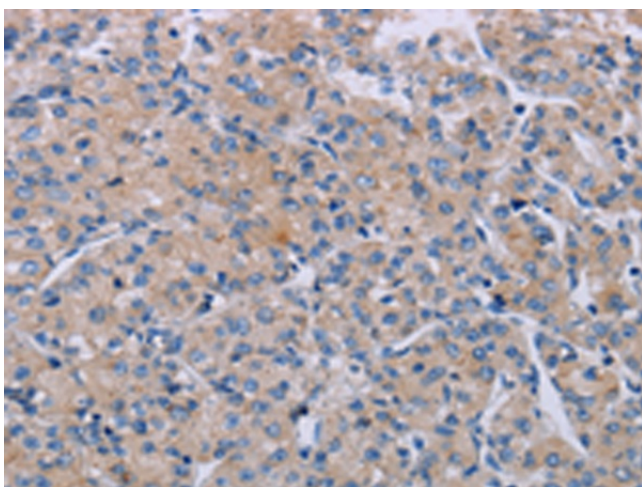
Gel: 8%SDS-PAGE  
Lysate: 40 µg  
Lane 1-2: Human bladder tissue  
Human bladder transitional cell carcinoma tissue  
Primary antibody: TA351478 (P2RX3 Antibody) at dilution 1/250  
Secondary antibody: Goat anti rabbit IgG at 1/8000 dilution  
Exposure time: 10 minutes



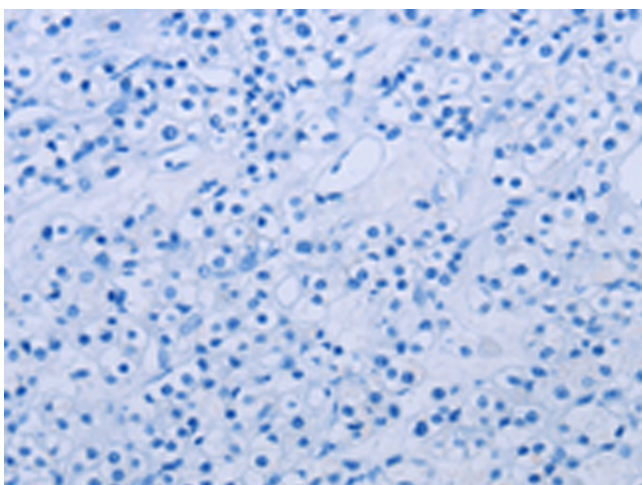
Immunohistochemistry of paraffin-embedded Human thyroid cancer tissue using TA351478 (P2RX3 Antibody) at dilution 1/50 (Original magnification: ×200)



Immunohistochemistry of paraffin-embedded Human thyroid cancer tissue using TA351478 (P2RX3 Antibody) at dilution 1/50, treated with synthetic peptide. (Original magnification: ×200)



Immunohistochemistry of paraffin-embedded Human prostate cancer tissue using TA351478 (P2RX3 Antibody) at dilution 1/50 (Original magnification: ×200)



Immunohistochemistry of paraffin-embedded Human prostate cancer tissue using TA351478 (P2RX3 Antibody) at dilution 1/50, treated with synthetic peptide. (Original magnification: ×200)