

## Product datasheet for **TA351470**

### SLC22A2 Rabbit Polyclonal Antibody

#### Product data:

Product Type:	Primary Antibodies
Applications:	IHC, WB
Recommended Dilution:	WB: 500-2000 WB positive control: 293T cells IHC: 50-200 Positive control: Human esophagus cancer Predicted cell location: Cytoplasm
Reactivity:	Human, Rat
Host:	Rabbit
Isotype:	IgG
Clonality:	Polyclonal
Immunogen:	Synthetic peptide of human SLC22A2
Formulation:	pH7.4 PBS, 0.05% NaN <sub>3</sub> , 40% Glycerol
Concentration:	lot specific
Purification:	Antigen affinity purification
Conjugation:	Unconjugated
Storage:	Store at -20°C as received.
Stability:	Stable for 12 months from date of receipt.
Predicted Protein Size:	63 kDa
Gene Name:	solute carrier family 22 member 2
Database Link:	<a href="#">NP_003049</a> <a href="#">Entrez Gene 29503 Rat</a> <a href="#">Entrez Gene 6582 Human</a> <a href="#">O15244</a>



[View online »](#)

**Background:**

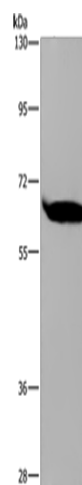
Polyspecific organic cation transporters in the liver, kidney, intestine, and other organs are critical for elimination of many endogenous small organic cations as well as a wide array of drugs and environmental toxins. This gene is one of three similar cation transporter genes located in a cluster on chromosome 6. The encoded protein contains twelve putative transmembrane domains and is a plasma integral membrane protein. It is found primarily in the kidney, where it may mediate the first step in cation reabsorption.

**Synonyms:**

OCT2

**Protein Families:**

Transmembrane

**Product images:**

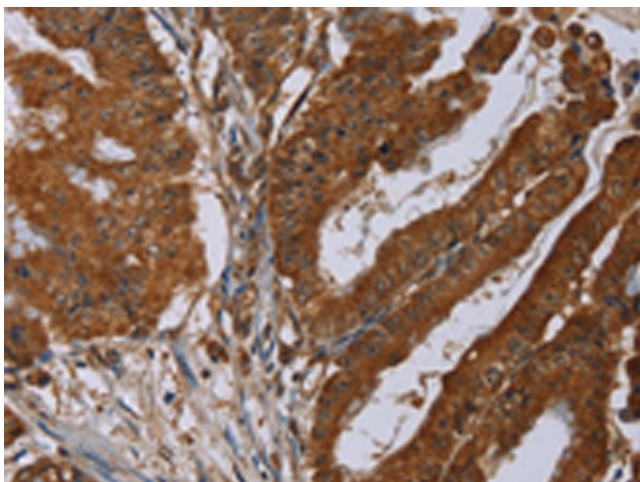
Gel: 6%SDS-PAGE

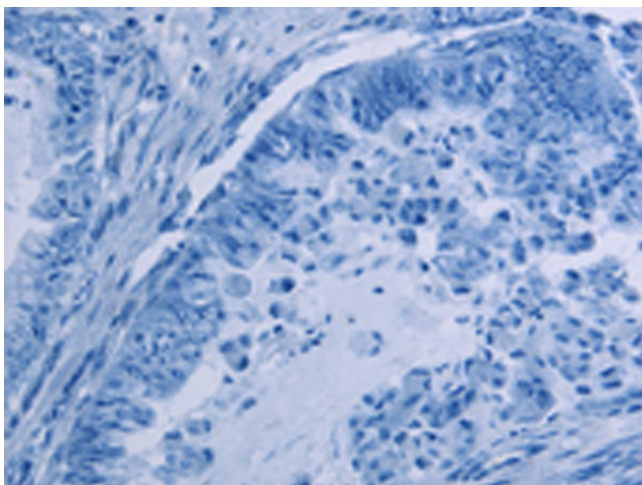
Lysate: 40 µg

Lane: 293T cells

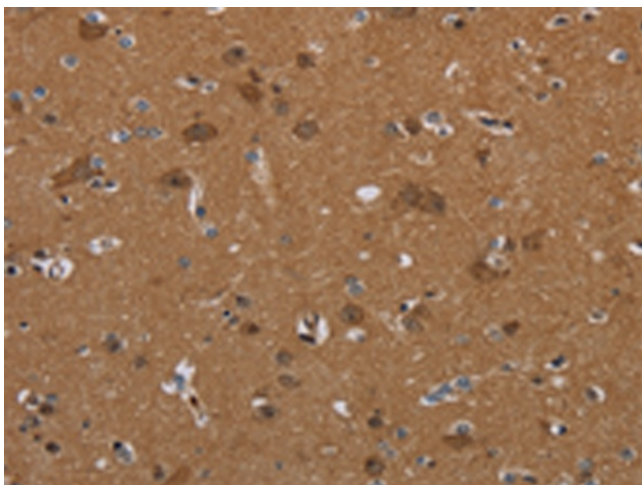
Primary antibody: TA351470 (SLC22A2 Antibody)  
at dilution 1/200Secondary antibody: Goat anti rabbit IgG at  
1/8000 dilution

Exposure time: 20 seconds

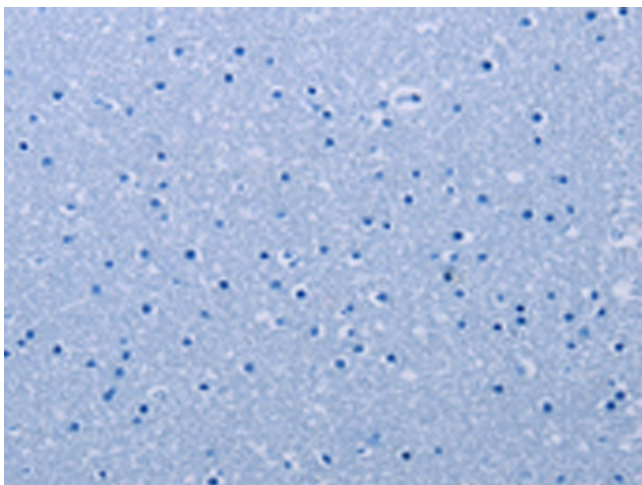
Immunohistochemistry of paraffin-embedded  
Human esophagus cancer tissue using TA351470  
(SLC22A2 Antibody) at dilution 1/30 (Original  
magnification: ×200)



Immunohistochemistry of paraffin-embedded Human esophagus cancer tissue using TA351470 (SLC22A2 Antibody) at dilution 1/30, treated with synthetic peptide. (Original magnification: ×200)



Immunohistochemistry of paraffin-embedded Human brain tissue using TA351470 (SLC22A2 Antibody) at dilution 1/30 (Original magnification: ×200)



Immunohistochemistry of paraffin-embedded Human brain tissue using TA351470 (SLC22A2 Antibody) at dilution 1/30, treated with synthetic peptide. (Original magnification: ×200)