

## Product datasheet for **TA351469S**

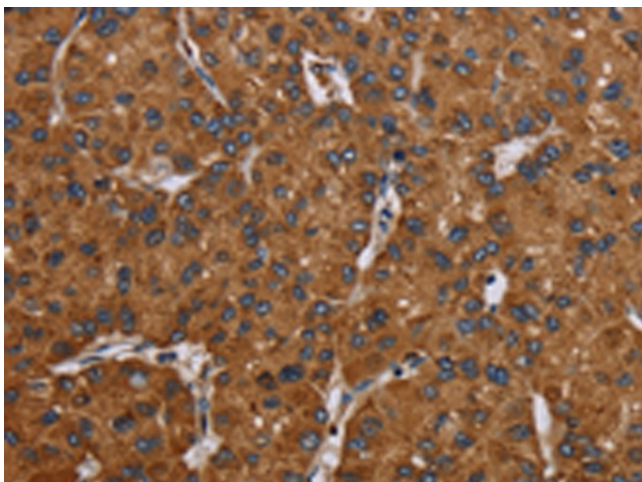
### **OCC1 (C12orf75) Rabbit Polyclonal Antibody**

#### **Product data:**

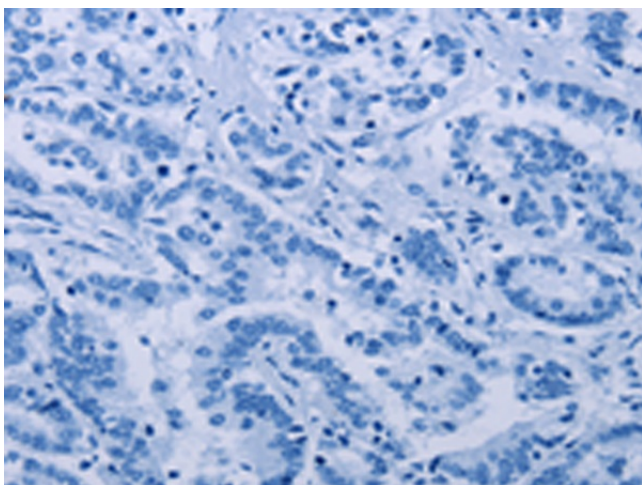
Product Type:	Primary Antibodies
Applications:	IHC
Recommended Dilution:	IHC: 25-100 Positive control: Human liver cancer Predicted cell location: Cytoplasm
Reactivity:	Human
Host:	Rabbit
Isotype:	IgG
Clonality:	Polyclonal
Immunogen:	Synthetic peptide of human C12orf75
Formulation:	pH7.4 PBS, 0.05% NaN <sub>3</sub> , 40% Glycerol
Purification:	Antigen affinity purification
Conjugation:	Unconjugated
Storage:	Store at -20°C as received.
Stability:	Stable for 12 months from date of receipt.
Gene Name:	chromosome 12 open reading frame 75
Database Link:	<a href="#">NP_001138671</a> <a href="#">Entrez Gene 387882 Human</a> <a href="#">Q8TAD7</a>
Background:	C12orf75 (chromosome 12 open reading frame 75), also known as AGD3 or OCC1, is a protein that in humans is encoded by the C12orf75 gene. C12orf75 is high expression in placenta, skeletal muscle, kidney and pancreas tissues.
Synonyms:	AGD3; OCC-1; OCC1

[View online »](#)

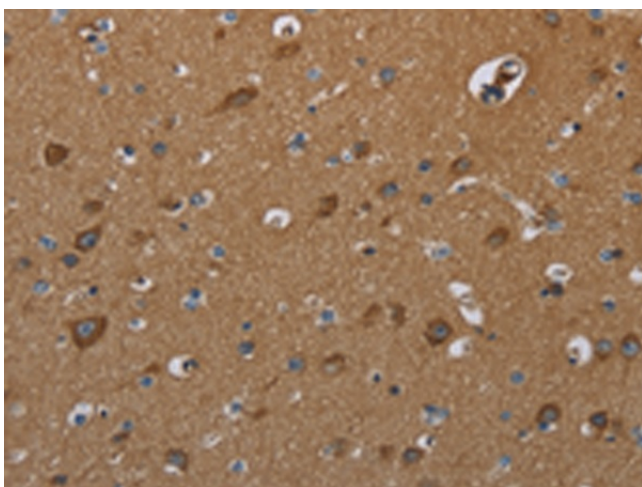
## Product images:



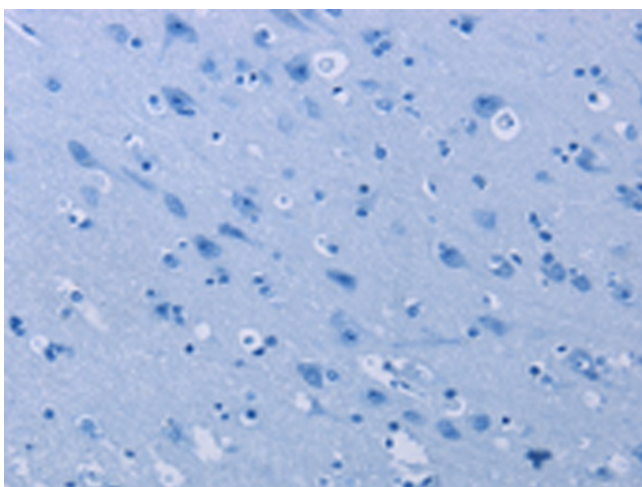
Immunohistochemistry of paraffin-embedded Human liver cancer tissue using [TA351469] (C12orf75 Antibody) at dilution 1/20 (Original magnification: ×200)



Immunohistochemistry of paraffin-embedded Human liver cancer tissue using [TA351469] (C12orf75 Antibody) at dilution 1/20, treated with synthetic peptide. (Original magnification: ×200)



Immunohistochemistry of paraffin-embedded Human brain tissue using [TA351469] (C12orf75 Antibody) at dilution 1/20 (Original magnification: ×200)



Immunohistochemistry of paraffin-embedded Human brain tissue using [TA351469] (C12orf75 Antibody) at dilution 1/20, treated with synthetic peptide. (Original magnification: ×200)