

## Product datasheet for **TA351467S**

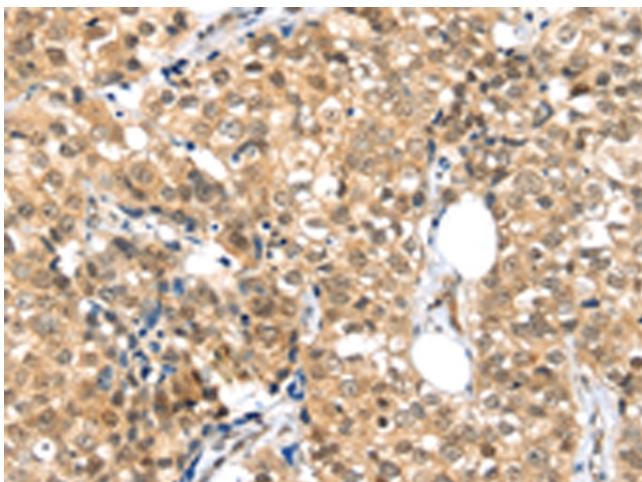
### TPR Rabbit Polyclonal Antibody

#### Product data:

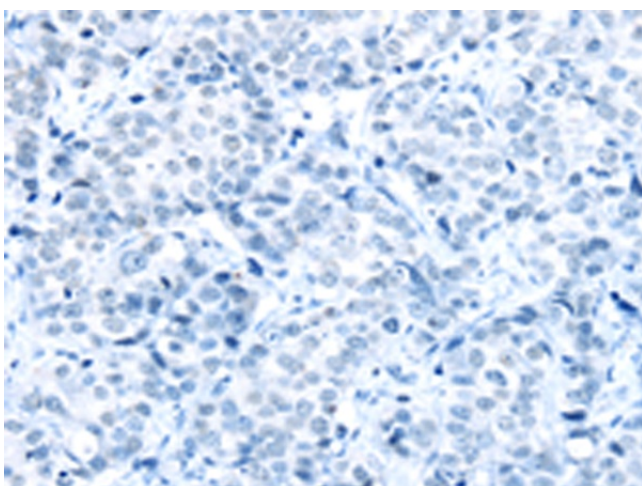
Product Type:	Primary Antibodies
Applications:	IHC
Recommended Dilution:	IHC: 25-100 Positive control: Human breast cancer Predicted cell location: Nucleus and Cell membrane
Reactivity:	Human, Mouse, Rat
Host:	Rabbit
Isotype:	IgG
Clonality:	Polyclonal
Immunogen:	Synthetic peptide of human TPR
Formulation:	pH7.4 PBS, 0.05% NaN <sub>3</sub> , 40% Glycerol
Purification:	Antigen affinity purification
Conjugation:	Unconjugated
Storage:	Store at -20°C as received.
Stability:	Stable for 12 months from date of receipt.
Gene Name:	translocated promoter region, nuclear basket protein
Database Link:	<a href="#">NP_003283</a> <a href="#">Entrez Gene 108989 Mouse</a> <a href="#">Entrez Gene 304862 Rat</a> <a href="#">Entrez Gene 7175 Human</a> <a href="#">P12270</a>
Background:	This gene encodes a large coiled-coil protein that forms intranuclear filaments attached to the inner surface of nuclear pore complexes (NPCs). The protein directly interacts with several components of the NPC. It is required for the nuclear export of mRNAs and some proteins. Oncogenic fusions of the 5' end of this gene with several different kinase genes occur in some neoplasias.
Synonyms:	nuclear pore complex-associated protein TPR; nucleoprotein TPR; OTTHUMP00000033584; translocated promoter region (to activated MET oncogene); tumor potentiating region
Protein Pathways:	Pathways in cancer, Thyroid cancer



[View online »](#)

**Product images:**

Immunohistochemistry of paraffin-embedded Human breast cancer tissue using [TA351467] (TPR Antibody) at dilution 1/20 (Original magnification: ×200)



Immunohistochemistry of paraffin-embedded Human breast cancer tissue using [TA351467] (TPR Antibody) at dilution 1/20, treated with synthetic peptide. (Original magnification: ×200)