

Product datasheet for **TA351464**

NRF1 Rabbit Polyclonal Antibody

Product data:

Product Type:	Primary Antibodies
Applications:	WB
Recommended Dilution:	WB: 500-2000 WB positive control: Hela cells
Reactivity:	Human, Mouse
Host:	Rabbit
Isotype:	IgG
Clonality:	Polyclonal
Immunogen:	Synthetic peptide of human NRF1
Formulation:	pH7.4 PBS, 0.05% NaN ₃ , 40% Glycerol
Concentration:	lot specific
Purification:	Antigen affinity purification
Conjugation:	Unconjugated
Storage:	Store at -20°C as received.
Stability:	Stable for 12 months from date of receipt.
Predicted Protein Size:	54 kDa
Gene Name:	nuclear respiratory factor 1
Database Link:	NP_005002 Entrez Gene 18181 Mouse Entrez Gene 4899 Human Q16656

Background: This gene encodes a protein that homodimerizes and functions as a transcription factor which activates the expression of some key metabolic genes regulating cellular growth and nuclear genes required for respiration, heme biosynthesis, and mitochondrial DNA transcription and replication. The protein has also been associated with the regulation of neurite outgrowth. Alternative splicing results in multiple transcript variants.

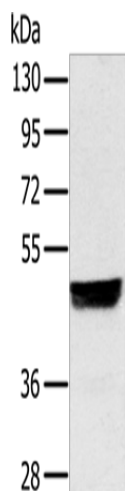
Synonyms: ALPHA-PAL
Protein Families: Transcription Factors



[View online »](#)

Protein Pathways: Huntington's disease

Product images:



Gel: 8%SDS-PAGE
Lysate: 30 μ g
Lane: HeLa cells
Primary antibody: TA351464 (NRF1 Antibody) at dilution 1/500
Secondary antibody: Goat anti rabbit IgG at 1/8000 dilution
Exposure time: 30 seconds