

Product datasheet for **TA351462**

NR2F2 Rabbit Polyclonal Antibody

Product data:

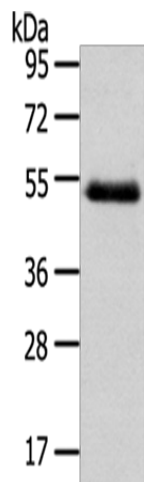
Product Type:	Primary Antibodies
Applications:	IHC, WB
Recommended Dilution:	WB: 500-2000 WB positive control: Human placenta tissue IHC: 25-100 Positive control: Human esophagus cancer Predicted cell location: Nucleus
Reactivity:	Human, Mouse, Rat
Host:	Rabbit
Isotype:	IgG
Clonality:	Polyclonal
Immunogen:	Synthetic peptide of human NR2F2
Formulation:	pH7.4 PBS, 0.05% NaN ₃ , 40% Glycerol
Concentration:	lot specific
Purification:	Antigen affinity purification
Conjugation:	Unconjugated
Storage:	Store at -20°C as received.
Stability:	Stable for 12 months from date of receipt.
Predicted Protein Size:	46 kDa
Gene Name:	nuclear receptor subfamily 2 group F member 2
Database Link:	NP_066285 Entrez Gene 11819 Mouse Entrez Gene 113984 Rat Entrez Gene 7026 Human P24468
Background:	This gene encodes a member of the steroid thyroid hormone superfamily of nuclear receptors. The encoded protein is a ligand inducible transcription factor that is involved in the regulation of many different genes. Alternate splicing results in multiple transcript variants.
Synonyms:	ARP1; CHTD4; COUPTFB; COUPTFII; NF-E3; NR2F1; SVP40; TFCOUP2



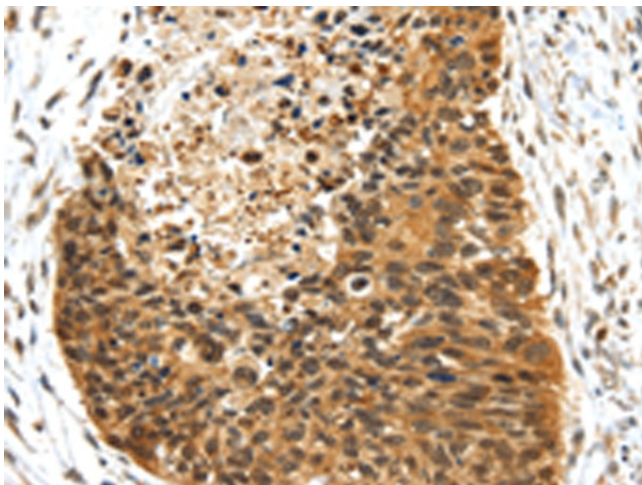
[View online »](#)

Protein Families: Druggable Genome, Nuclear Hormone Receptor, Transcription Factors

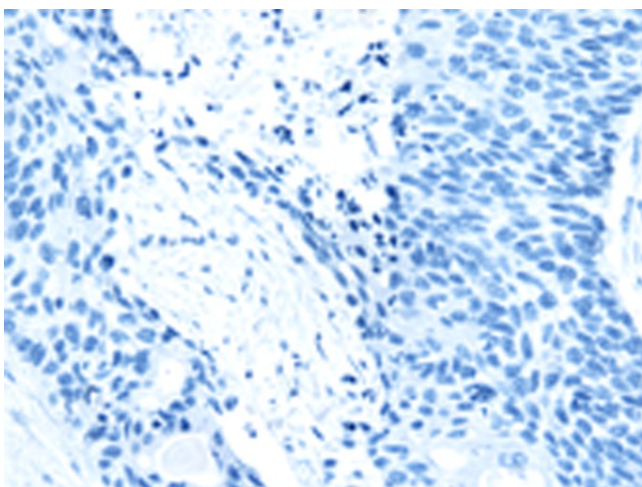
Product images:



Gel: 8%SDS-PAGE
Lysate: 40 μ g
Lane: Human placenta tissue
Primary antibody: TA351462 (NR2F2 Antibody) at dilution 1/200
Secondary antibody: Goat anti rabbit IgG at 1/8000 dilution
Exposure time: 1 minute



Immunohistochemistry of paraffin-embedded Human esophagus cancer tissue using TA351462 (NR2F2 Antibody) at dilution 1/25 (Original magnification: \times 200)



Immunohistochemistry of paraffin-embedded Human esophagus cancer tissue using TA351462 (NR2F2 Antibody) at dilution 1/25, treated with synthetic peptide. (Original magnification: $\times 200$)