

Product datasheet for **TA351460**

NPR2L (NPRL2) Rabbit Polyclonal Antibody

Product data:

Product Type:	Primary Antibodies
Applications:	IHC, WB
Recommended Dilution:	WB: 200-1000 WB positive control: Human fetal muscle and mouse skeletal muscle tissue IHC: 50-200 Positive control: Human esophagus cancer Predicted cell location: Cytoplasm
Reactivity:	Human, Mouse
Host:	Rabbit
Isotype:	IgG
Clonality:	Polyclonal
Immunogen:	Synthetic peptide of human NPR2L
Formulation:	pH7.4 PBS, 0.05% NaN ₃ , 40% Glycerol
Concentration:	lot specific
Purification:	Antigen affinity purification
Conjugation:	Unconjugated
Storage:	Store at -20°C as received.
Stability:	Stable for 12 months from date of receipt.
Predicted Protein Size:	44 kDa
Gene Name:	NPR2-like, GATOR1 complex subunit
Database Link:	NP_006536 Entrez Gene 56032 Mouse Entrez Gene 10641 Human Q8WTW4



[View online »](#)

Background:

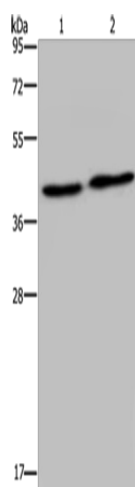
NPRL2, also known as TUSC4 (tumor suppressor candidate 4), is a 380 amino acid protein that contains a bipartite nuclear localization signal and a granulin protein-binding domain. It is highly expressed in skeletal muscle, followed by brain, liver and pancreas, with lower expression in lung, kidney, placenta and heart. NPRL2 is also expressed in most lung cancer cell lines and may be involved in tumor suppression. NPRL2 may play a role in mismatch repair, cell cycle checkpoint signaling and activation of apoptotic pathways. It may also enhance the therapeutic efficacy of chemotherapy drugs such as cis-platin by resensitizing patients resistant to cisplatin treatment. The gene encoding NPRL2 is conserved between species and is expressed as two isoforms due to alternative splicing events.

Synonyms:

FFEVF2; NPR2; NPR2L; TUSC4

Protein Families:

Druggable Genome

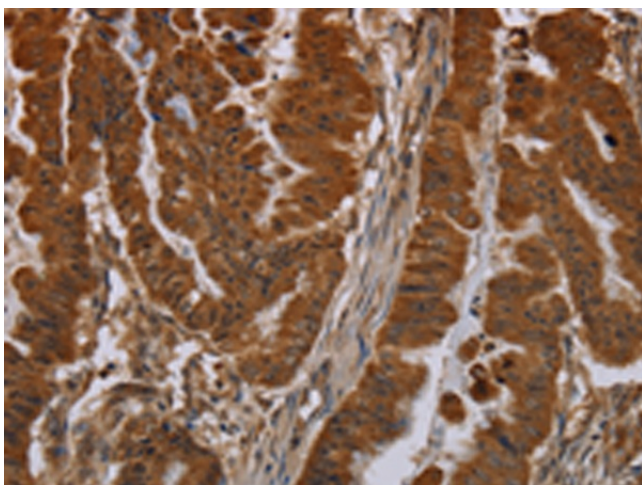
Product images:

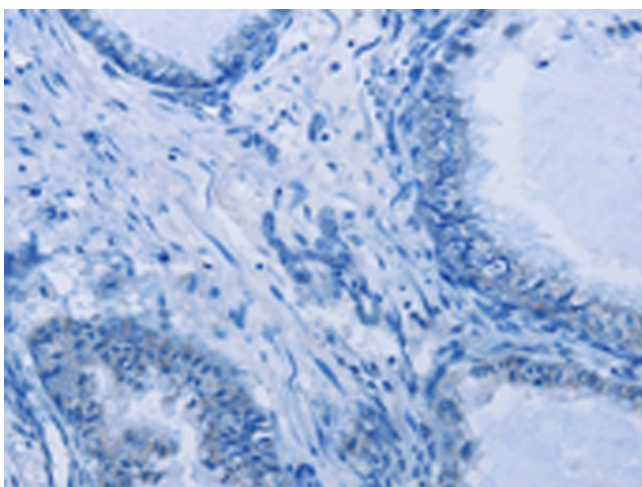
Gel: 10%SDS-PAGE

Lysate: 40 µg

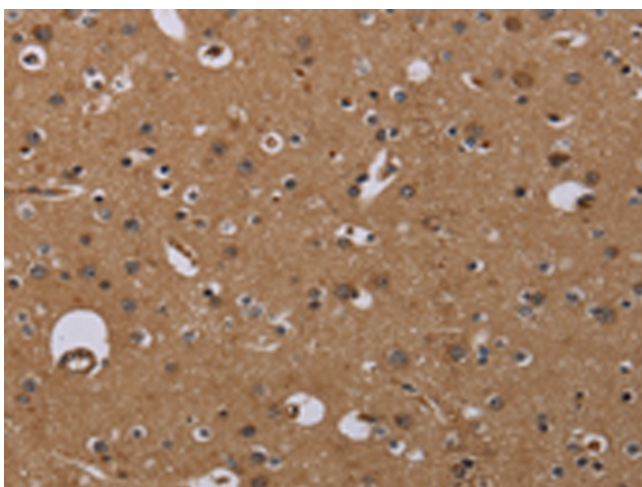
Lane 1-2: Human fetal muscle tissue
mouse skeletal muscle tissuePrimary antibody: TA351460 (NPRL2 Antibody) at
dilution 1/200Secondary antibody: Goat anti rabbit IgG at
1/8000 dilution

Exposure time: 1 minute

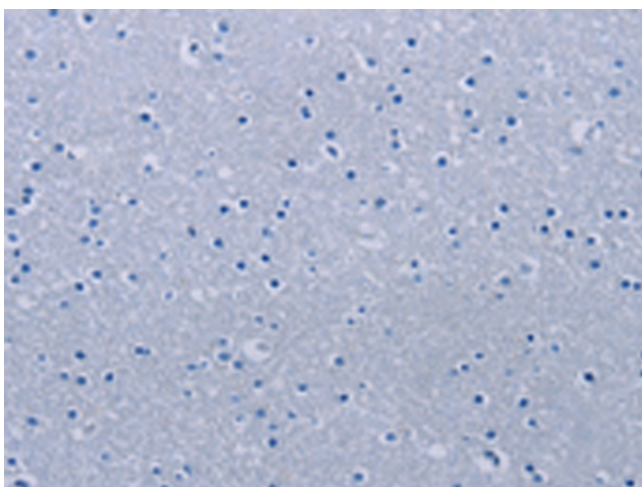
Immunohistochemistry of paraffin-embedded
Human esophagus cancer tissue using TA351460
(NPRL2 Antibody) at dilution 1/40 (Original
magnification: ×200)



Immunohistochemistry of paraffin-embedded Human esophagus cancer tissue using TA351460 (NPRL2 Antibody) at dilution 1/40, treated with synthetic peptide. (Original magnification: ×200)



Immunohistochemistry of paraffin-embedded Human brain tissue using TA351460 (NPRL2 Antibody) at dilution 1/40 (Original magnification: ×200)



Immunohistochemistry of paraffin-embedded Human brain tissue using TA351460 (NPRL2 Antibody) at dilution 1/40, treated with synthetic peptide. (Original magnification: ×200)