

Product datasheet for **TA351458**

Niemann Pick C1 (NPC1) Rabbit Polyclonal Antibody

Product data:

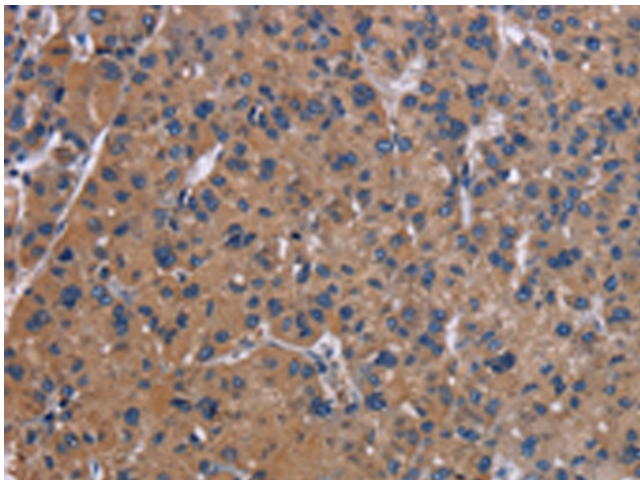
Product Type:	Primary Antibodies
Applications:	IHC
Recommended Dilution:	IHC: 25-100 Positive control: Human liver cancer Predicted cell location: Cytoplasm
Reactivity:	Human
Host:	Rabbit
Isotype:	IgG
Clonality:	Polyclonal
Immunogen:	Synthetic peptide of human NPC1
Formulation:	pH7.4 PBS, 0.05% NaN ₃ , 40% Glycerol
Concentration:	lot specific
Purification:	Antigen affinity purification
Conjugation:	Unconjugated
Storage:	Store at -20°C as received.
Stability:	Stable for 12 months from date of receipt.
Gene Name:	NPC intracellular cholesterol transporter 1
Database Link:	NP_000262 Entrez Gene 4864 Human O15118
Background:	This gene encodes a large protein that resides in the limiting membrane of endosomes and lysosomes and mediates intracellular cholesterol trafficking via binding of cholesterol to its N-terminal domain. It is predicted to have a cytoplasmic C-terminus, 13 transmembrane domains, and 3 large loops in the lumen of the endosome - the last loop being at the N-terminus. This protein transports low-density lipoproteins to late endosomal/lysosomal compartments where they are hydrolyzed and released as free cholesterol.
Synonyms:	NPC
Protein Families:	Druggable Genome, Transmembrane



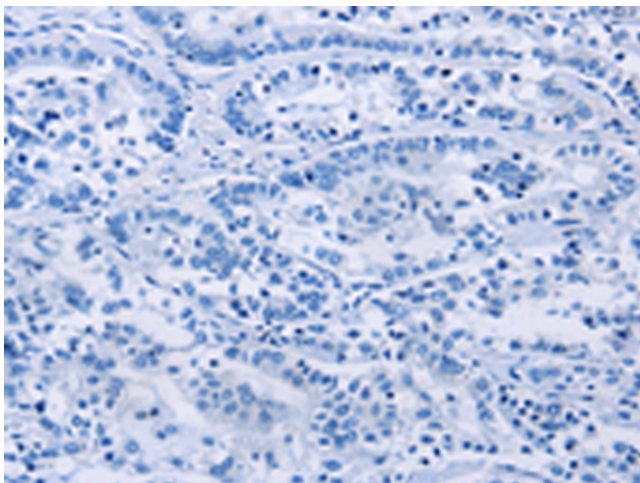
[View online »](#)

Protein Pathways: Lysosome

Product images:



Immunohistochemistry of paraffin-embedded Human liver cancer tissue using TA351458 (NPC1 Antibody) at dilution 1/40 (Original magnification: ×200)



Immunohistochemistry of paraffin-embedded Human liver cancer tissue using TA351458 (NPC1 Antibody) at dilution 1/40, treated with synthetic peptide. (Original magnification: ×200)