

## Product datasheet for **TA351443**

### RHEB Rabbit Polyclonal Antibody

#### Product data:

Product Type:	Primary Antibodies
Applications:	IHC, WB
Recommended Dilution:	WB: 500-2000 WB positive control: Human brain malignant glioma tissue, Jurkat, Raji and 231 cells, human fetal brain tissue and Hela cells IHC: 50-200 Positive control: Human liver cancer Predicted cell location: Cytoplasm
Reactivity:	Human, Mouse, Rat
Host:	Rabbit
Isotype:	IgG
Clonality:	Polyclonal
Immunogen:	Synthetic peptide of human RHEB
Formulation:	pH7.4 PBS, 0.05% NaN <sub>3</sub> , 40% Glycerol
Concentration:	lot specific
Purification:	Antigen affinity purification
Conjugation:	Unconjugated
Storage:	Store at -20°C as received.
Stability:	Stable for 12 months from date of receipt.
Predicted Protein Size:	20 kDa
Gene Name:	Ras homolog enriched in brain
Database Link:	<a href="#">NP_005605</a> <a href="#">Entrez Gene 19744 Mouse</a> <a href="#">Entrez Gene 26954 Rat</a> <a href="#">Entrez Gene 6009 Human</a> <a href="#">Q15382</a>



[View online »](#)

**Background:**

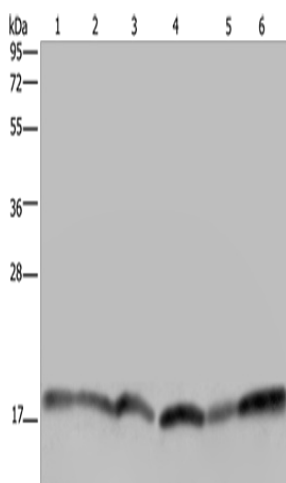
This gene is a member of the small GTPase superfamily and encodes a lipid-anchored, cell membrane protein with five repeats of the RAS-related GTP-binding region. This protein is vital in regulation of growth and cell cycle progression due to its role in the insulin/TOR/S6K signaling pathway. The protein has GTPase activity and shuttles between a GDP-bound form and a GTP-bound form, and farnesylation of the protein is required for this activity. Three pseudogenes have been mapped, two on chromosome 10 and one on chromosome 22.

**Synonyms:**

RHEB2

**Protein Pathways:**

Insulin signaling pathway, mTOR signaling pathway

**Product images:**

Gel: 10%SDS-PAGE

Lysate: 40 µg

Lane 1-6: Human brain malignant glioma tissue  
Jurkat cells

Raji cells

231 cells

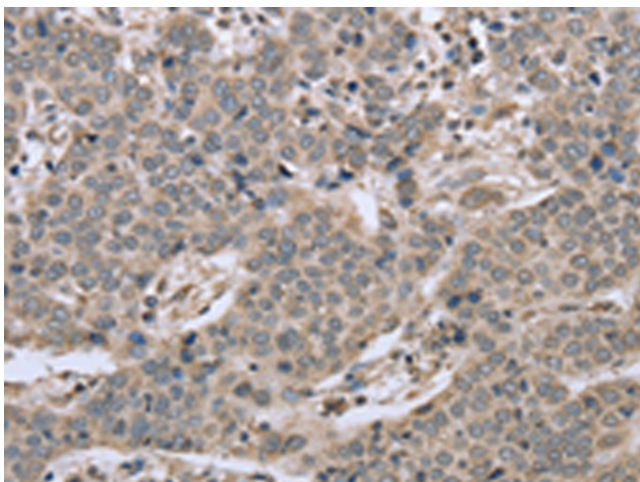
human fetal brain tissue

HeLa cells

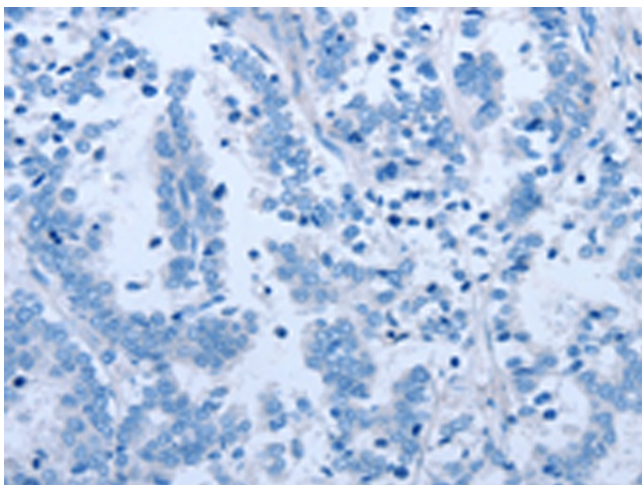
Primary antibody: TA351443 (RHEB Antibody) at dilution 1/300

Secondary antibody: Goat anti rabbit IgG at 1/8000 dilution

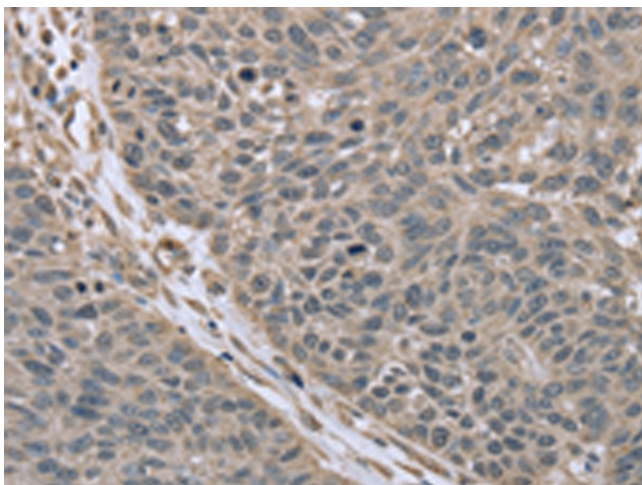
Exposure time: 5 seconds



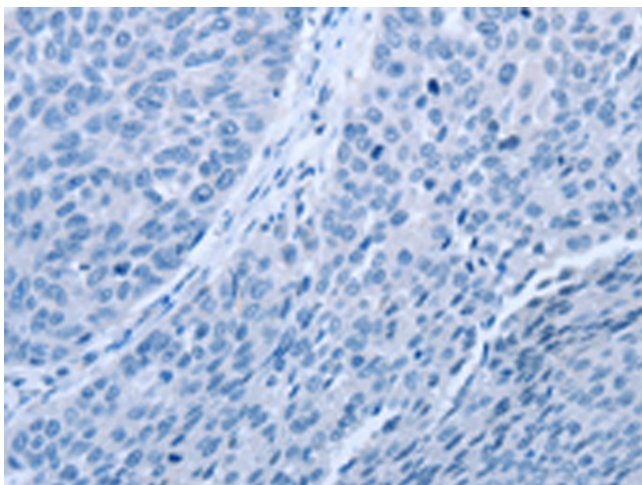
Immunohistochemistry of paraffin-embedded Human liver cancer tissue using TA351443 (RHEB Antibody) at dilution 1/40 (Original magnification: ×200)



Immunohistochemistry of paraffin-embedded Human liver cancer tissue using TA351443 (RHEB Antibody) at dilution 1/40, treated with synthetic peptide. (Original magnification: ×200)



Immunohistochemistry of paraffin-embedded Human lung cancer tissue using TA351443 (RHEB Antibody) at dilution 1/40 (Original magnification: ×200)



Immunohistochemistry of paraffin-embedded Human lung cancer tissue using TA351443 (RHEB Antibody) at dilution 1/40, treated with synthetic peptide. (Original magnification: ×200)