

Product datasheet for **TA351442**

RAB39B Rabbit Polyclonal Antibody

Product data:

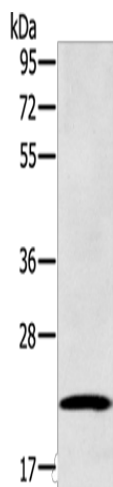
| | |
|--------------------------------|--|
| Product Type: | Primary Antibodies |
| Applications: | IHC, WB |
| Recommended Dilution: | WB: 200-1000 WB positive control: Human fetal brain tissue IHC: 50-200 Positive control: Human thyroid cancer Predicted cell location: Cytoplasm |
| Reactivity: | Human, Mouse |
| Host: | Rabbit |
| Isotype: | IgG |
| Clonality: | Polyclonal |
| Immunogen: | Synthetic peptide of human RAB39B |
| Formulation: | pH7.4 PBS, 0.05% NaN ₃ , 40% Glycerol |
| Concentration: | lot specific |
| Purification: | Antigen affinity purification |
| Conjugation: | Unconjugated |
| Storage: | Store at -20°C as received. |
| Stability: | Stable for 12 months from date of receipt. |
| Predicted Protein Size: | 25 kDa |
| Gene Name: | RAB39B, member RAS oncogene family |
| Database Link: | NP_741995 Entrez Gene 67790 Mouse Entrez Gene 116442 Human Q96DA2 |
| Background: | This gene encodes a member of the Rab family of proteins. Rab proteins are small GTPases that are involved in vesicular trafficking. Mutations in this gene are associated with X-linked mental retardation. |
| Synonyms: | MRX72; WSMN |



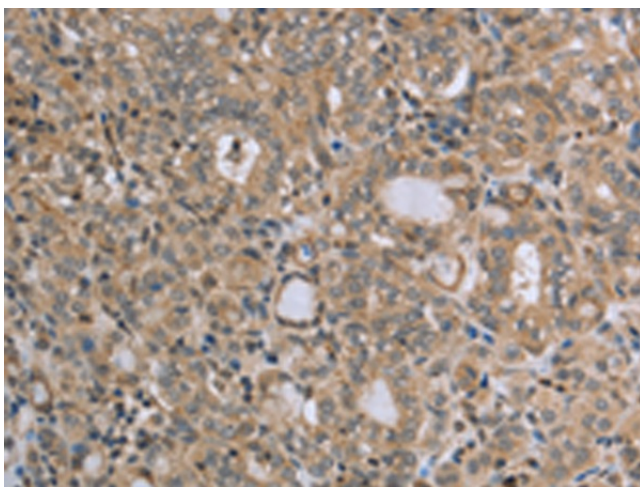
[View online »](#)

Protein Families: Druggable Genome

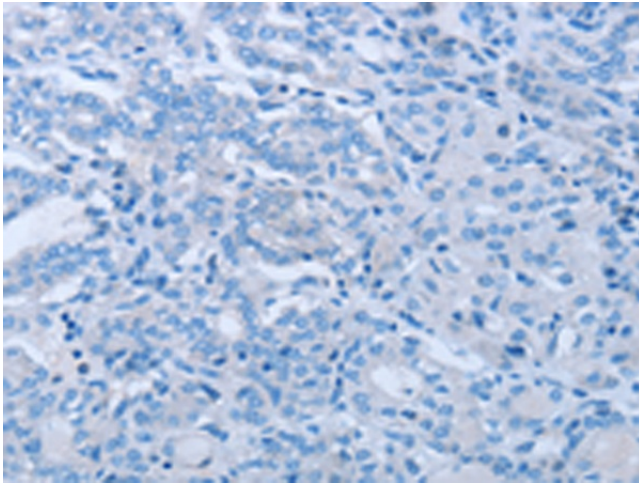
Product images:



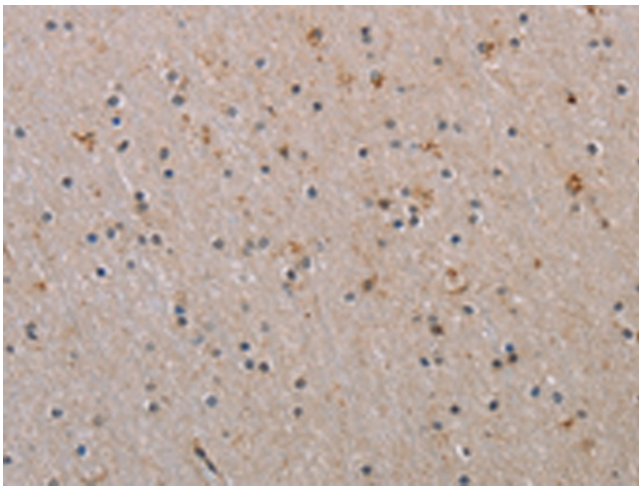
Gel: 8%SDS-PAGE
Lysate: 40 μ g
Lane: Human fetal brain tissue
Primary antibody: TA351442 (RAB39B Antibody)
at dilution 1/400
Secondary antibody: Goat anti rabbit IgG at
1/8000 dilution
Exposure time: 3 minutes



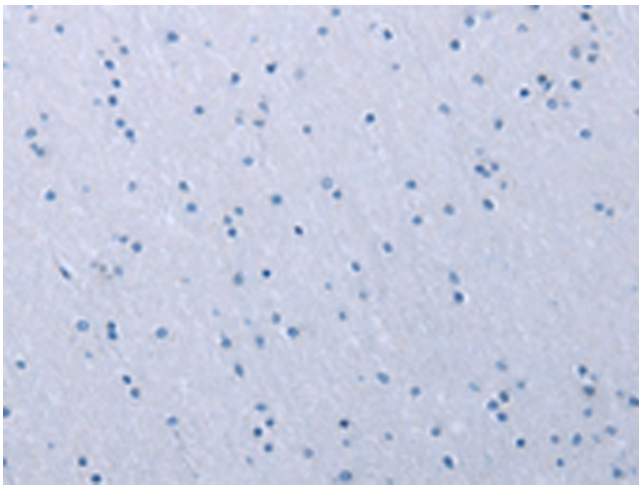
Immunohistochemistry of paraffin-embedded
Human thyroid cancer tissue using TA351442
(RAB39B Antibody) at dilution 1/45 (Original
magnification: $\times 200$)



Immunohistochemistry of paraffin-embedded Human thyroid cancer tissue using TA351442 (RAB39B Antibody) at dilution 1/45, treated with synthetic peptide. (Original magnification: ×200)



Immunohistochemistry of paraffin-embedded Human brain tissue using TA351442 (RAB39B Antibody) at dilution 1/45 (Original magnification: ×200)



Immunohistochemistry of paraffin-embedded Human brain tissue using TA351442 (RAB39B Antibody) at dilution 1/45, treated with synthetic peptide. (Original magnification: ×200)